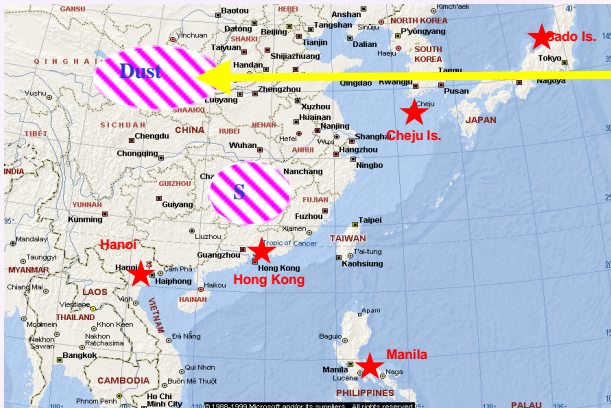


IBA Aerosol Characterisation in Asia

Key Question:

- How do the spatial and temporal variations in the components of Asian aerosols affect climate forcing?



Map showing the site where aerosol samples were taken.



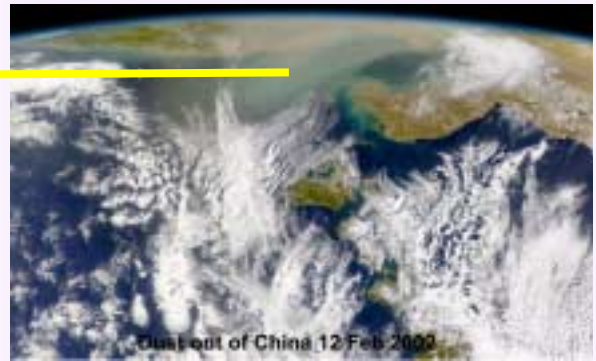
ANSTO fine particle samplers in Hong Kong.



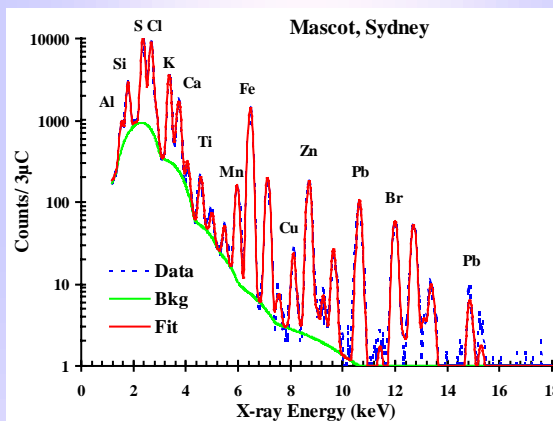
Clean and exposed filters.

Method:

- IBA has been used to characterise the natural and anthropogenic sources of fine particles found across eastern Asia.

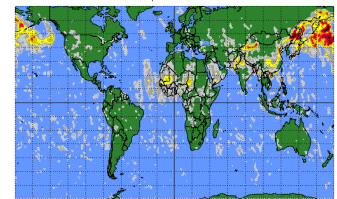


Satellite image of dust coming out of China

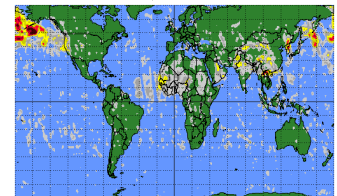


PIXE spectrum of aerosol sample revealing the trace elements present

Earth Probe TOMS Aerosol Index on April 11, 2001

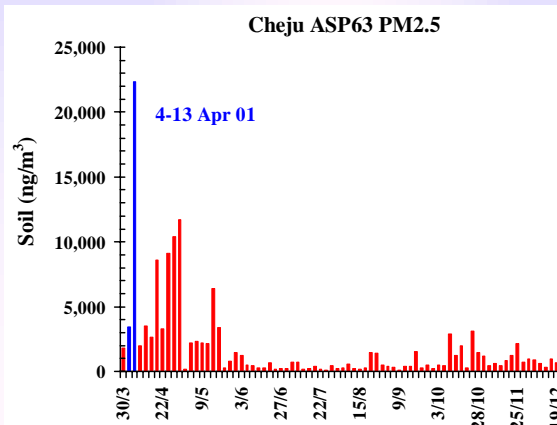


Earth Probe TOMS Aerosol Index on April 12, 2001

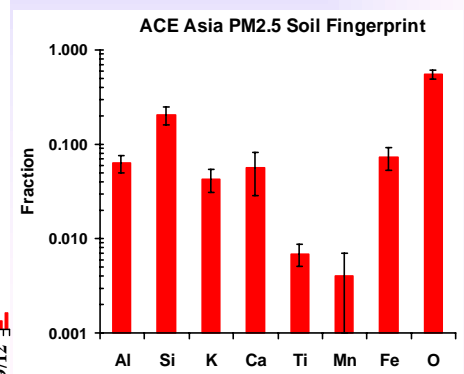


Goddard Space Flight Center

NASA measurements showing the dust event of 11 April 01 circling the globe.



Elemental and correlation analysis shows source to be mainly soil



Average soil fingerprint for all five ACE Asia sites

Aerosol Characterisation Experiment in Asia (ACE-Asia)