

Quokka user manual

This guide is not intended to replace your local contact, but to jog your memory if you are operating independently. Anything strange, call your local contact...

Numbers for Quokka instrument scientists:

Elliot Gilbert, office – 9470, mobile – 04 09 03 43 05

Katy Wood, office – 7100, mobile – 04 17 47 35 37

Chris Garvey, office – 9328, mobile – 04 09 22 58 81

An image of the quokka detector is visible from outside ansto at the following webpage:

<http://www.nbi.ansto.gov.au/quokka/>

Reactor status and cold source temperature visible at (do not leave this webpage open for long periods of time):

<http://prism.nbi.ansto.gov.au/reactor/ReactorInfo.swf>

Other useful numbers:

Emergencies – SOSS: 888

SOSS (not emergency, working alone form etc...): 3434

Health Physics: 9779

IT helpdesk: 9200

Feedback on the manual: kwo@ansto.gov.au

1. PERFORMING AN EXPERIMENT	3
1.1. LOGIN TO DATA ACQUISITION COMPUTER	3
1.2. START GUMTREE	3
1.3. STARTING A STANDARD EXPERIMENT	3
1.4. STARTING AN EXPERIMENT USING A CONTROLLED ENVIRONMENT / RUNNING THE SAME EXPERIMENT MULTIPLE TIMES	10
1.5. SAVING RUN NUMBERS TABLE FOR LOG BOOK.	12
1.6. SAVING REPORT FILE DURING EXPERIMENT.	12
1.7. WHERE IS THE DATA?	12
1.8. IS MY EXPERIMENT RUNNING OK?	12
1.9. COMMON ISSUES	13
I HAVE STARTED A WORKFLOW, BUT WOULD LIKE TO STOP IT.	13
I HAVE STARTED A WORKFLOW, BUT WOULD LIKE TO PAUSE IT.	13
1.10. 'ON THE FLY' DATA INSPECTION WITH IGOR	13
1.11. BEFORE YOU LEAVE	17
2. INSTALLING DATA REDUCTION MACROS ON YOUR OWN COMPUTER	17
2.1. INSTALL IGOR	17
2.2. REMOVE ANY OLDER VERSIONS OF THE MACROS.	17
2.3. INSTALL QUOKKA SPECIFIC MACROS	18
2.4. SWITCH TO NIST MACROS	19
3. QUICK GUIDE TO QUOKKA DATA REDUCTION	20
3.1. LOGIN TO THE ANSTO NETWORK PC	20
3.2. TRANSFER DATA AND REPORT FILES	20
3.3. GET THE SENSITIVITY AND MASK FILES	20
3.4. OPEN IGOR MACROS	20
3.5. SELECT WORKING DIRECTORY	21
3.6. PATCH THE DATA	21
WRITE CORRECT λ AND $\Delta\lambda/\lambda$ TO ALL FILES	21
DETERMINE BEAM CENTRES FOR EACH CONFIGURATION AND WRITE TO FILE	22
3.7. CALCULATING TRANSMISSIONS.	23
READ THE REPORT FILE & CREATE TABLE	23

3.8. REDUCE DATA**1. Performing an experiment**

Your local contact will train you in how to enter the enclosure and load samples. Before you do this independently you must sign the training form to acknowledge you have received the training. The following describes how to run the acquisition software.

1.1. Login to data acquisition computer

Login and password will be given to you by your local contact

1.2. Start gumtree

Currently version 1.5.7, link on desktop

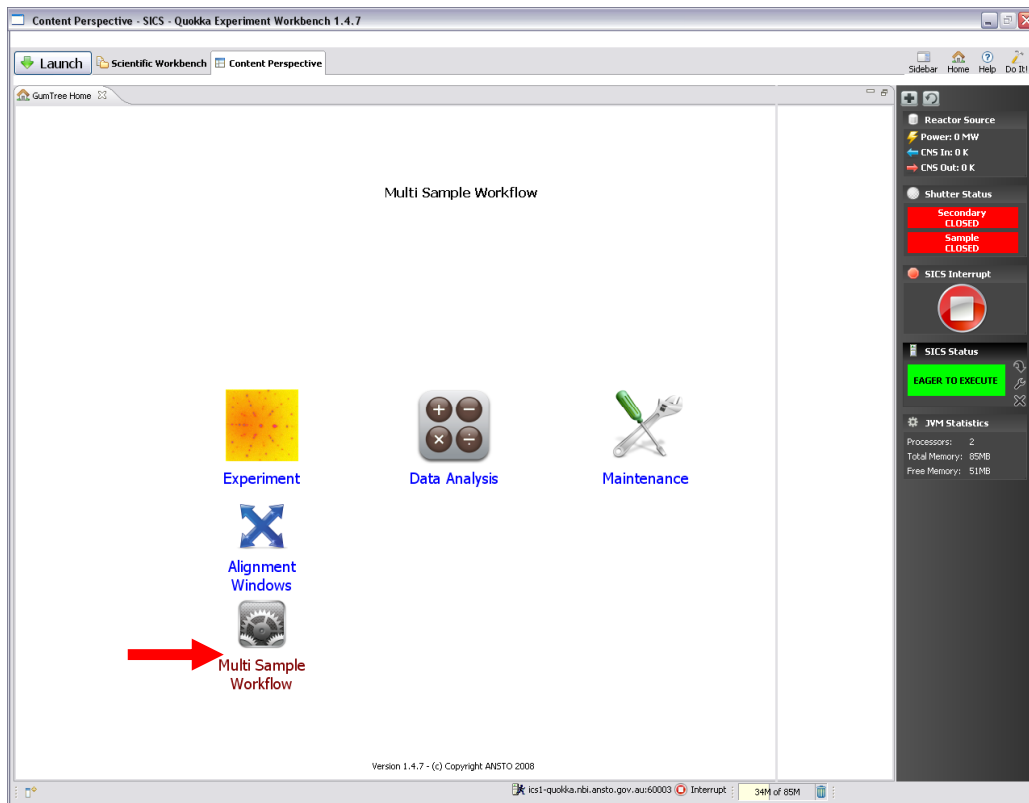
Login and password will be given to you by your local contact

(Normally this would already be open. Caution – opening gumtree takes some time).

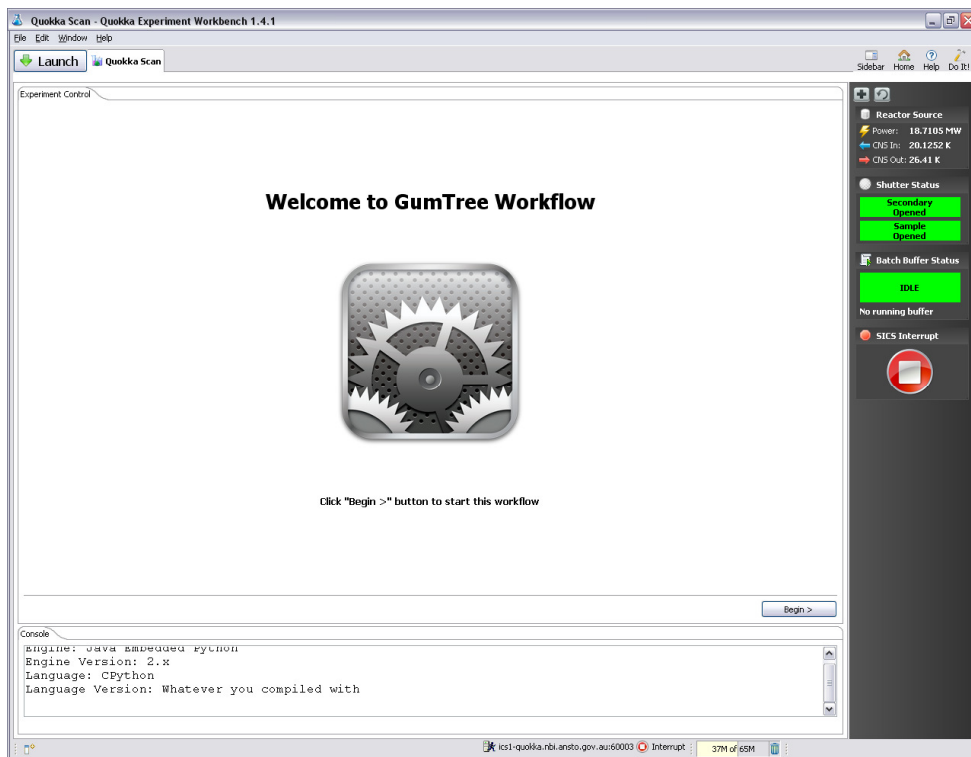
1.3. Starting a standard experiment

Below describes starting an experiment with the 20 position sample changer at ambient temperature.

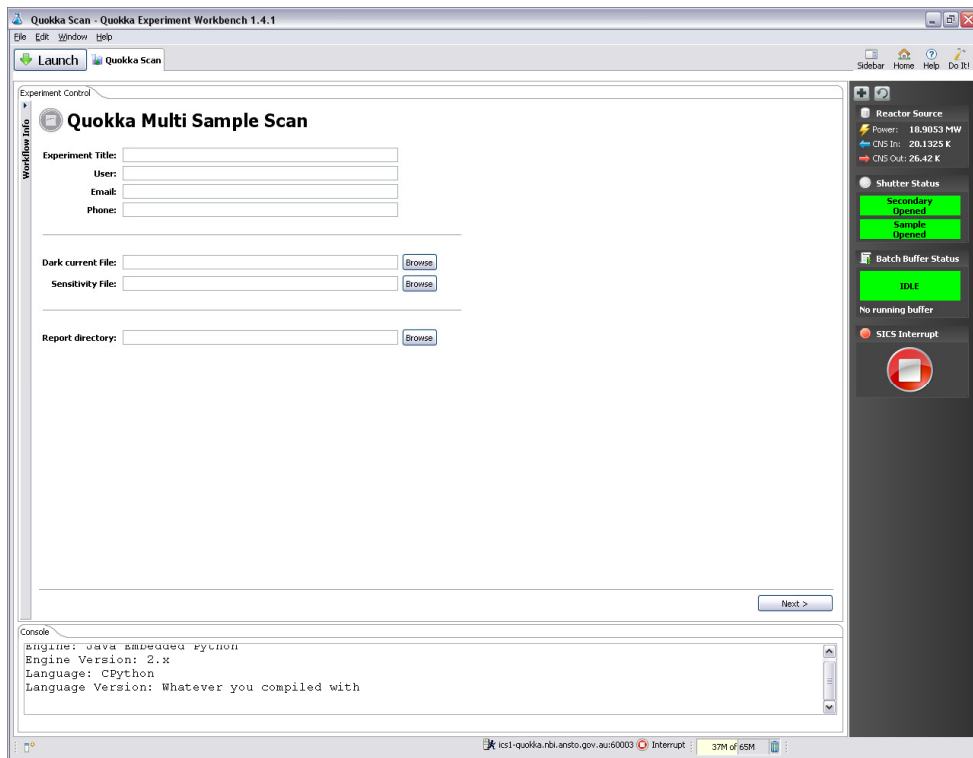
1. Select 'multi-sample workflow':



The following then appears (may take some time).



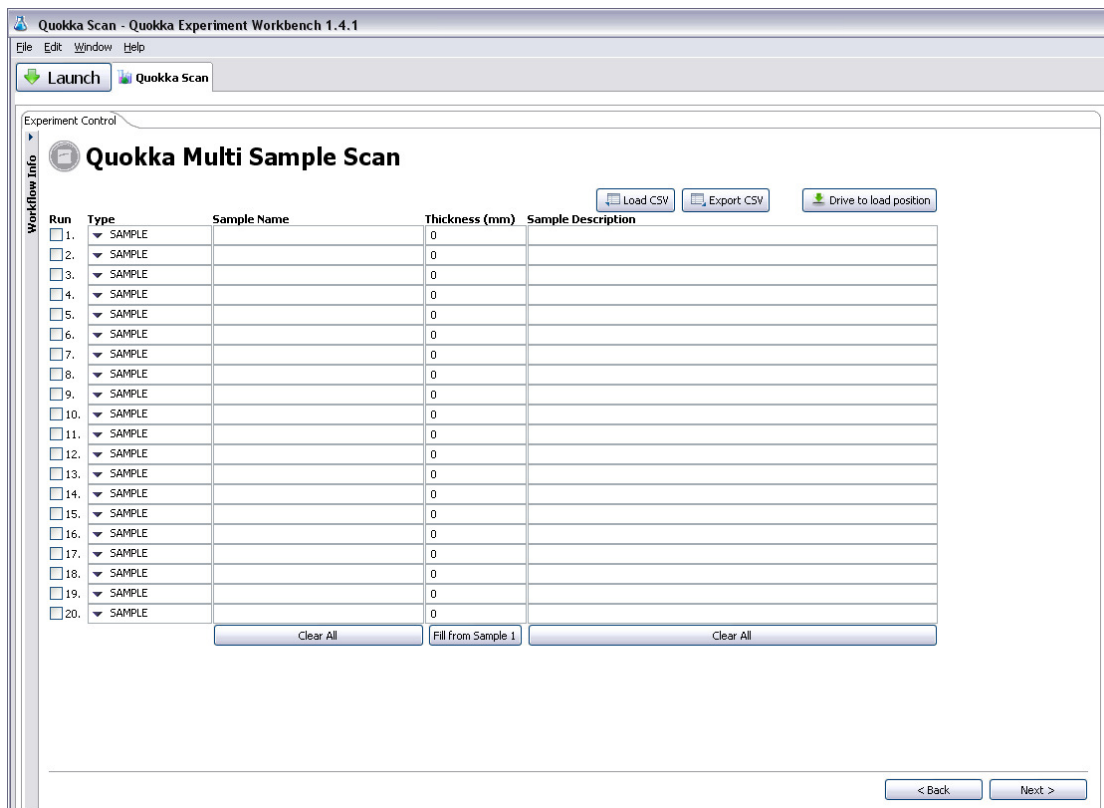
Click begin to start workflow.



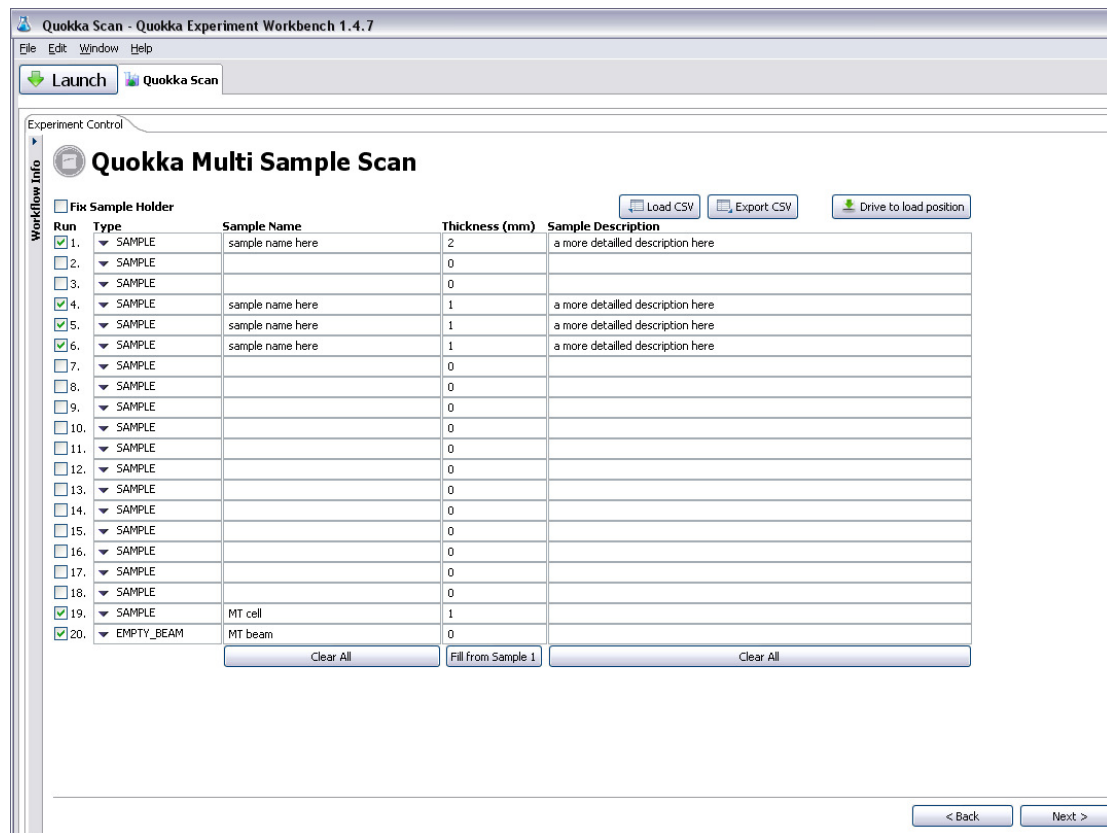
Fill in first four boxes with appropriate details.

Ignore next three for now, then click 'next'.

2. Insert sample details



The 'drive to load position' button allows you to move the sample changer in the enclosure to a position where you can easily load your samples. Once in this position insert your sample blocks into the changer.



Tick the boxes corresponding to where you have put samples, and enter sample name, thickness and description.

In the 'type' pull down menu you can select either 'SAMPLE', 'EMPTY_BEAM'. It's best to treat your empty cell measurement as a 'SAMPLE'. Making sure you have made the right selection simplifies data processing.

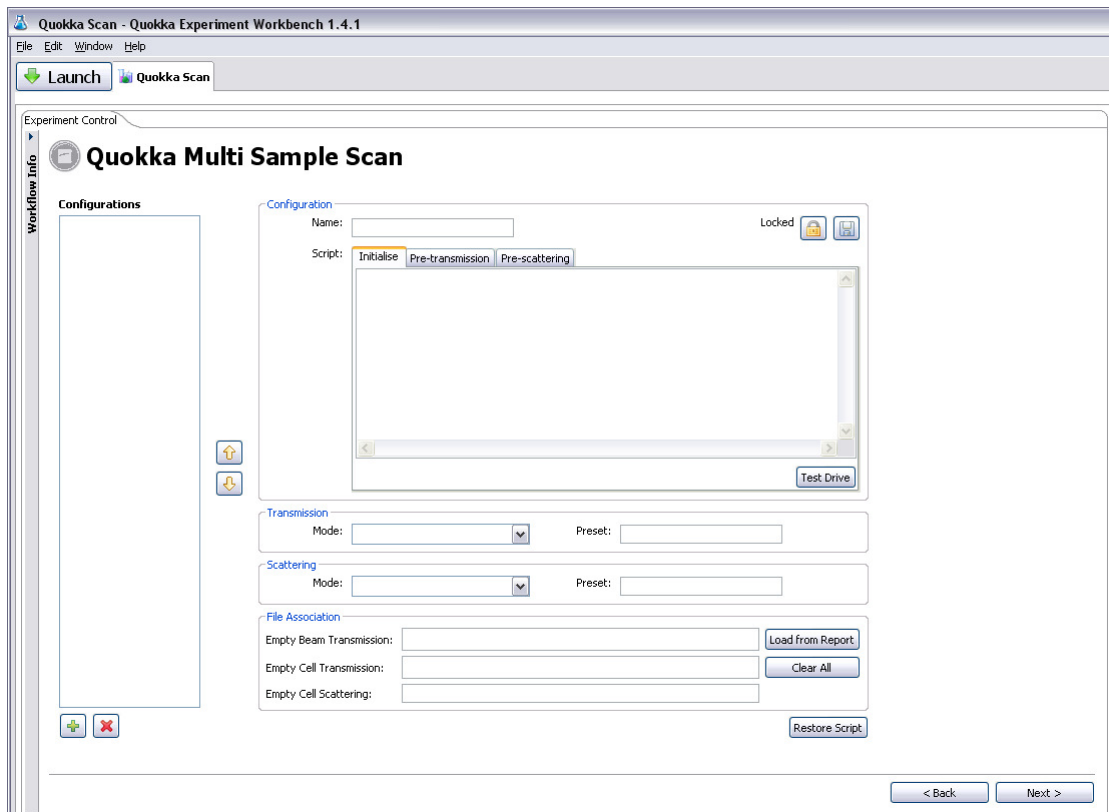
Positions 19 and 20 on the sample changer are generally left with the empty cell and empty beam, respectively.

'Export CSV' allows you to save a file with all sample names, thickness etc.. in the different positions. This can then be re-loaded at a later stage if you will be using similar sample names with the 'Load CSV' button.

The 'Clear All' and 'Fill from Sample 1' buttons are self-explanatory...

3. Select configurations

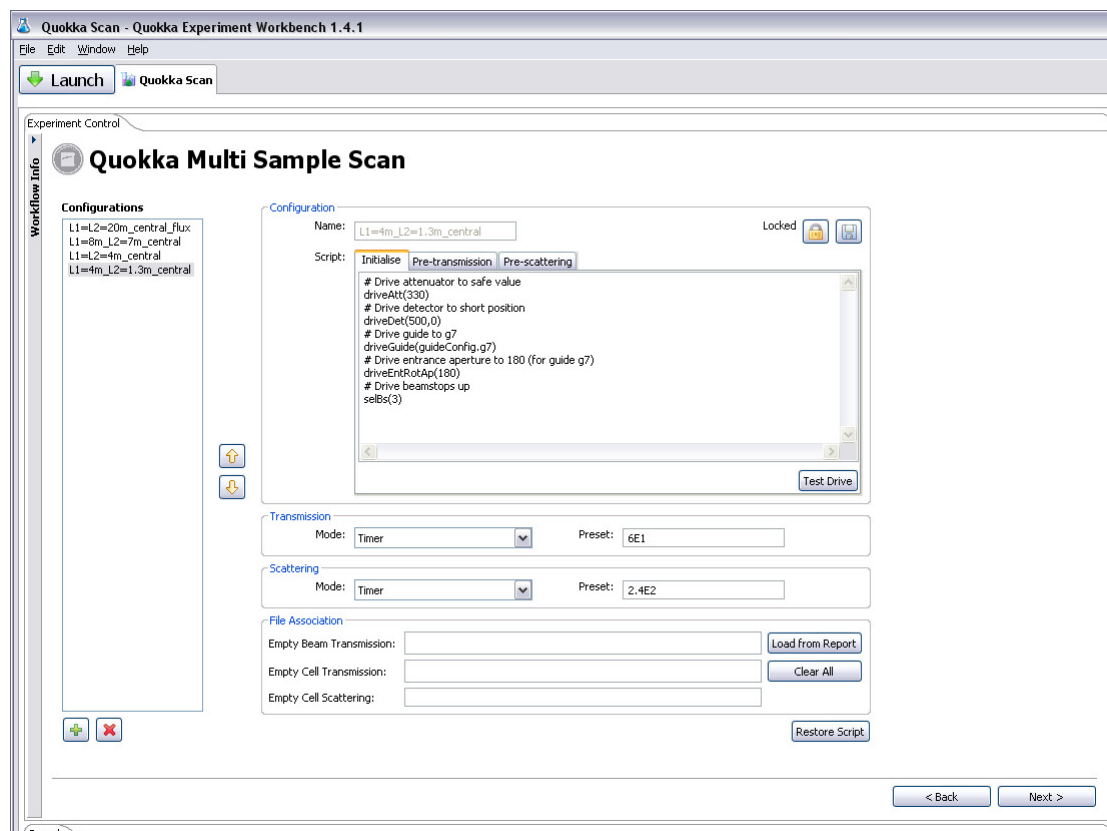
Clicking the 'next' button brings up the following screen, where you can select your configurations:



Clicking the small green plus sign under 'Configurations' brings up the following:



Click on a configuration to select it, then 'OK'. Your local contact will discuss suitable instrument configurations with you prior to commencing the experiment.



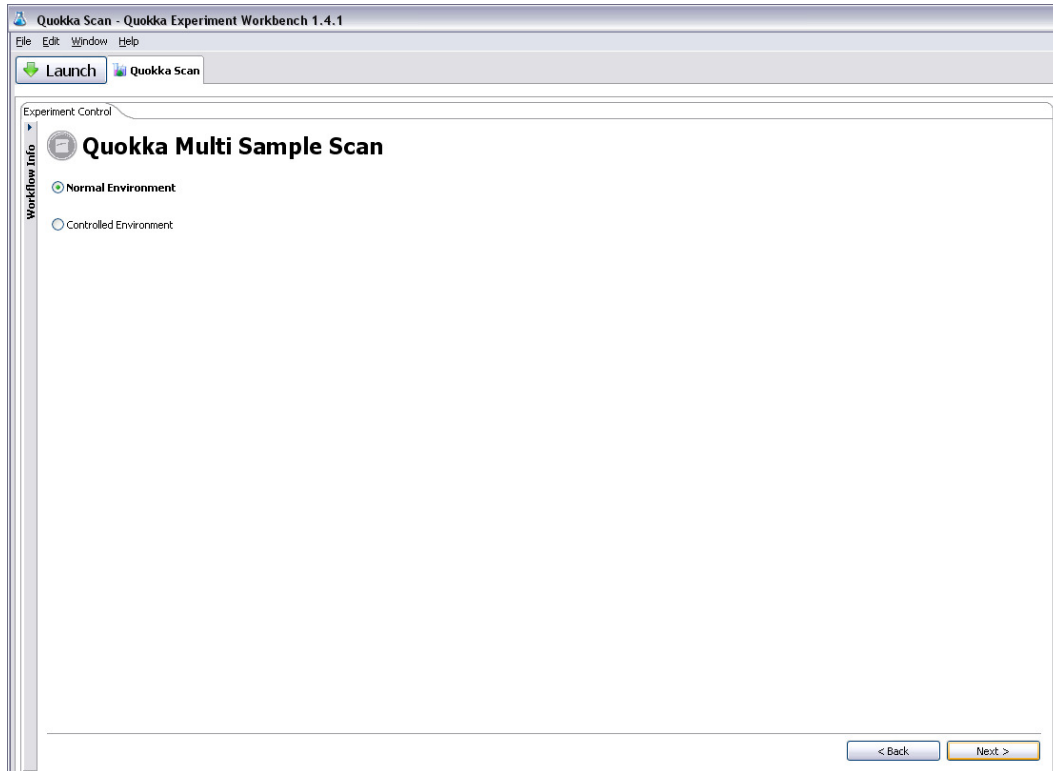
Several configurations can be selected in this way. Red cross to delete any you have added by mistake. Do not modify any configurations, only your local contact should do this.

In the 'transmission' and 'scattering' boxes you enter the time the samples will be measured for. (If you would like to measure different samples for different amounts of time, you can change these values for individual samples later – only for the 'scattering' runs, not the transmissions). If you chose the 'timer' mode, enter the time you choose in seconds. In 'Counter' mode, it will count to monitor and you should enter a monitor count rate. A table is given on the right of the computer with monitor counts, seconds etc...

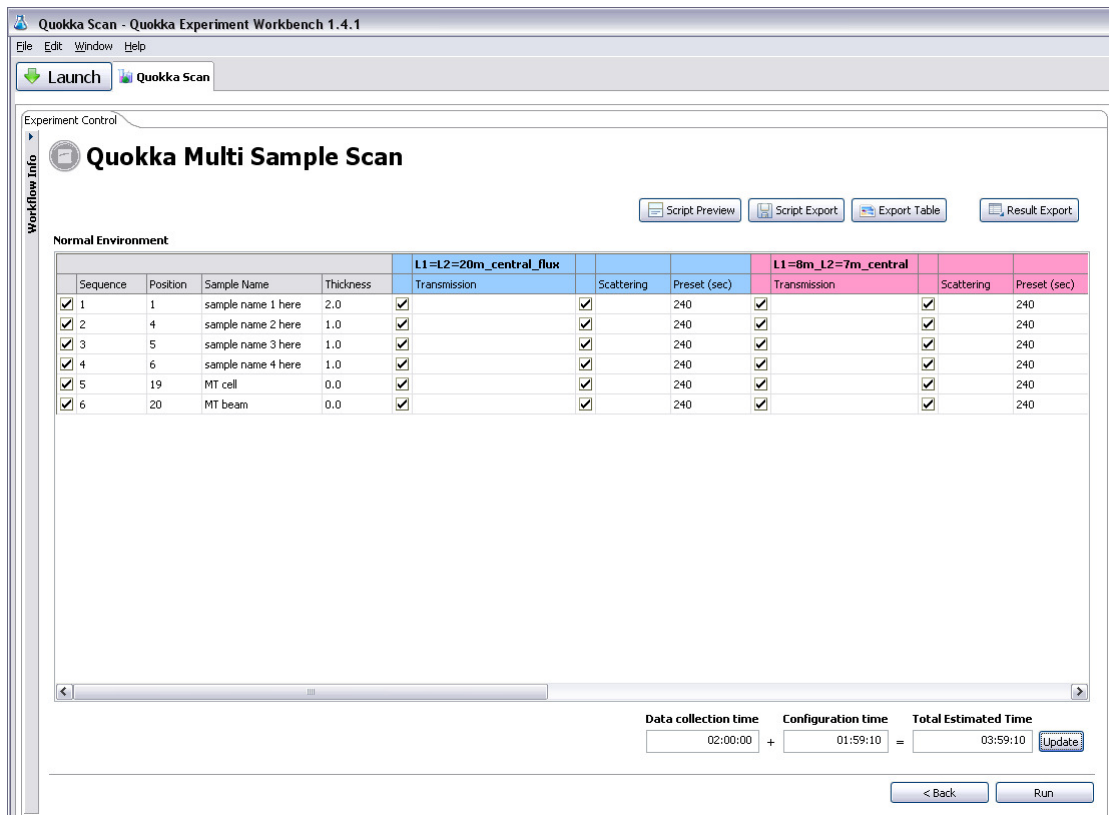
Enter counting times in all the different configurations.

4. Select environment

Once you are happy with configurations and counting times, 'next' brings up the following:



'Normal' environment is left selected if running with the 20 position sample changer at ambient temperatures. Select 'next'.



A table now appears with your samples and configurations. (Scroll across to see all). If you do not wish to measure all samples at all configurations, you can uncheck the appropriate boxes. If you wish to do absolute normalisation, always leave a transmission measurement of the empty

beam as we use this. At this point the 'preset' column can be modified if you wish to count for different times. You do not need to measure the scattering from the empty camera (position 20) unless you are using this as a background (i.e. not using cuvette, solvent etc.).

Underneath the table an estimated experimental time is given. If you change individual run times 'Update' will update this. If the runtime looks very long, you've probably made an error and selected to count to monitor counts but accidentally left the option selected as 'time'.

Clicking 'run' then starts the run you have setup. If you have not opened the shutter, you will see a prompt 'shutter not open'. Check it's open and then 'OK' to start your run!

1.4. Starting an experiment using a controlled environment / running the same experiment multiple times

As per 1.3 except that at step 4 'select environment', select 'Controlled environment'.

Using the "Controlled Environment" option, you may then select a list of sample environment controllers for your experiment.

Select dummy_motor if you would like to run the same series of samples multiple times.

Experiment Control

Quokka Multi Sample Scan

Normal Environment

Controlled Environment

Controller

dummy_motor

+ -

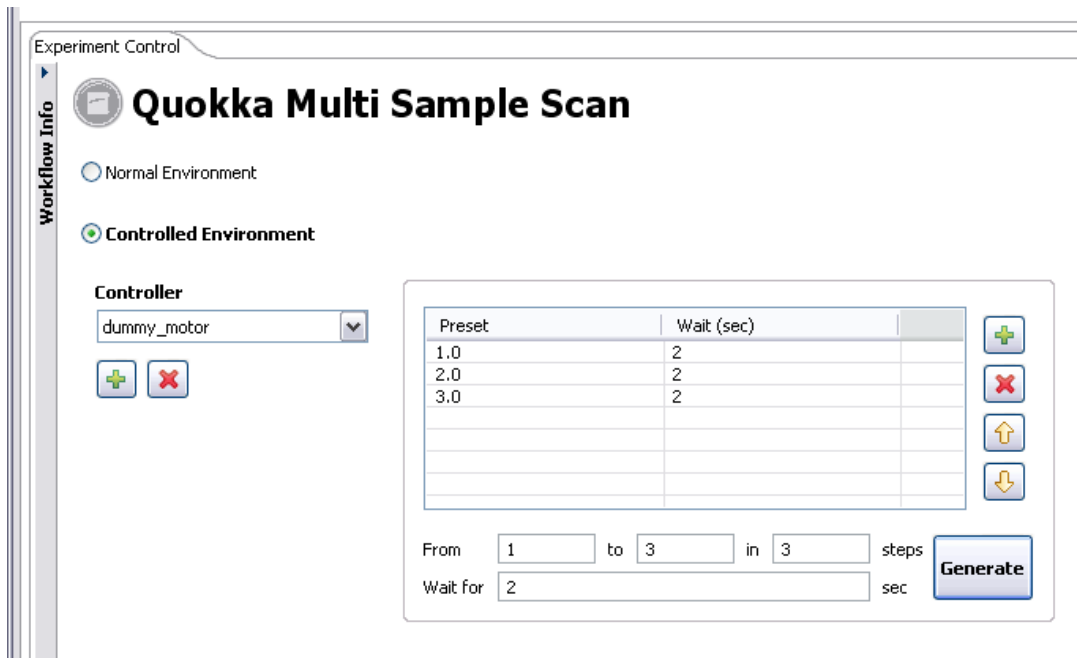
Preset	Wait (sec)

From 1 to 3 in 3 steps

Wait for 2 sec

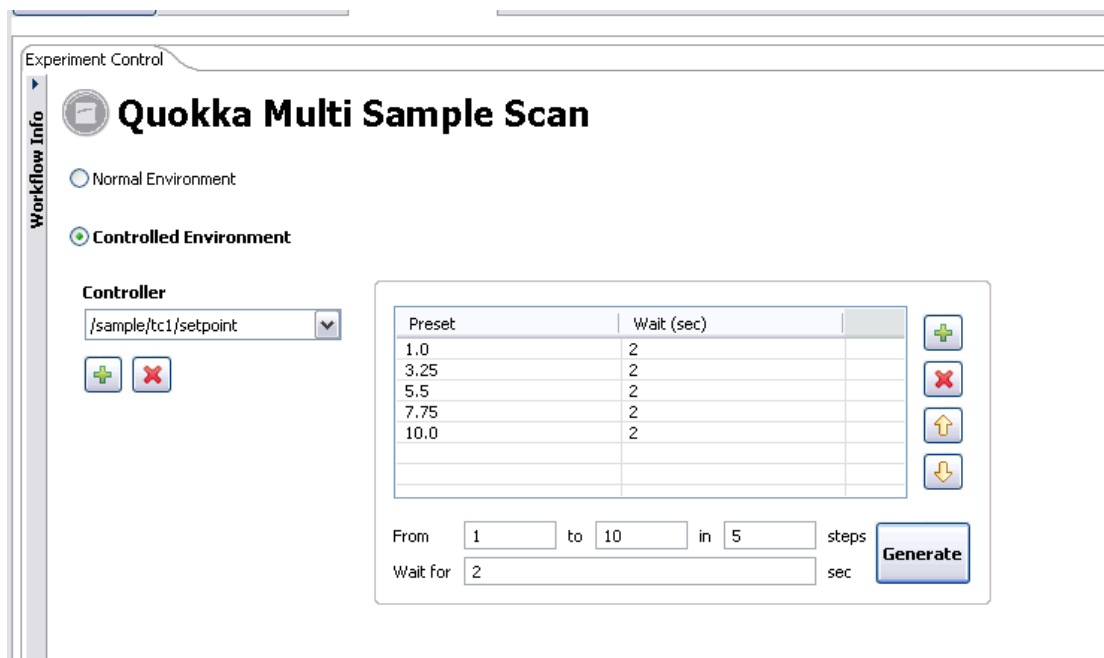
Generate

In the example above, 3 steps will be generated on clicking on the 'generate' button, and the table will be updated as follows:



It is then possible to run the samples and configurations selected previously three times with a 2 second wait between each.

Select /sample/tc1/setpoint to use temperature control (needs to be correctly set up first by your local contact).



To enter the preset values for the controller, type the numbers into the text boxes and press "Generate". In the example above, the samples will be measured at 5 different temperatures, between 1 to 10 degrees. Insert a small wait in seconds at the beginning of each step.

You may modify the preset values from the table if you do not wish to use the fixed step presets generated by GumTree. The multi sample workflow can support multiple sample environment controllers in an experiment. You can press "+" button under the controller to add more. Each

additional controller simply adds a one more nested loop to your experiment sequence.

1.5. Saving run numbers table for log book.

As data is saved the run numbers appear in the table. It's then particularly useful to save this table with 'export table'. This button exports the table as a jpeg file, which can then be printed. Note that you only export what is visible on the screen. (If you wish to save all configurations you will have to scroll to the right).

1.6. Saving report file during experiment.

At the end of a multi sample workflow, a 'report' file is created. This file contains all the associations for the different configurations (which run numbers are scattering files, which are transmissions, empty beam etc...), and simplifies data reduction. If you'd like to treat your data before the end, you can create a report file by hitting 'Result Export'. If you want to stop a multi-sample workflow early for some reason, make sure you 'Result Export' first, as this is not done automatically.

1.7. Where is the data?

Data files are written and updated every minute in the directory in /experiments/quokka/data/current. This directory is read only.

Report files are in /experiments/quokka/data/current/reports

A read/write copy of the data is also copied to the directory named after the proposal number: /experiments/quokka/data/proposal/xxx. This data can be patched etc... and used to do data reduction (see section 3). It is updated approximately every 4 minutes.

At the end of the cycle the read only copy of the data and report files will be moved into a directory named after the cycle number, eg. /experiments/quokka/data/cycle/030

Links to these directories can be found on the desktop.

1.8. Is my experiment running OK?

- As the workflow moves through your run, messages will be displayed at the bottom in the 'console' indicating progress. Any errors will appear in red.

- Approximate counts/rates on 'standard' samples. A table is given in the log book with approximate count rates for some standard configurations measured on H₂O, D₂O samples. You should have similar values.

- Instrument dashboard: The dashboard displays a 2D image of the detector, most instrument settings and parameters such as L1 and L2. Do not modify anything from this dashboard.

1.9. Common issues

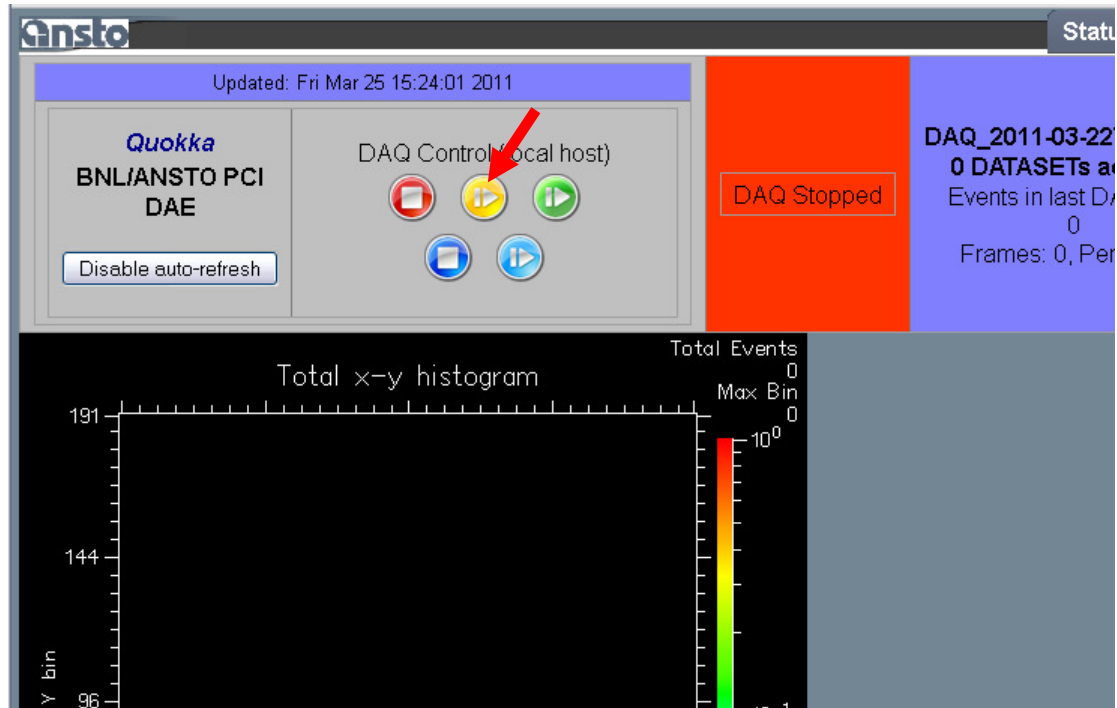
I have started a workflow, but would like to stop it.

Click on the any of the 'Interrupt buttons'. A report file will be saved.



Multisample work flow will then go into 'cleanup mode', ie will drive the attenuation to a high value, protecting the detector from any possible over-exposure. By using the 'back' buttons, you can then modify the run and restart.

I have started a workflow, but would like to pause it.

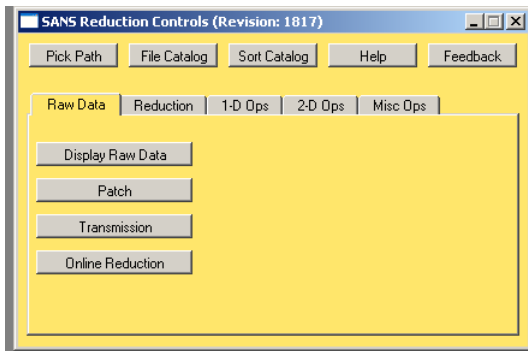


The workflow can be paused if the acquisition is running in the monitor mode. Firstly, open up the histogram memory website on <http://das1-quokka.nbi.ansto.gov.au:8080/admin/viewdata.cgi>, (book-marked in firefox) and press the **yellow** button to pause the system. You can press on the same button to resume from a paused acquisition.

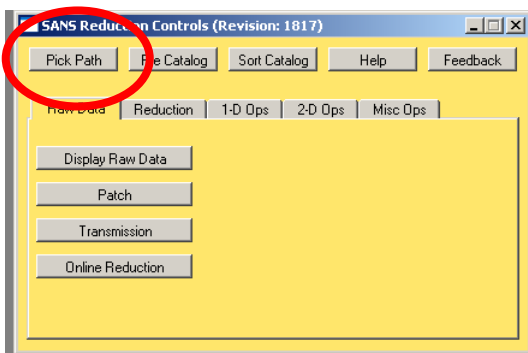
1.10. 'On the fly' data inspection with Igor

It is now possible to look at data during collection, before the file is complete. Following the procedure below allows you to open the file and inspect the radial average, which will automatically be updated approximately every minute.

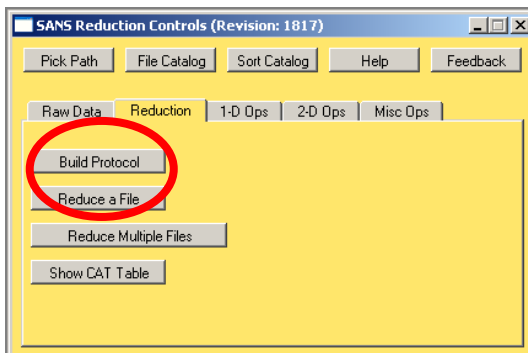
1. Open "Igor with Quokka macros", and in the macros menu select 'Load Quokka Sans Reduction Macros'. Following yellow panel appears.



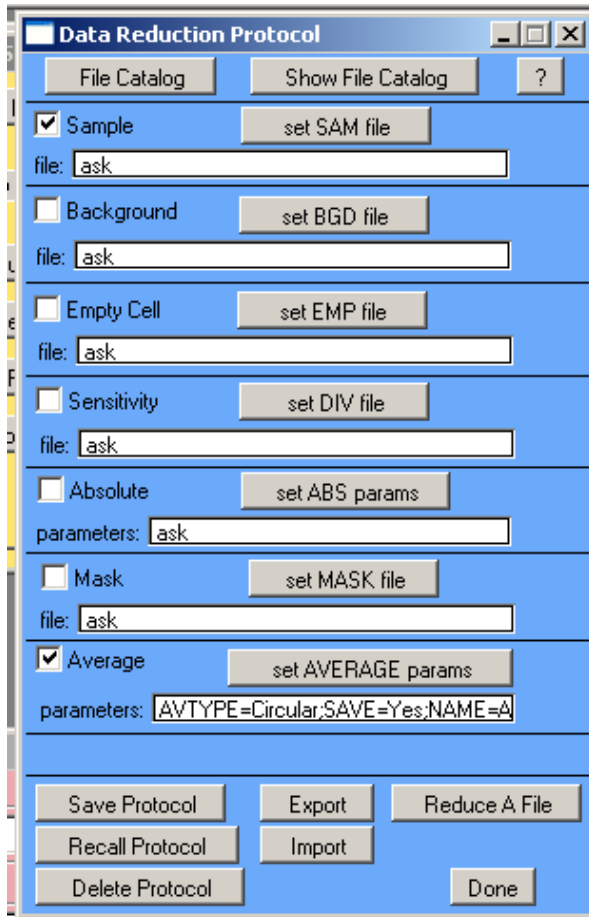
2. Click on 'Pick Path' and navigate to /experiments/quokka/data/proposal/xxx



3. In the 'Reduction' tab 'Build protocol'.

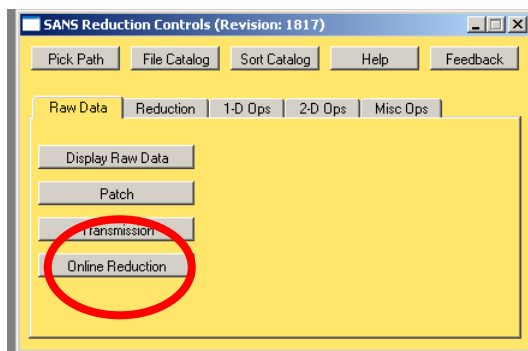


Following appears:

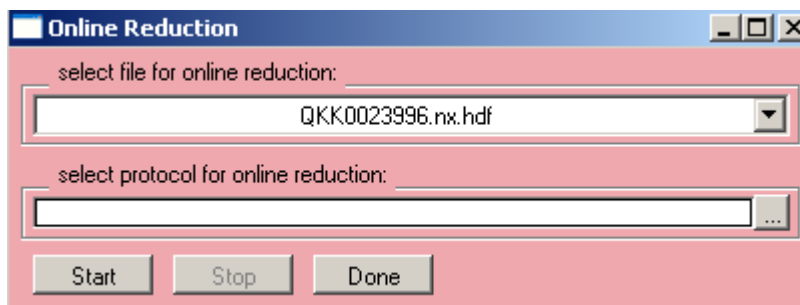


Uncheck all except Sample and Average and 'Save protocol'. Choose a name eg 'on_line'.

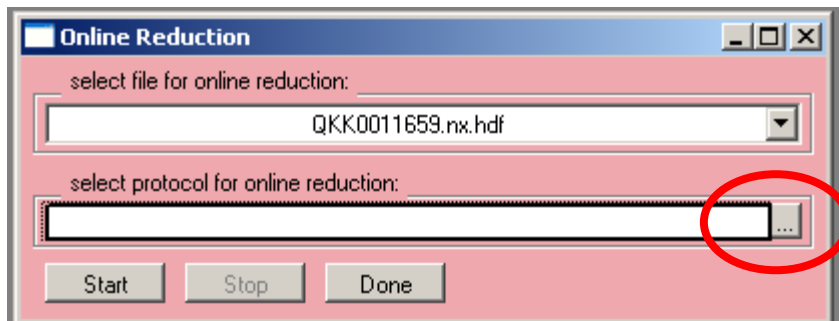
4. Select 'Online Reduction' on the 'Raw Data' tab



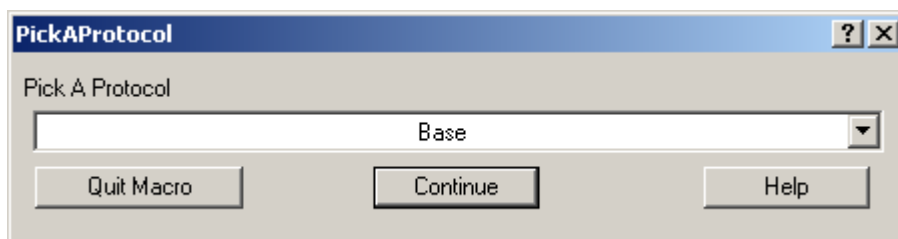
Following appears:



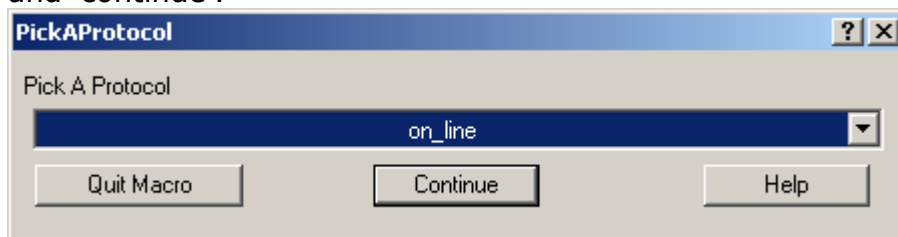
Select the file you would like in top drop down menu.
In the second window click `...`,



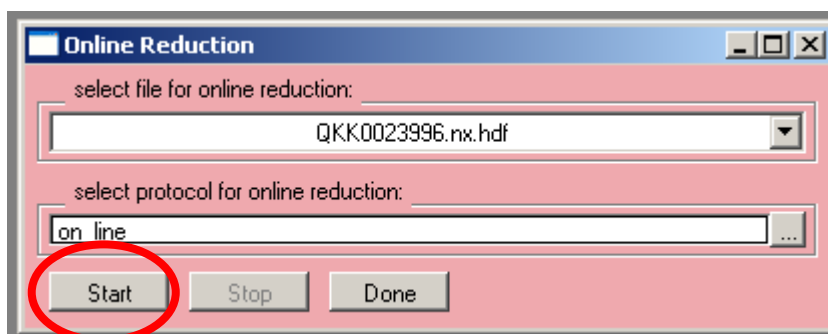
following appears:



Select the protocol you have just built in the drop down menu, eg `on_line` and `continue`.



Then click `start` on the pink `Online Reduction panel`.



The radial average data will then be displayed and automatically updated.

1.11. Before you leave

Before you leave the instrument, please:

- Clean and return your sample holders. Instructions in the 'instructions' section of the manual in the cabin. We will not lend sample holders to users who have a history of not returning them clean.
- Photocopy/scan the relevant pages of the logbook.
- Take all raw and treated data either using a thumb drive, by burning the data to a CD/DVD (ask your local contact nicely) or using ANSTO sharefile (web-based system) at sharefile.ansto.gov.au.

2. Installing data reduction macros on your own computer

Note: Any data publication with quokka data reduced with the NIST macros should cite: Kline SR (2006) Reduction and analysis of SANS and USANS data using IGOR Pro. *Journal of Applied Crystallography* **39**: 895-900

2.1. Install Igor

If you don't already have it... A free 30 day demo version can be downloaded from the wavemetrics website. You need Igor version 6.2 or later.

2.2. Remove any older versions of the macros.

Skip this step if you've never had any of the NIST or Quokka macros installed. If you've had any older versions of the NIST or Quokka analysis macros installed, it's important to remove completely/rename folder so there will be no conflicts. You will only have to do this once, as the future updates will be done automatically as long as you are connected to the internet.

! Caution – once you have installed the newer versions of the macros, you will not be able to load any Igor project files made with the older ones. This means you should save all the treated asquii files you are likely to need before installing a newer version of the software.

1) Delete any old NIST and Quokka macros from the following directories (or move all macros elsewhere if you'd like to keep older versions of the macros):

- C:\Program Files\WaveMetrics\Igor Pro Folder\User Procedures
- C:\Documents and Settings\user_name\My Documents\WaveMetrics\Igor Pro 6 User Files\User Procedures
- C:\Documents and Settings\user_name\My Documents\WaveMetrics\Igor Pro 6 User Files\Igor Procedures

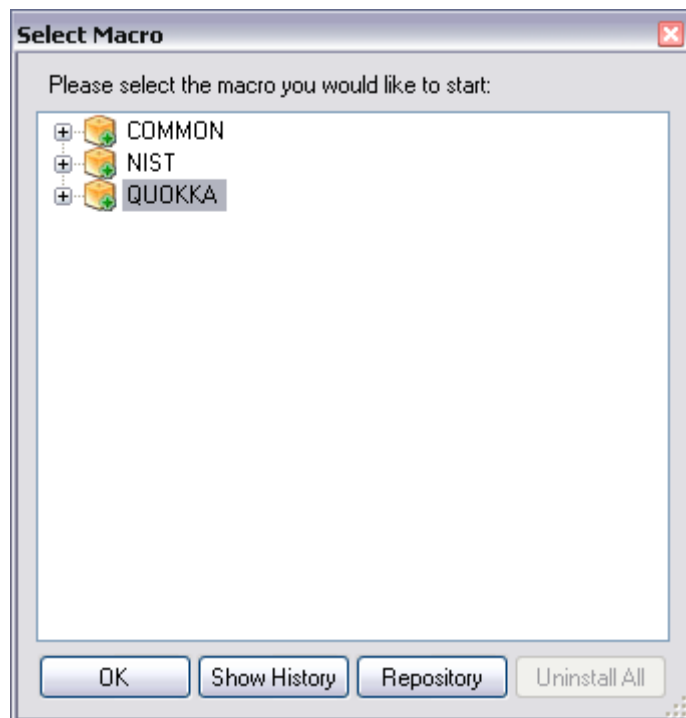
2) Delete the two shortcuts to HDF5.xop and HDF5 Browser.ipf in:
C:\Program Files\WaveMetrics\Igor Pro Folder\Igor Extensions

2.3. Install Quokka specific macros

Navigate to:

<http://www.nbi.ansto.gov.au/quokka/macros/IgorUserFilesSwitch.exe>

and download the executable 'IgorUserFilesSwitch.exe'. Double click on the executable.



Select Quokka macros to install and click OK. You will be asked if it is OK to download the macros, select yes.

After installation 'continue' will launch Igor. Ticking the 'continue when done box' will automatically start Igor after you have used the switch.

Once this is done you should have a "Igor with Quokka macros" shortcut either under the Start>Igor menu OR on your desktop (depending on which version of windows you are running).

Once Igor Pro is open, the Macros menu should now contain 'Load QUOKKA SANS Reduction Macros'. Selecting this brings up yellow 'SANS Reduction Controls'.

3. Quick guide to Quokka data reduction

Note: Any data publication with quokka data reduced with the NIST macros should cite: Kline SR (2006) Reduction and analysis of SANS and USANS data using IGOR Pro. *Journal of Applied Crystallography* **39**: 895-900

The following is a 'quick guide' to treating quokka data. More detailed help about the macros is found in the 'help' buttons in Igor.

3.1. Login to the ANSTO network pc

Login to the ANSTO network pc on the left in the cabin, or use your own PC with the Quokka Igor macros installed.

3.2. Transfer data and report files

You can transfer across files from the Quokka data acquisition computer to the computer in the left of the cabin using winscp. Navigate to root then experiments>quokka>data>current. Select files to be transferred, F5 then copies then across. Need all data files + the associated report (in data>current>reports).

3.3. Get the sensitivity and mask files

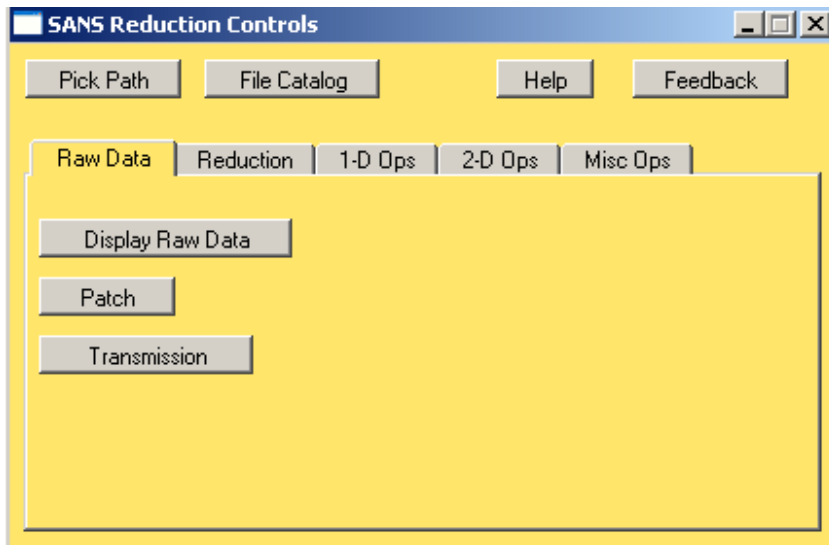
In:

S:\Bragg\Quokka\Sensitivity and standards\

You can then transfer all data files to your own computer if you have installed Igor and the necessary macros, or work on the ANSTO network PC in the cabin.

3.4. Open Igor macros

Open "Igor with Quokka macros", then in the 'Macros' menu select 'Load Quokka data reduction'. You should be able to see the following window:



3.5. Select working directory

On the SANS Reduction controls, 'Pick path' (select path where all your data is), then 'file catalogue'. A table with all data files + characteristics appears, this table takes some time to appear the first time, the small sign on the bottom left of Igor tells you it's working....

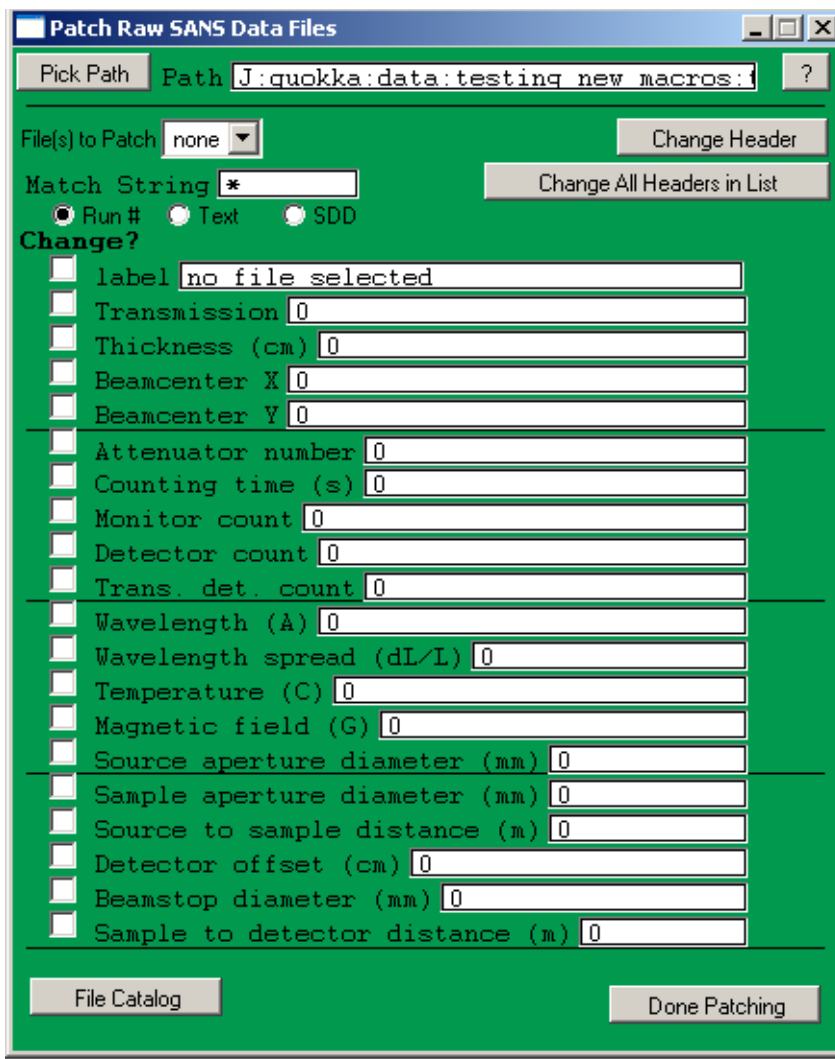


3.6. Patch the data

This step is only necessary on data taken prior to April 2011, later data does not need to be patched, unless advised by your local contact.

Write correct λ and $\Delta\lambda\lambda$ to all files

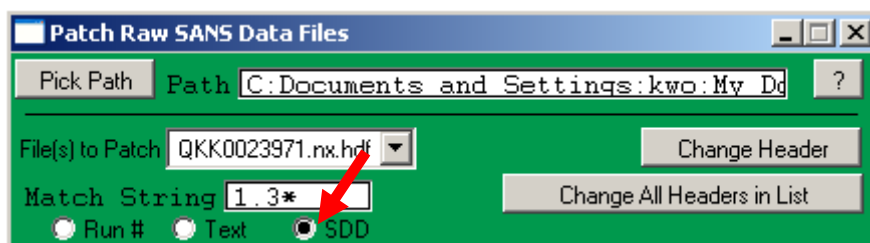
Select 'patch' on the 'raw data' tab. With a * in the 'match string' box, hit enter. The 'files to patch' drop down menu should then be populated with all the files in your working directory.



The wavelength and wavelength spread values have been measured experimentally and should be changed to 5.078 and 0.14, respectively. These values are for data collected on Quokka after October 2010. Enter these number into the 'Wavelength' and 'Wavelength spread' boxes, tick the boxes and click 'Change All Headers in List'.

Determine beam centres for each configuration and write to file

In the green 'patch' window, select the 'SDD' box under 'Match String'.



Enter the SDD distance of the configuration you wish to treat in the 'Match String' box and hit enter. If the SDD=1.31531, writing 1.3* is enough.

The drop down menu under 'Files to patch' should now only contain the files at the specified SDD distance.

Select a transmission file for the first configuration you wish to treat by using the 'Display raw data' in the 'raw data' tab. Select the direct beam using the marquee, right click and 'find beam centre'. The X and Y-centers will be displayed in the Igor 'history' window (ctrl +J will bring this window to the front if it is hidden).

Copy and paste the beam centre values which are displayed in the Igor 'history' window into the 'patch' window. Then 'change all headers in List'. By selecting 'File catalog' again, the table 'Data File Catalog' will be refreshed and the columns Xcenter and Ycenter should be filled.

Repeat this step for the other configurations you wish to treat.

3.7. Calculating transmissions.

Read the report file & create table

Select 'transmission' in the 'raw data' tab. 'pick path' then select the xml report generated by gumtree, then 'List Files'. A table is then created with all the correct file associations.

Calculate transmissions

Select the 'empty beam' transmission file for the first configuration you want to treat by clicking on the appropriate box in the table (should appear in the column 'EMP_Filenames'), and click 'set BCENT file' on the 'calculate transmissions' window (this sets this to beam centre). Click 'Set XY Box' and use the square to select the beam centre. Right click and select 'SetXY box coords'. Then highlight the scattering files in the 'scattering files table' at the configuration for which you've just set the empty beam transmission, and click 'calculate selected files' in the Calculate transmissions window. The S_Transmission column in the 'ScatteringFiles' window should now be populated.

Repeat this step for the other configurations.

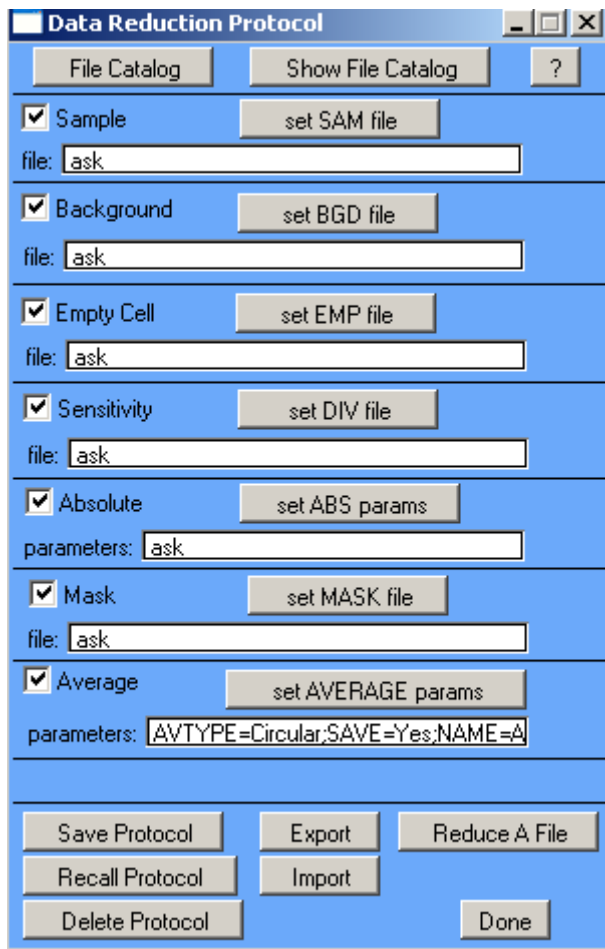
Click 'done' when finished with transmissions'. If you click 'File catalog' the data File catalog window will be updated, and you should be able to see the transmission values. These are 'patched' into the data files.

If your report is incomplete (ie you have stopped a MSW early and the different files are now in different reports) you can easily modify the report by opening it in a text editor.

3.8. Reduce data

This section is not complete, but gives a quick overview. More info is available in the NIST help document.

In the 'reduction tab' choose 'build protocol'. The following appears:



Leaving 'ask' will mean that during the reduction Igor will prompt you to select the file you wish to use:

'Sample' will typically remain 'ask'.

'Background' is a scan of the blocked beam.

'Empty Cell'. If you are always subtracting the same empty cell/buffer run this can be set to the empty file by clicking on the appropriate 'filename' in the 'Data File Catalog' table, then clicking 'set EMP file' (or the filename can be copied and pasted in). (If you are using an empty cell from a previous run, you need to copy the file to the current directory – these will have different beam centres, unless obviously far off warnings about this can be ignored).

'Sensitivity'. Take the sensitivity file in S:\Bragg\Quokka\Sensitivity and standards\

or one given by your local contact. Copy and paste the sensitivity file name or select it in the 'data file catalog', then 'set DIV file' on the data reduction window.

'Absolute' – for absolute scaling. Click 'set ABS params', then select method of absolute calibration 'Empty Beam Flux'. Select the empty beam transmission file, and draw a box around the beam with the cursor, then click 'continue'.

'Mask'. Take the mask file in S:\Bragg\Quokka\Sensitivity and standards\

or one given by your local contact, or make up your own!

'Average' can be left as is for isotropic data.

The data reduction protocol that you've now created can be saved 'Save Protocol'. You can now reduce a file by selecting 'Reduce a file' directly in the blue 'Data Reduction Protocol' panel, or if you have saved the protocol, directly on the yellow 'SANS Reduction Control' panel. Via the 'SANS Reduction Control' panel you can then select the protocol (useful if you want to make multiple protocols).

During the reduction, you'll be prompted to select files to use. Each time Igor asks 'Do you want to add another xxx file'? This is for if you wish to add multiple runs together, if you only have one run, select no.

Reduced data are then saved in the file: QKK00xxx.ABS

To merge several configurations configurations together: 1D Ops, 'sort' button