

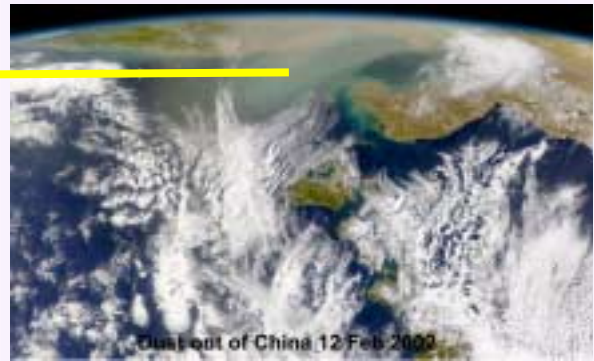
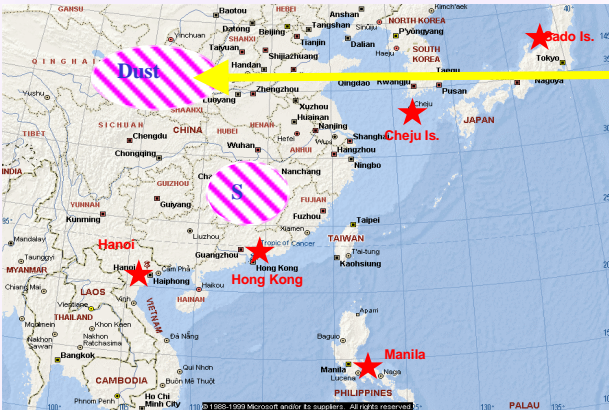
IBA Aerosol Characterisation in Asia

Key Question:

- How do the spatial and temporal variations in the components of Asian aerosols affect climate forcing?

Method:

- IBA has been used to characterise the natural and anthropogenic sources of fine particles found across eastern Asia.

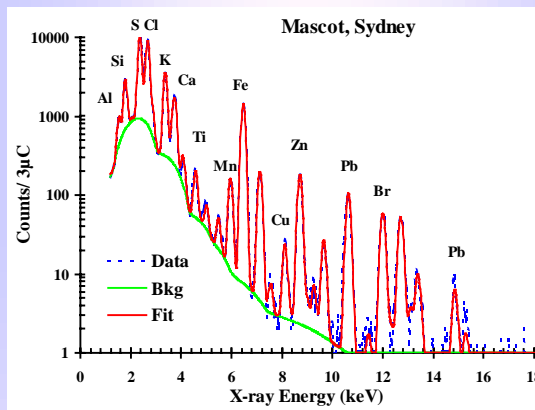


Satellite image of dust coming out of China

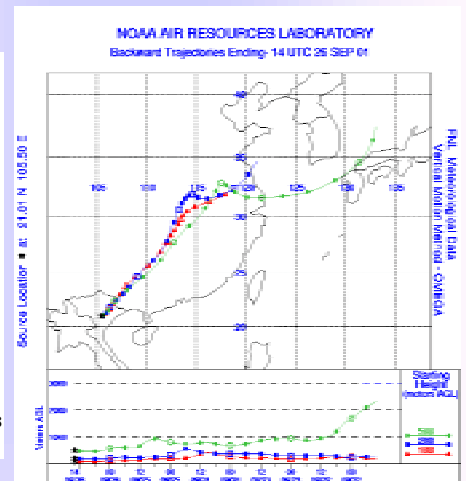
Map showing the site where aerosol samples were taken.



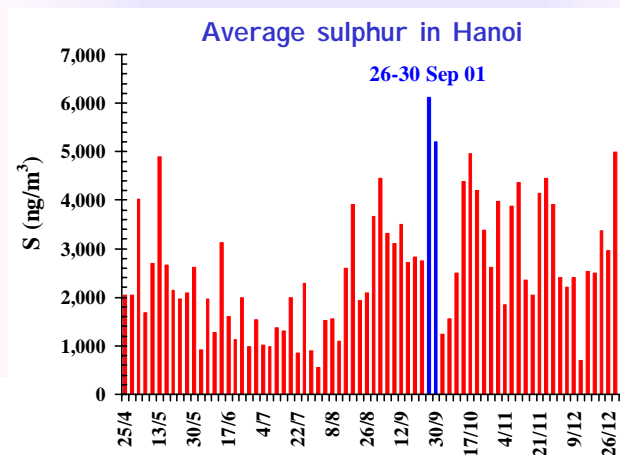
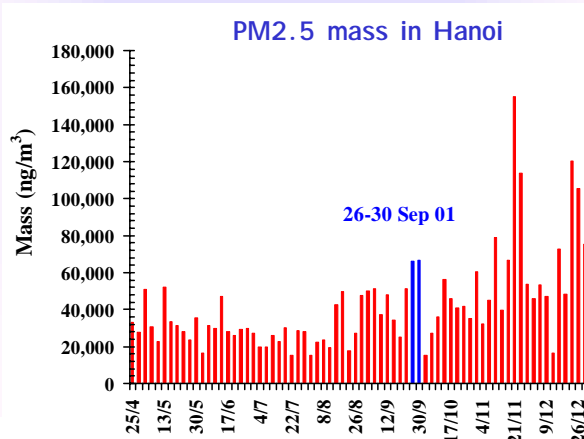
ANSTO fine particle samplers in Hong Kong.



PIXE spectrum of aerosol sample revealing the trace elements present



NOAA 5 day back trajectories show September 2001 Hanoi sulphur source originates from eastern China



Aerosol Characterisation Experiment in Asia (ACE-Asia)