

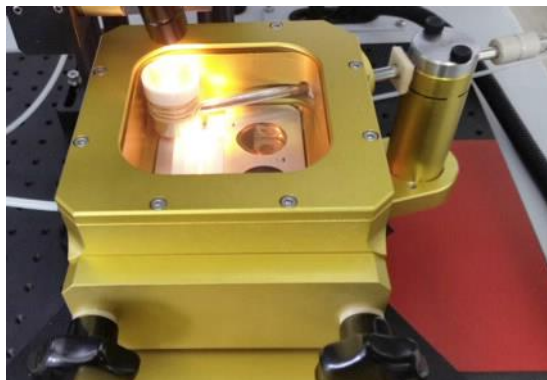
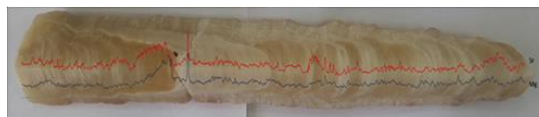
Laser Ablation - ICPs

The laser ablation facility is equipped with the Resonetic M50 laser ablation unit coupled to the qICPMS or ICPAES for chemical and isotopic composition of solid samples.

Laser ablation is particularly useful for *in-situ* analyses of samples requiring an understanding of the elemental variation within a sample.

The instrument utilises a 193 nm ArF excimer laser and a dual volume sample cell design for fast uptake and washout time.

This state-of-the-art unit can provide high resolution measurements of many banded samples, such as corals, speleothems, teeth and otoliths.



Capability Selections

- Laser ablation qICPMS
- Laser ablation ICPAES

For further information please contact:

[Henri Wong](#)

Phone: +61 2 9717 9211

henri.wong@ansto.gov.au