

Windows XP setup guide - eduroam

On this page you will find the eduroam setup guide for Windows XP. If you encounter issues connecting to the eduroam network users are advised to contact their own institution for support.

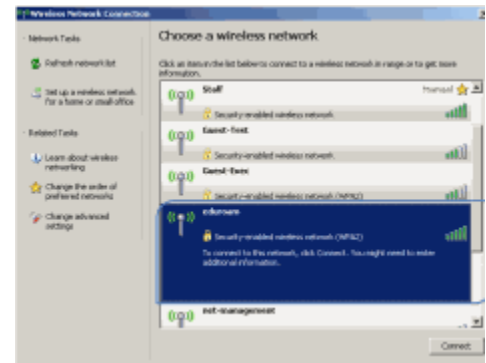
Step 1

- A. Click 'wireless network'



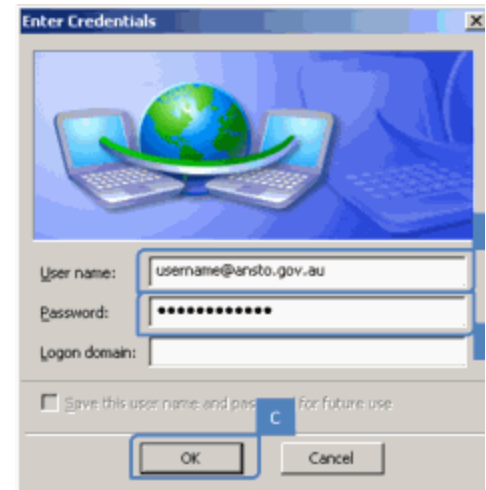
Step 2

- A. Click 'eduroam'



Step 3

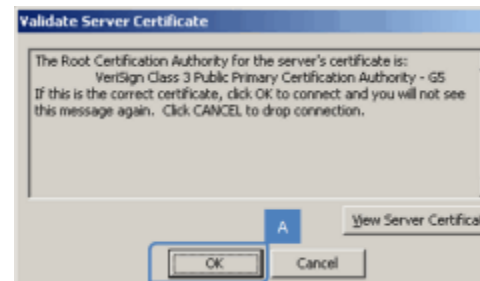
- A. Enter your username in the following format: username@ansto.gov.au (for ANSTO accounts)
B. Enter your password
C. Click 'OK'



Windows XP setup guide - eduroam

Step 4

- A. Click 'OK'



If eduroam is rejecting your username/password ensure that your username is in the appropriate format (i.e. username@ansto.gov.au).

This process can take some time and it is not unusual to see a message 'This is taking longer than expected'. If you get the same screen as the previous step then it's likely that the username &/or password is incorrect.