

MONTHLY SUMMARY SHEET



Summary Sheet For Sites :- **ASP1** ANSTO

Absolute Values (ng/m3)

2004	Weight	NHSO4	Organ.	Soil	Elt. C.	Salt	K	Fe	Zn	Pb
Jan	7930	3669	184	317	791	1832	38	33	4	3
Feb	8389	3378	496	284	606	2227	39	26	4	1
Mar	6052	2263	995	311	653	840	41	31	4	2
Apr	4762	1898	755	186	583	664	32	22	3	2
May	5230	1005	1713	265	690	475	47	29	5	2
Jun	5748	1067	1879	463	1354	56	68	52	26	7
Jul	3795	896	1167	554	614	258	38	44	20	3
Aug	3446	1290	1553	205	579	163	30	26	11	2
Sep	5022	2014	683	310	698	235	45	38	9	4
Oct	5023	1380	1225	455	525	816	40	42	25	2
Nov	4606	1713	243	339	609	727	31	30	13	3
Dec	6896	2478	725	685	550	2175	51	46	4	2
Average	5575	1921	968	365	688	872	42	35	11	3
Stan Dev	1522	903	555	147	222	776	10	9	9	2
Minimum	840	198	0	49	120	0	6	1	0	0
Site : Date	1:12/9	1:20/6	1:4/1	1:12/9	1:29/12	1:1/2	1:12/9	1:18/7	1:25/2	1:18/1
Maximum	13628	7246	5161	4259	3073	6355	245	236	207	24
Site : Date	1:1/12	1:11/2	1:23/5	1:1/12	1:2/6	1:22/2	1:13/6	1:1/12	1:13/10	1:13/6

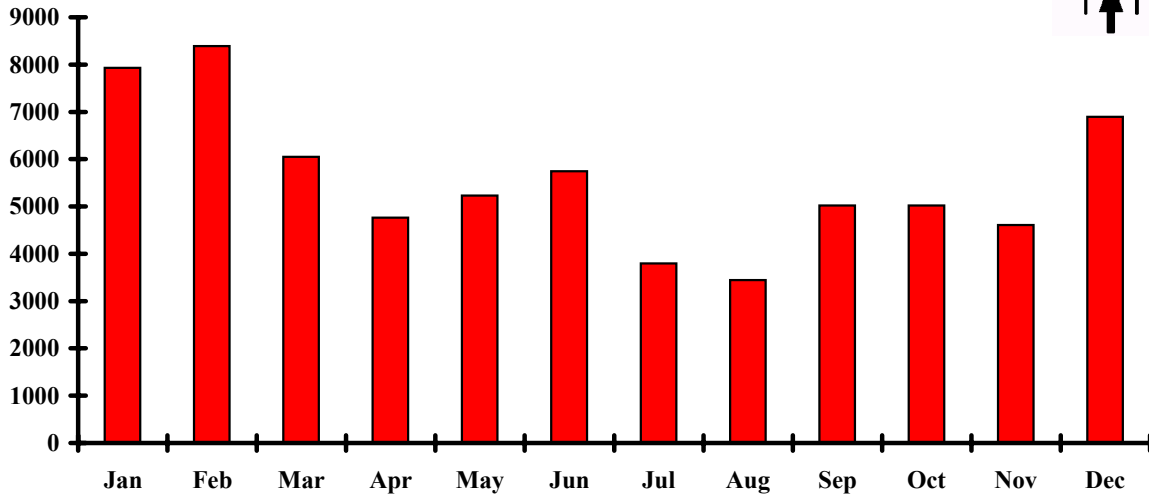
Relative Percentages (%)

2004		NHSO4 %	Organ. %	Soil %	Elt. C. %	Salt %	RCMA %	
Jan		46	2	4	10	23	86	
Feb		40	6	3	7	27	80	
Mar		37	16	5	11	14	86	
Apr		40	16	4	12	14	86	
May		19	33	5	13	9	85	
Jun		19	33	8	24	1	82	
Jul		24	31	15	16	7	87	
Aug		37	45	6	17	5	146	
Sep		40	14	6	14	5	80	
Oct		27	24	9	10	16	92	
Nov		37	5	7	13	16	77	
Dec		36	11	10	8	32	94	
Average		34	20	7	13	14	90	
Stan Dev		9	13	3	4	9	18	
Minimum		4	0	1	2	0		
Site : Date		1:20/6	1:4/1	1:12/9	1:29/12	1:1/2		
Maximum		130	93	76	55	114		
Site : Date		1:11/2	1:23/5	1:1/12	1:2/6	1:22/2		

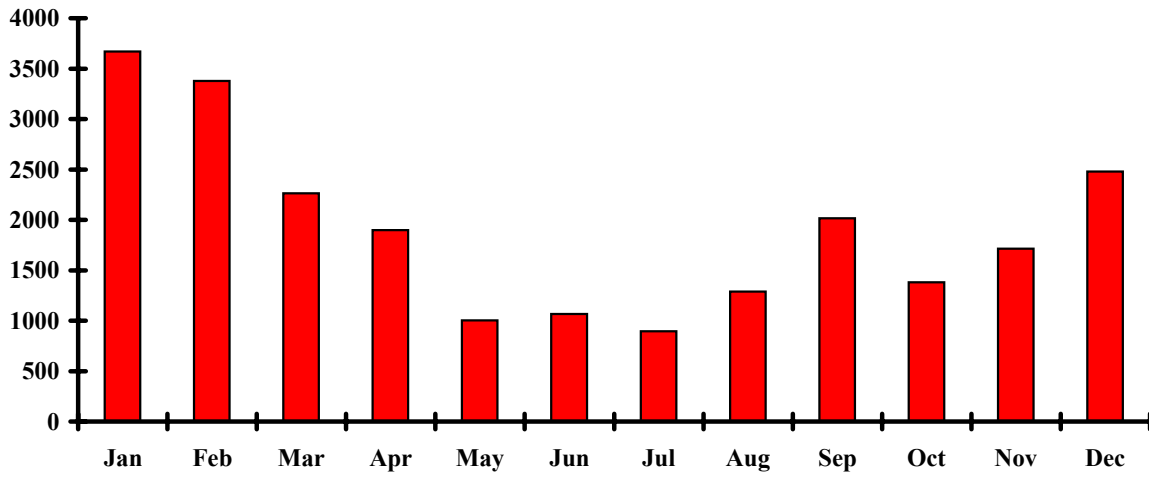


2004

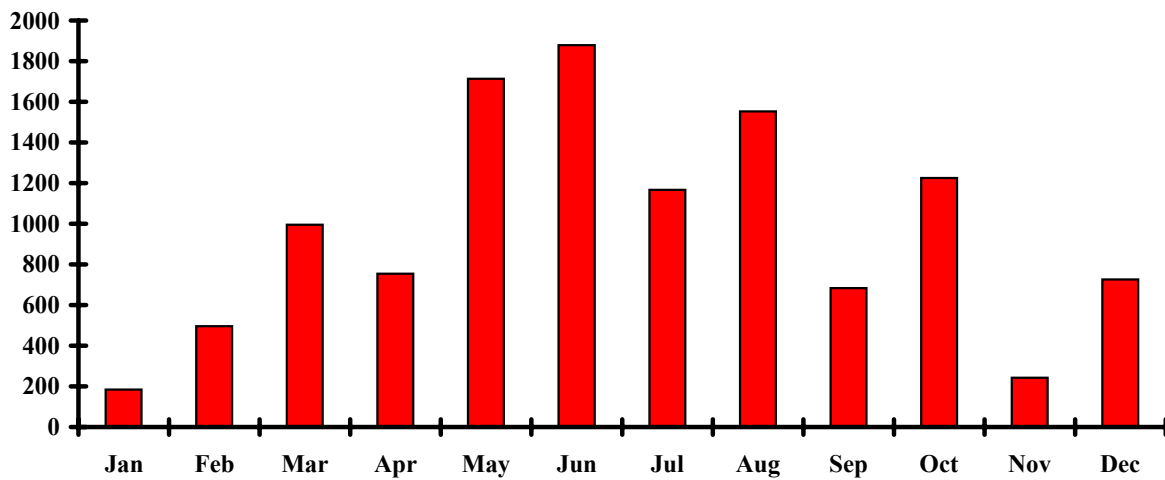
Weight vs Month



Ammonium Suphate vs Month



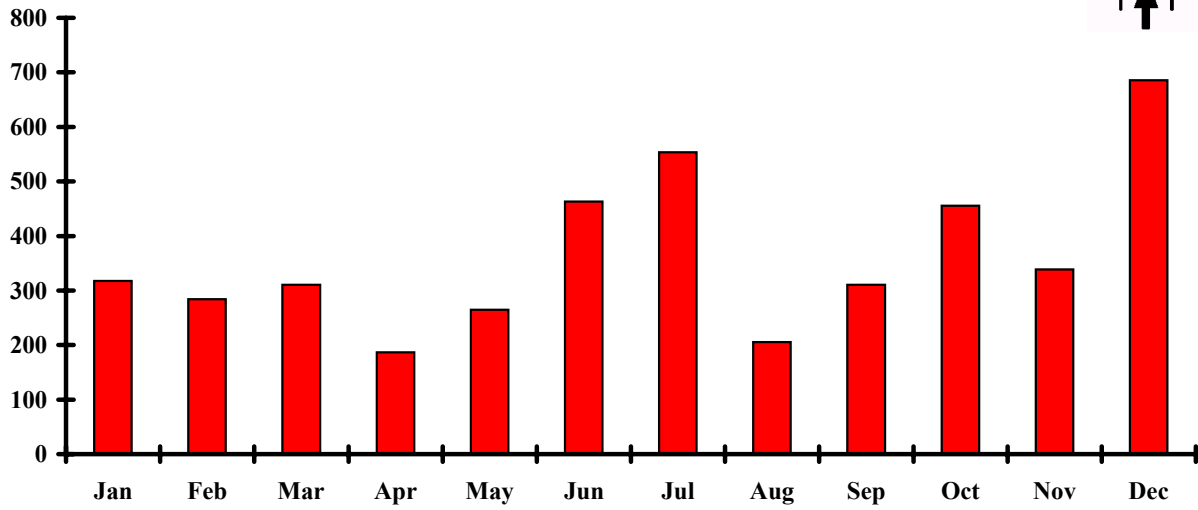
Organics vs Month



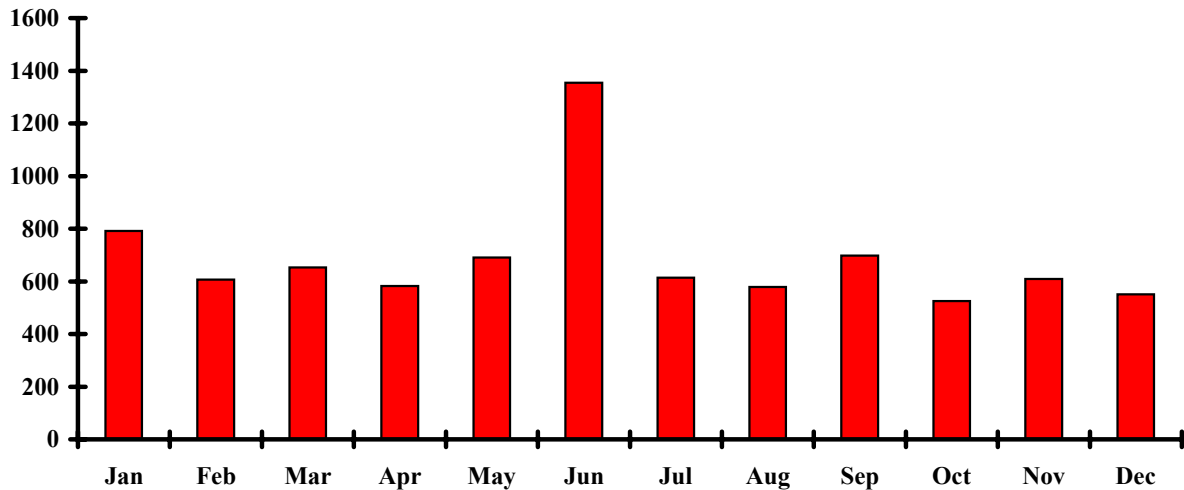


2004

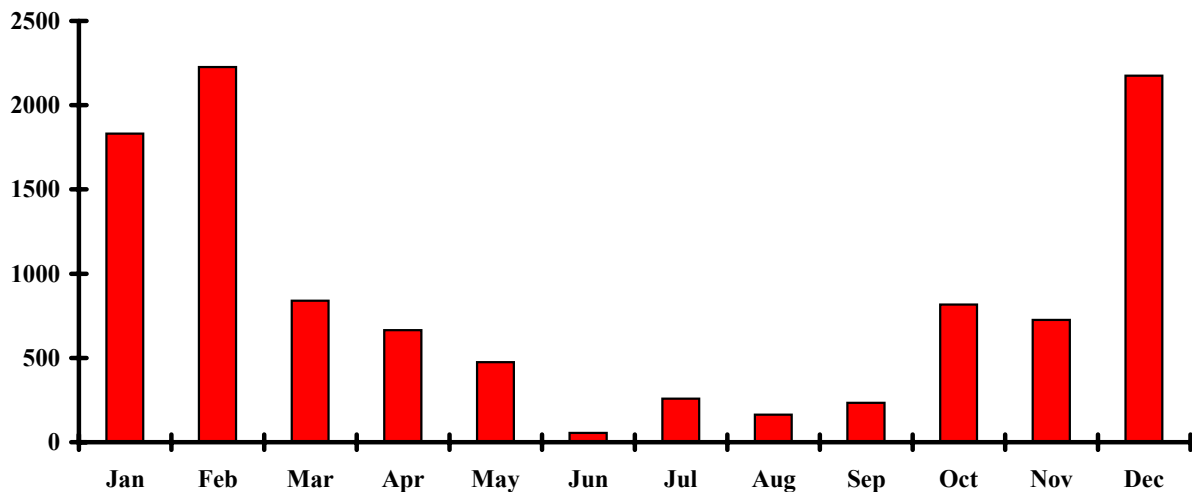
Soil vs Month



Elemental Carbon vs Month



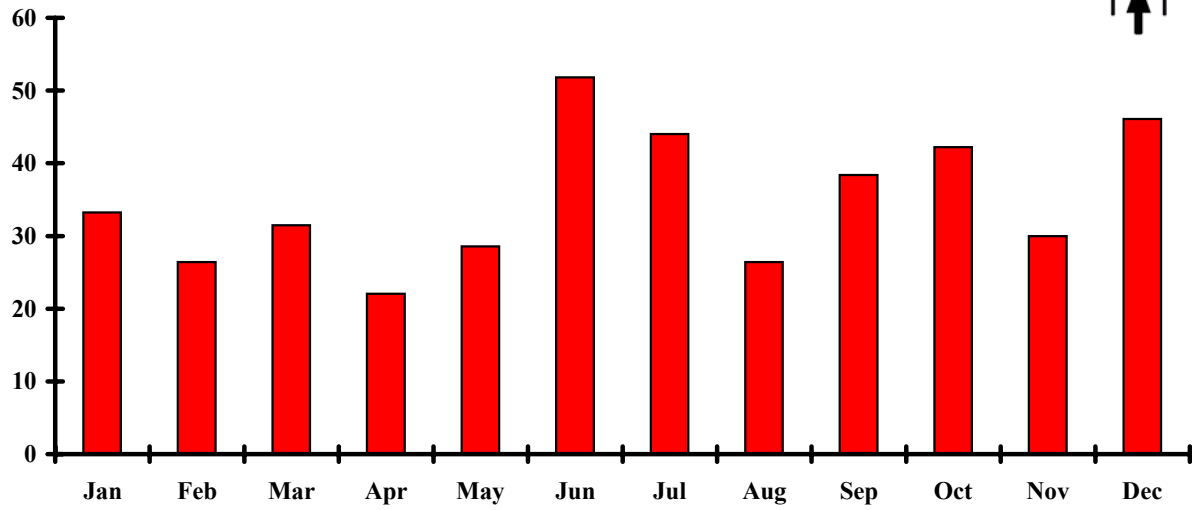
Salt vs Month



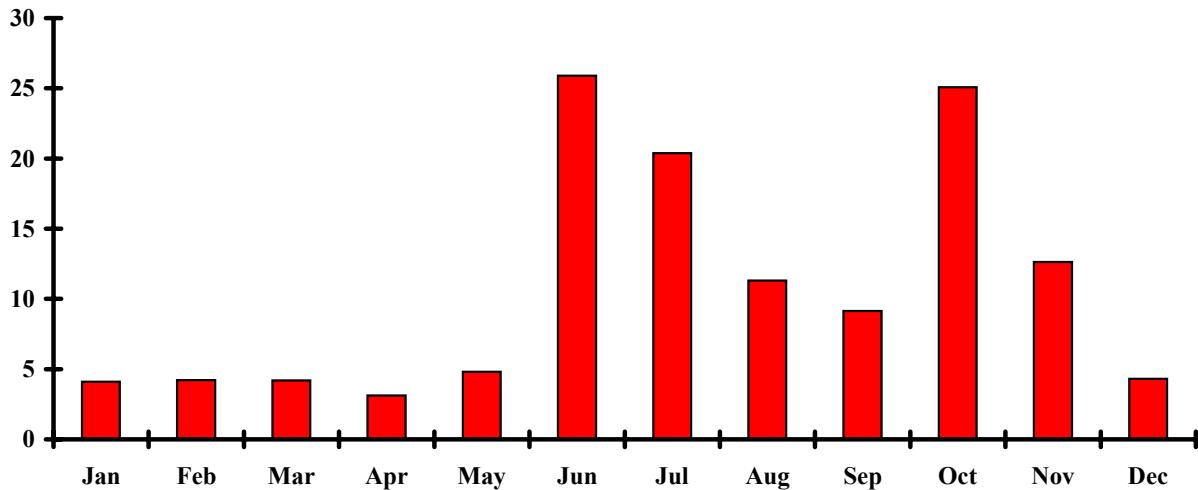


2004

Iron vs Month



Zinc vs Month



Lead vs Month

