

## MONTHLY SUMMARY SHEET



Summary Sheet For Sites :- Mayfield ASP10

Absolute Values (ng/m3)

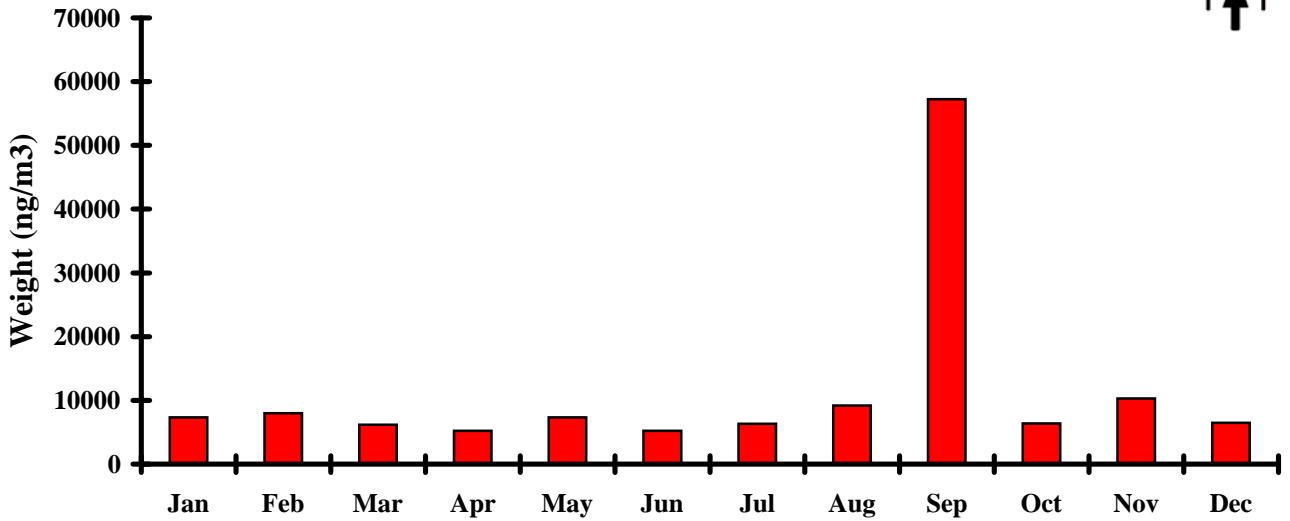
2009	Weight	NHSO4	Organ.	Soil	Elt. C.	Salt	K	Fe	Zn	Pb
Jan	7353	1945	326	717	917	1947	42	63	11	4
Feb	7975	2301	611	311	815	1755	56	23	6	3
Mar	6187	1822	503	713	1055	1120	40	86	16	4
Apr	5206	1161	558	314	700	1330	31	42	4	4
May	7309	1264	1316	486	1247	1443	46	80	20	7
Jun	5223	724	1491	469	1294	442	37	74	23	7
Jul	6322	593	1729	1233	1213	104	58	156	19	8
Aug	9201	916	2783	898	1413	479	74	90	14	14
Sep	57267	1580	55963	8770	1360	399	369	1310	23	9
Oct	6377	1231	675	1589	766	655	57	125	11	2
Nov	10278	1798	1001	2110	754	1136	92	174	10	1
Dec	6486	1866	340	537	749	945	38	40	4	1
Average	11265	1433	5608	1512	1024	980	78	189	13	5
Stan Dev	14564	533	15874	2350	269	578	93	356	7	4
Minimum	2241	226	0	73	0	0	12	4	0	0
Site : Date	10:10/6	10:29/7	10:11/1	10:27/12	10:23/9	10:7/6	10:27/12	10:25/1	10:25/1	10:25/1
Maximum	402055	4036	460024	68944	2920	3872	2377	10704	105	72
Site : Date	10:23/9	10:18/2	10:23/9	10:23/9	10:6/5	10:25/1	10:23/9	10:23/9	10:24/6	10:19/8

Relative Percentages (%)

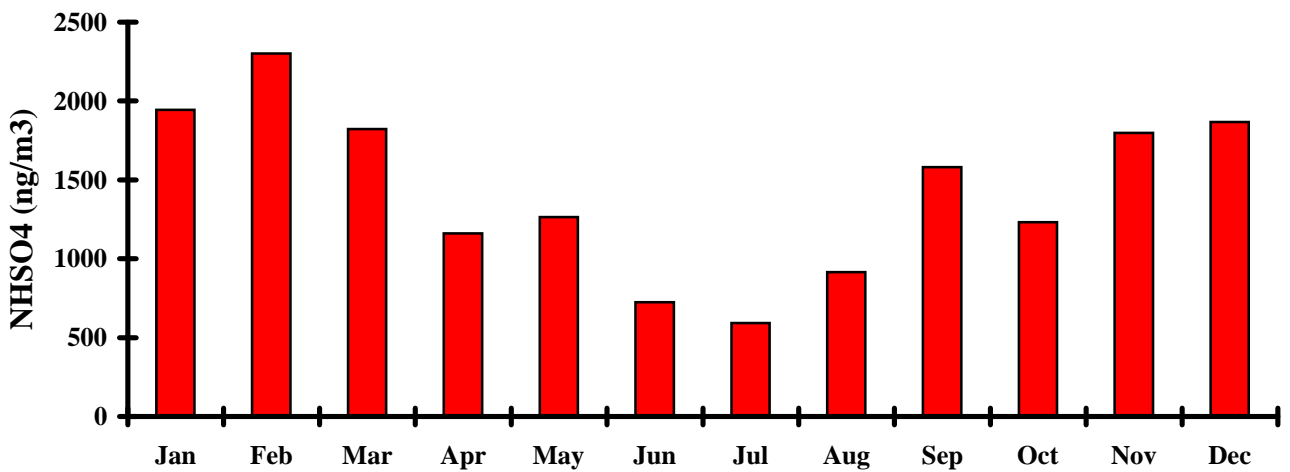
2009		NHSO4 %	Organ. %	Soil %	Elt. C. %	Salt %	RCMA %	
Jan		26	4	10	12	26	79	
Feb		29	8	4	10	22	73	
Mar		29	8	12	17	18	84	
Apr		22	11	6	13	26	79	
May		17	18	7	17	20	78	
Jun		14	29	9	25	8	83	
Jul		9	27	19	19	2	78	
Aug		10	30	10	15	5	69	
Sep		3	98	15	2	1	81	
Oct		19	11	25	12	10	75	
Nov		17	10	21	7	11	66	
Dec		29	5	8	12	15	68	
Average		19	22	12	14	14	76	
Stan Dev		9	26	7	6	9	6	
Minimum		2	0	1	0	0		
Site : Date		10:29/7	10:11/1	10:27/12	10:23/9	10:7/6		
Maximum		36	4084	612	26	34		
Site : Date		10:18/2	10:23/9	10:23/9	10:6/5	10:25/1		



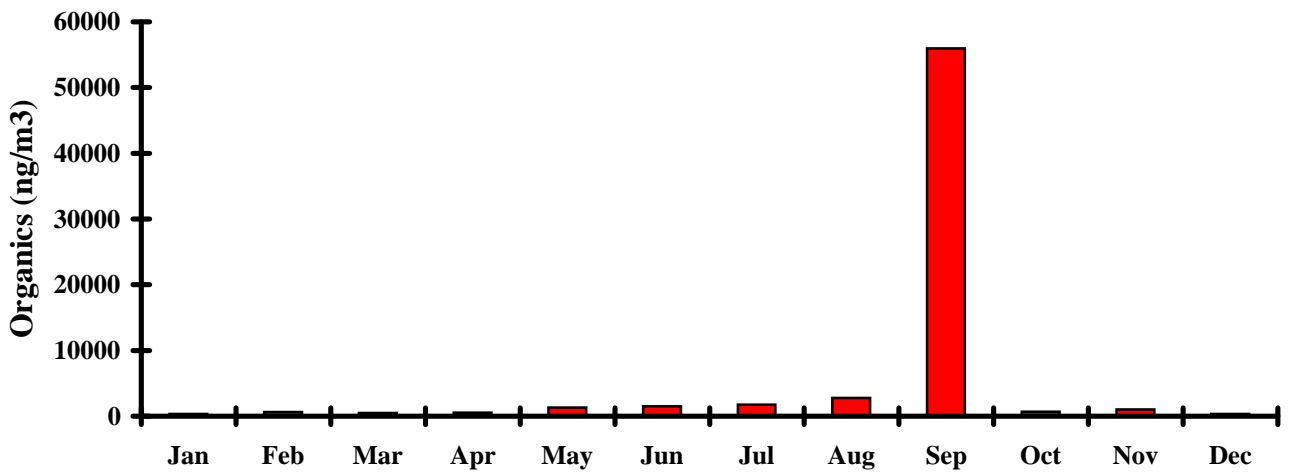
### Weight vs Month



### Ammonium Sulphate vs Month

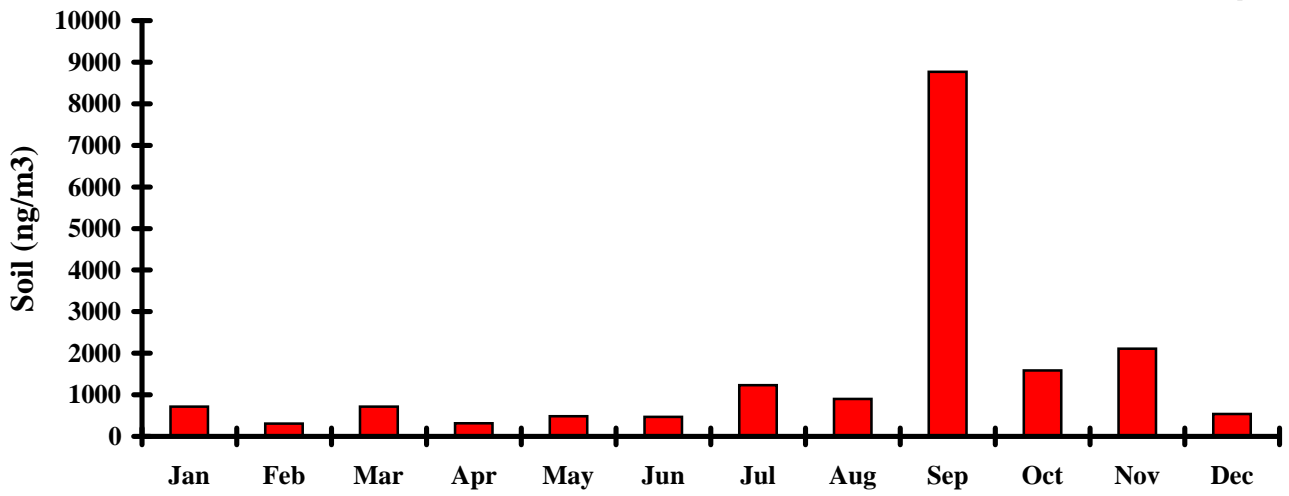


### Organics vs Month

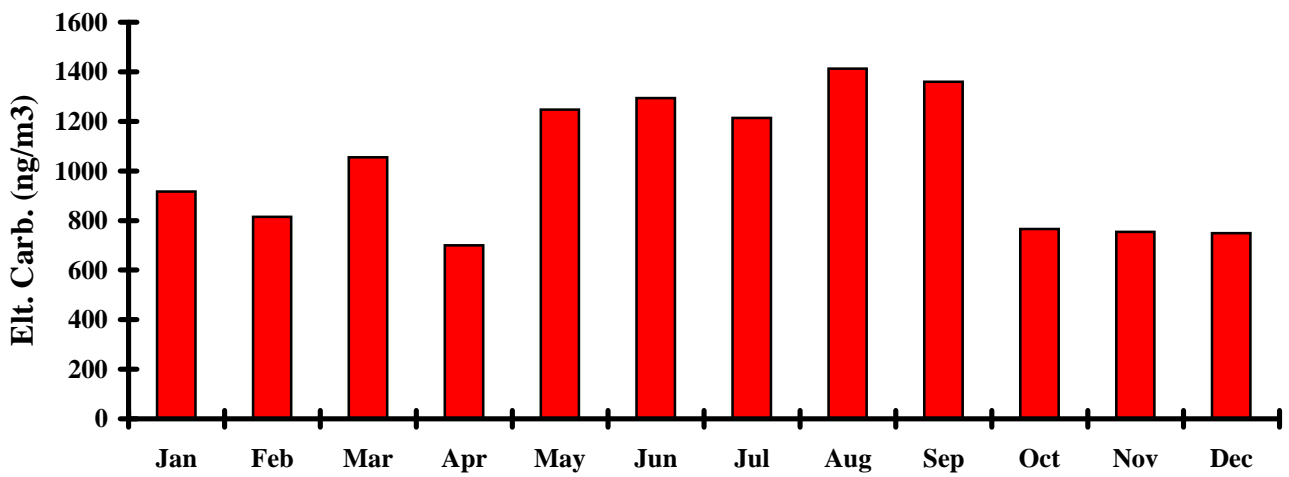




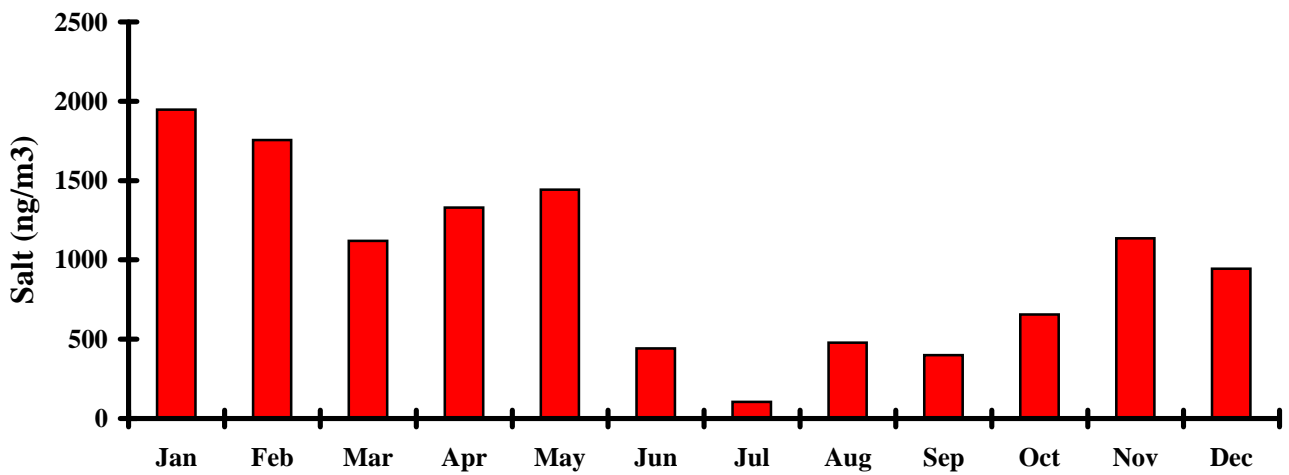
### Soil vs Month



### Elemental Carbon vs Month

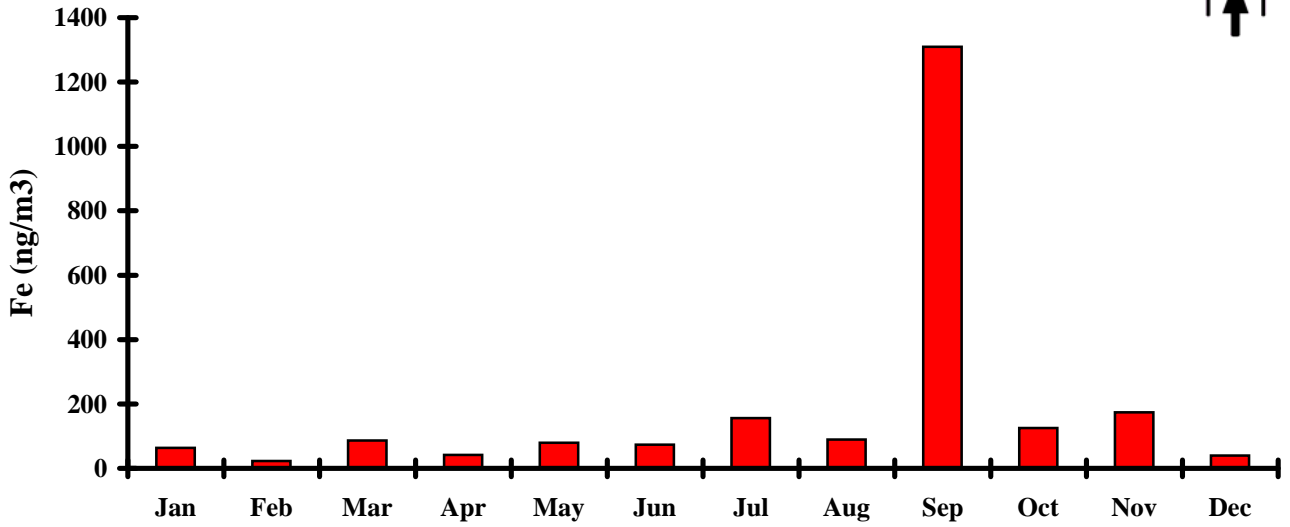


### Salt vs Month

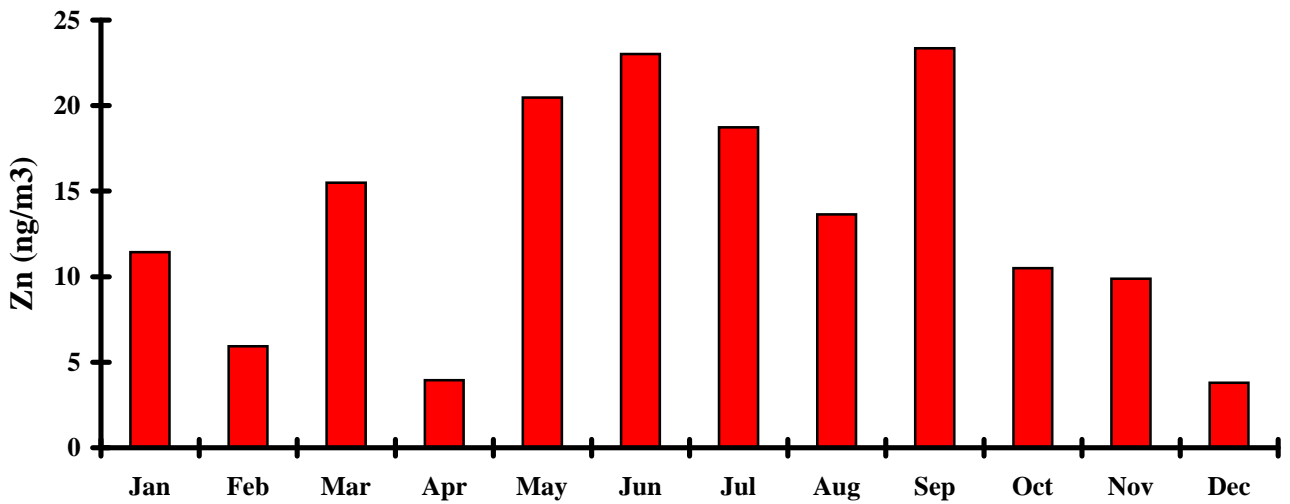




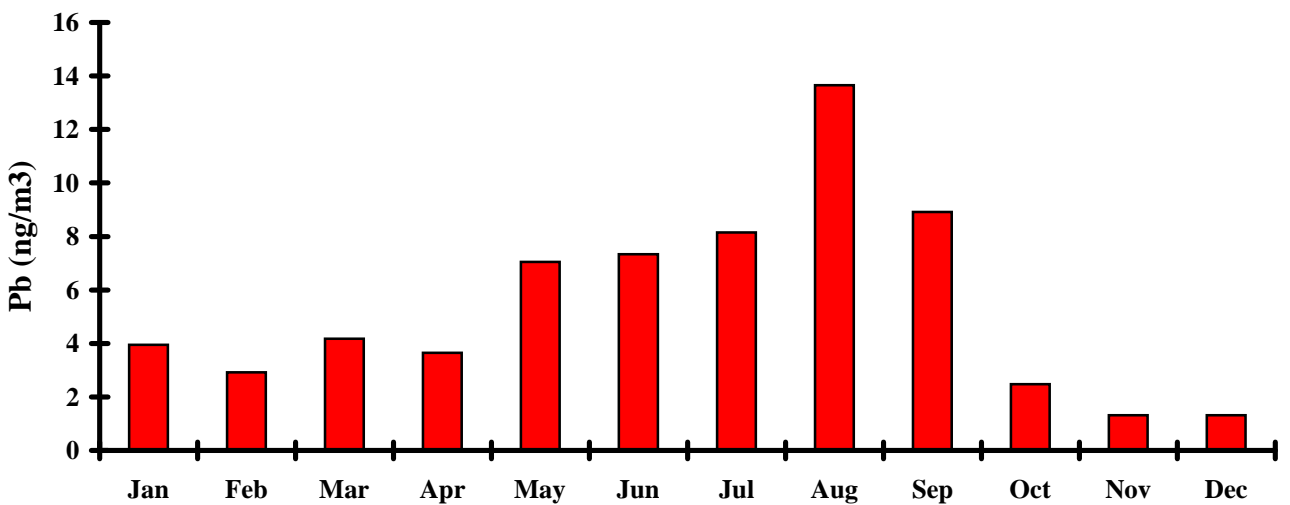
### Iron vs Month

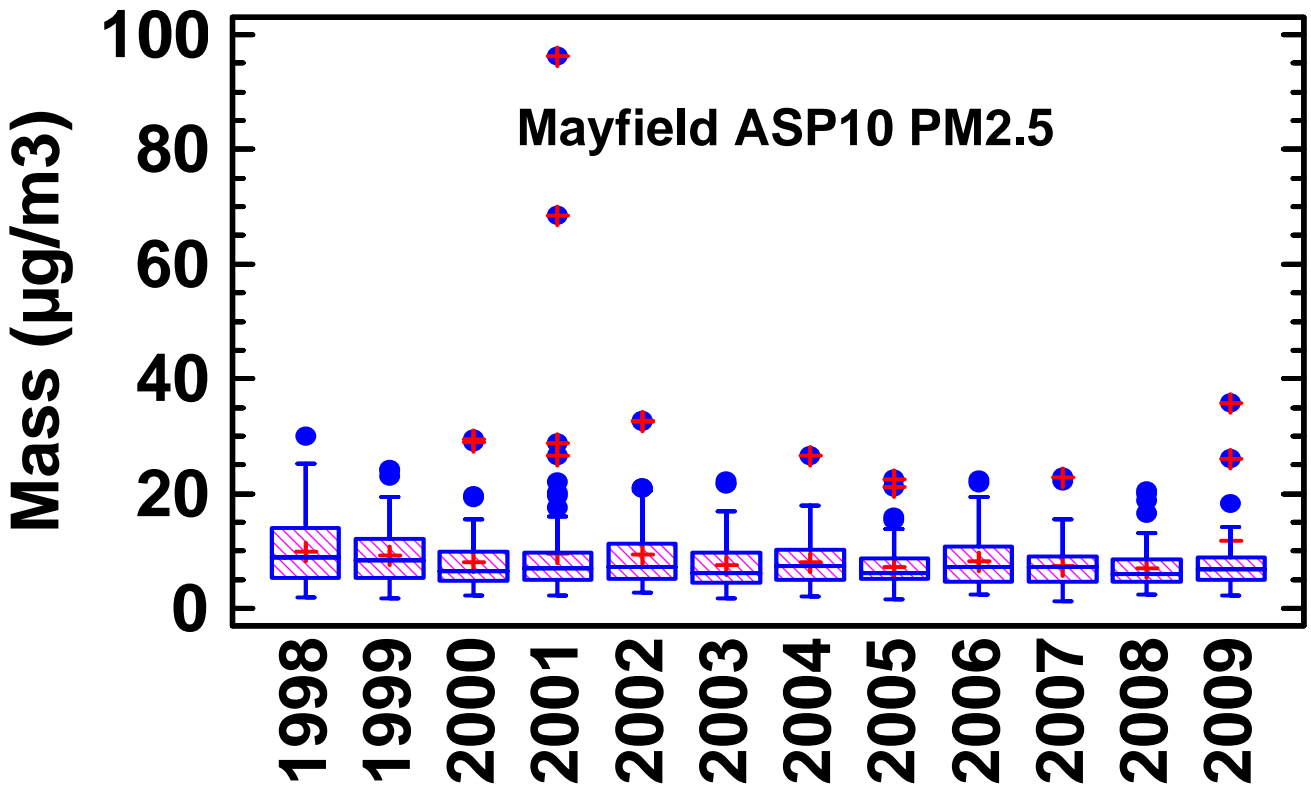


### Zinc vs Month



### Lead vs Month





Box and whisker plot of the 24 hour PM2.5 Mass for each year from 1998 to 2009  
 The (+) are the annual averages  
 The horizontal bars are the annual median value  
 The boxes contain 25% to 75% of the data for that year  
 The whiskers on each box represent the size of the distribution for that year  
 The dots are extreme and outlier events for that year