

## MONTHLY SUMMARY SHEET



### Summary Sheet For Sites :- Mayfield ASP10

Absolute Values (ng/m3)

2002	Weight	NHSO4	Organ.	Soil	Elt. C.	Salt	K	Fe	Zn	Pb
Jan	9128	2016	1833	466	1001	1742	84	37	7	5
Feb	6857	1792	1303	367	1065	511	33	44	15	5
Mar	6878	2011	679	582	1105	965	41	103	17	11
Apr	8131	2074	1662	756	1358	356	53	162	24	13
May	8612	1785	2426	776	1649	408	50	174	33	27
Jun	10953	2300	3885	2022	2201	85	77	293	119	18
Jul	7621	1009	2933	593	1304	379	72	88	34	29
Aug	8554	1291	2835	842	1568	485	80	164	34	21
Sep	8312	1494	1950	1051	1247	605	85	127	36	11
Oct	16834	2241	4868	1968	1561	1513	131	199	24	10
Nov	17535	3243	3299	2966	983	2308	204	178	6	1
Dec										
Average	9947	1932	2516	1126	1368	851	83	142	32	14
Stan Dev	3752	590	1211	827	362	702	48	74	31	9
Minimum	2691	349	0	73	292	0	13	9	0	0
Site : Date	10:17/7	10:17/7	10:9/10	10:26/5	10:27/10	10:13/2	10:6/3	10:26/5	10:27/10	10:17/2
Maximum	32766	7070	11196	10071	4175	4993	395	675	290	81
Site : Date	10:23/10	10:8/5	10:2/10	10:23/10	10:5/6	10:9/10	10:23/10	10:23/10	10:12/6	10:7/7

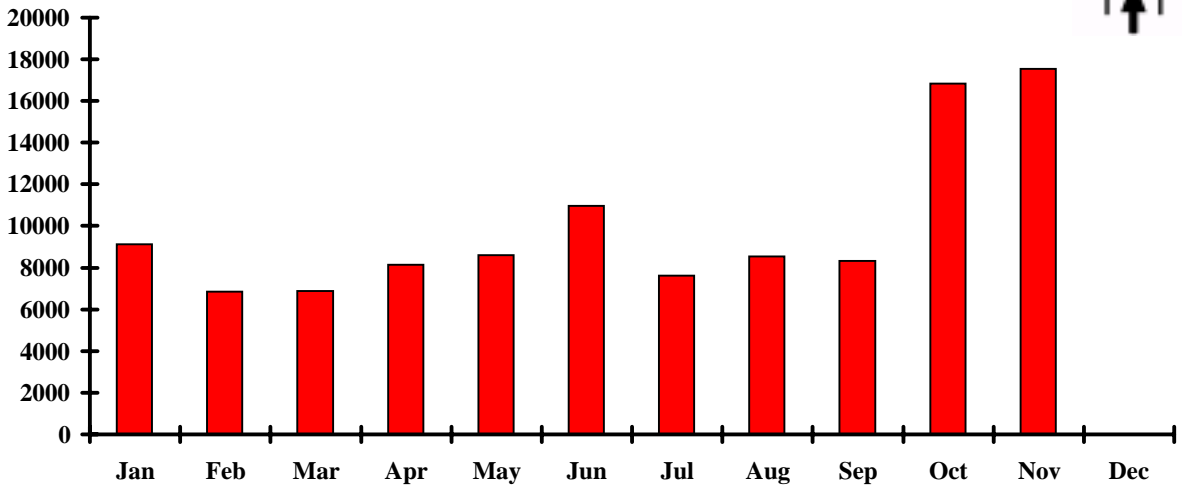
Relative Percentages (%)

2002		NHSO4 %	Organ. %	Soil %	Elt. C. %	Salt %	RCMA %	
Jan		22	20	5	11	19	77	
Feb		26	19	5	16	7	73	
Mar		29	10	8	16	14	78	
Apr		26	20	9	17	4	75	
May		21	28	9	19	5	80	
Jun		21	35	18	20	1	100	
Jul		13	38	8	17	5	89	
Aug		15	33	10	18	6	84	
Sep		18	23	13	15	7	76	
Oct		13	29	12	9	9	71	
Nov		18	19	17	6	13	74	
Dec								
Average		20	25	10	15	8	80	
Stan Dev		5	9	4	4	5	8	
Minimum		4	0	1	3	0		
Site : Date		10:17/7	10:9/10	10:26/5	10:27/10	10:13/2		
Maximum		71	113	101	42	50		
Site : Date		10:8/5	10:2/10	10:23/10	10:5/6	10:9/10		

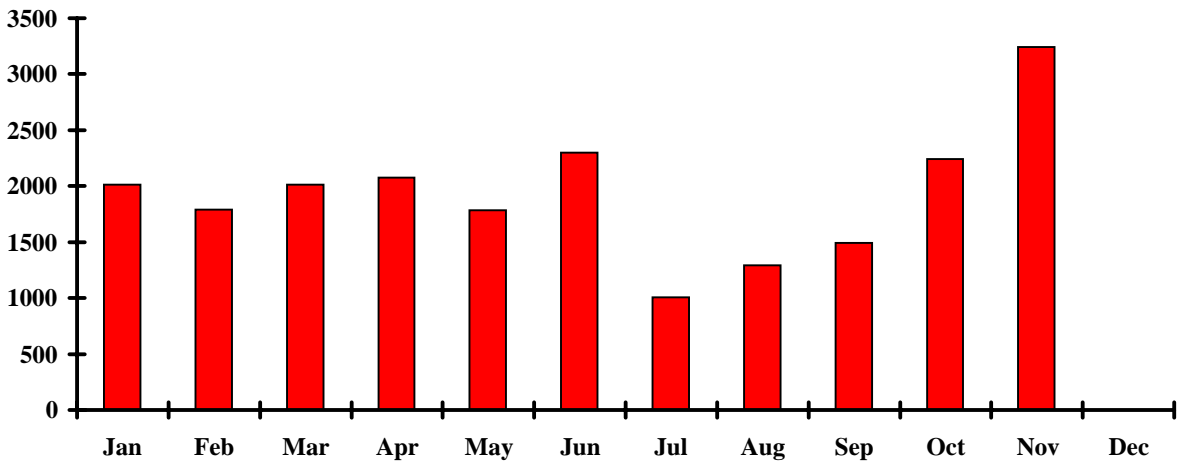


2002

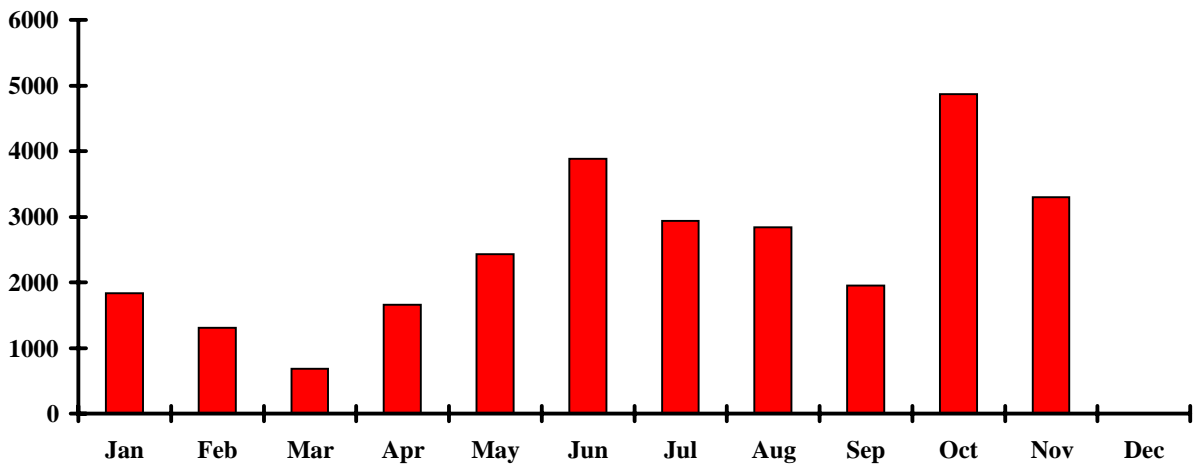
**Weight vs Month**



**Ammonium Suphate vs Month**



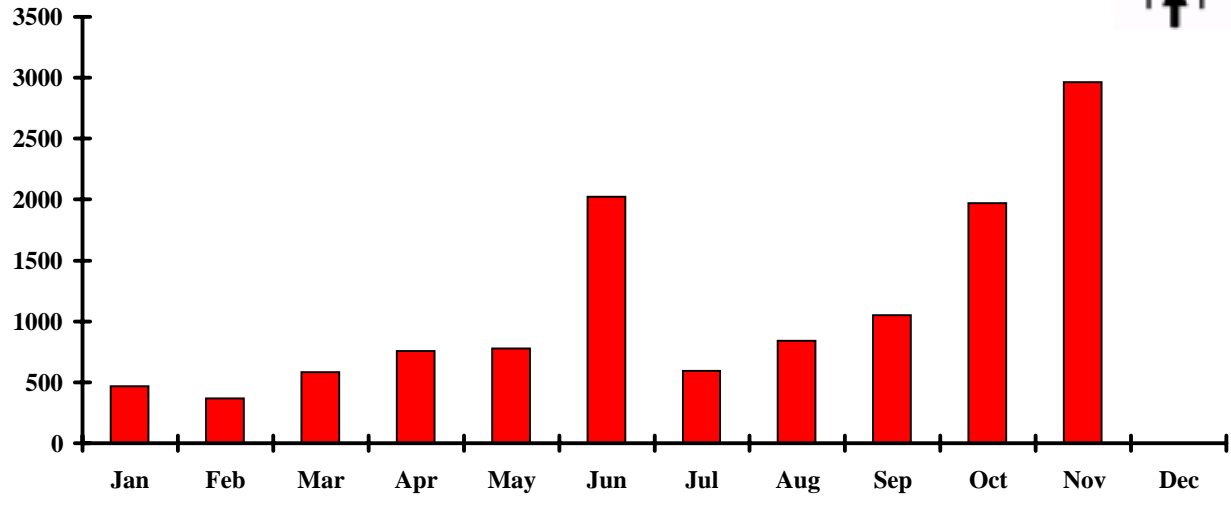
**Organics vs Month**



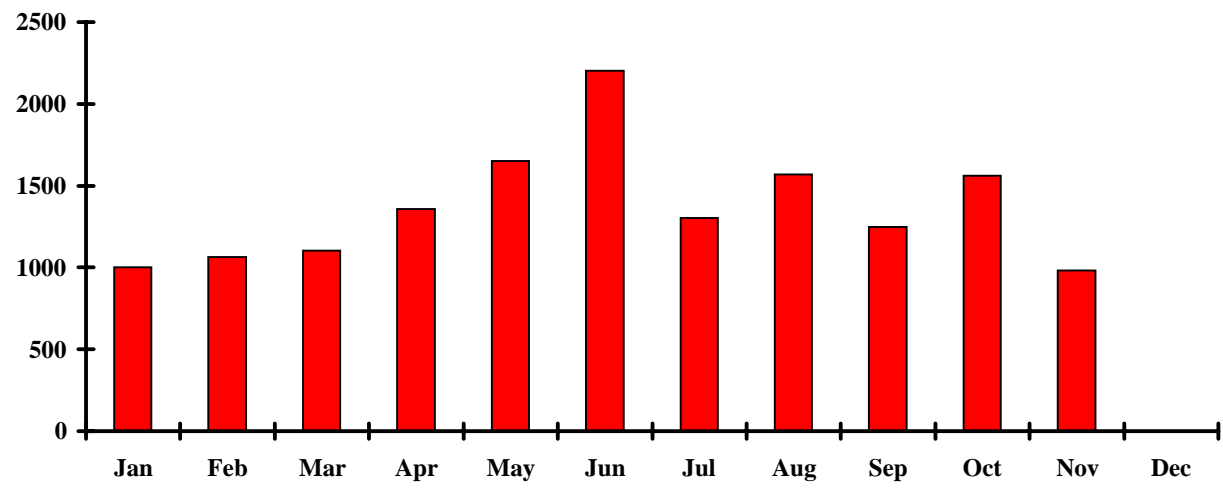


2002

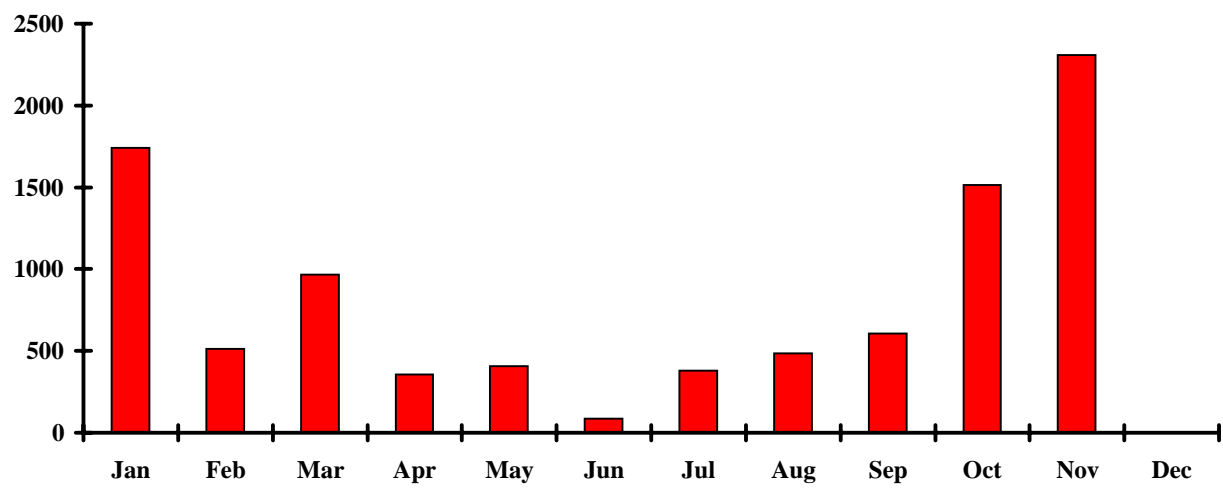
### Soil vs Month



### Elemental Carbon vs Month



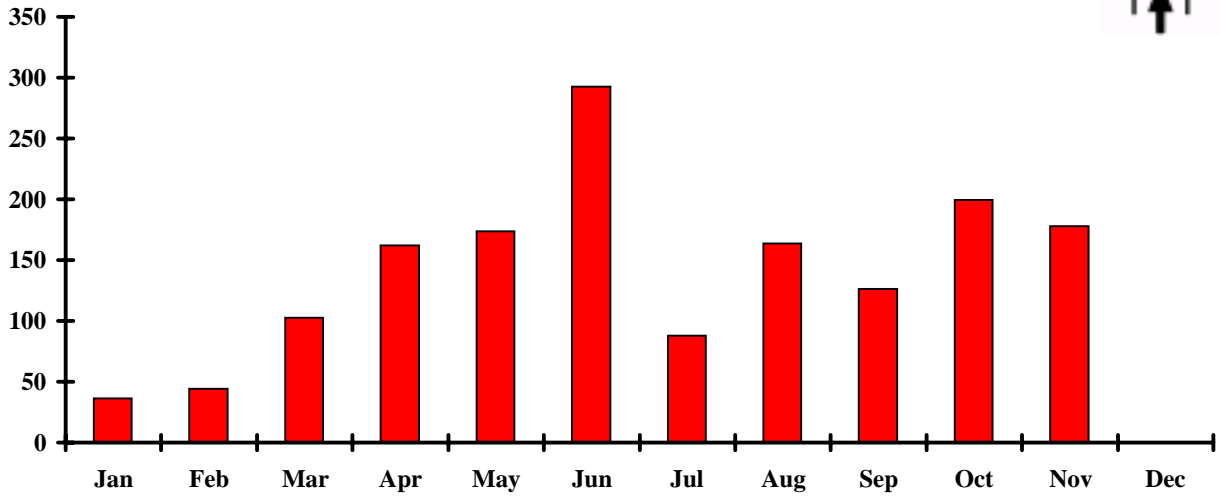
### Salt vs Month



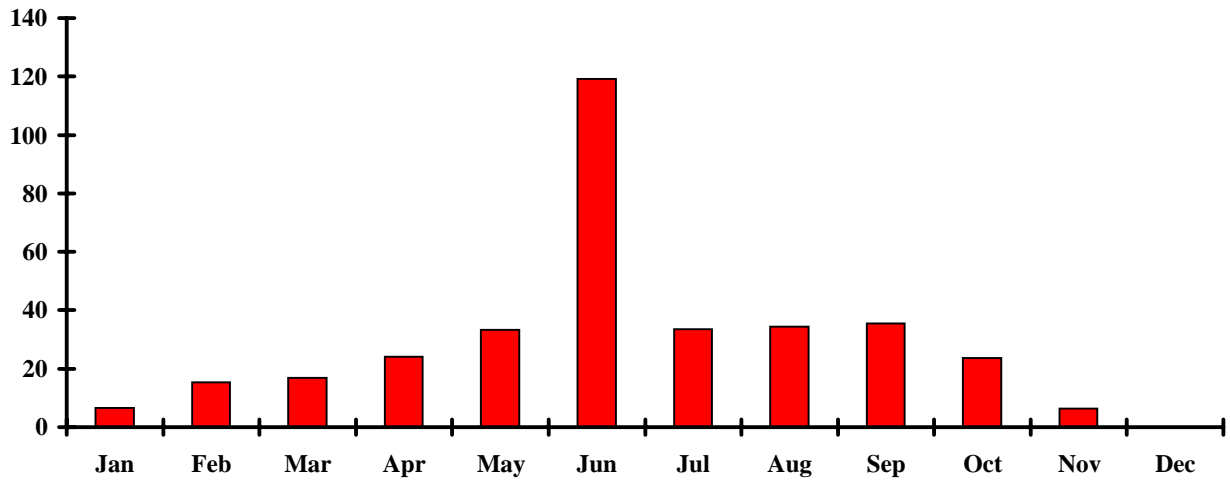


2002

### Iron vs Month



### Zinc vs Month



### Lead vs Month

