

## MONTHLY SUMMARY SHEET



Summary Sheet For Sites :- Mayfield ASP10

Absolute Values (ng/m3)

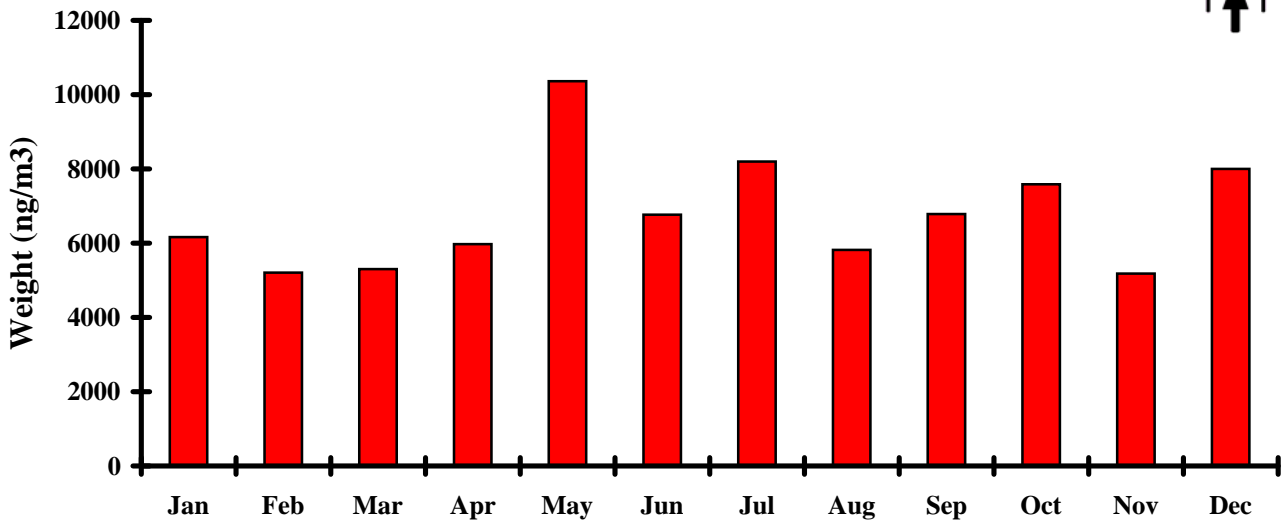
2008	Weight	NHSO4	Organ.	Soil	Elt. C.	Salt	K	Fe	Zn	Pb
Jan	6163	1851	170	354	763	1535	29	47	5	2
Feb	5204	1494	370	355	924	1141	26	61	11	4
Mar	5303	1678	262	418	910	1097	30	52	9	4
Apr	5972	1305	1083	584	1043	805	35	114	27	7
May	10361	2066	2538	1177	1759	567	71	197	65	16
Jun	6768	1358	1590	498	1184	770	45	95	29	10
Jul	8200	800	2693	743	1828	583	70	148	34	15
Aug	5818	919	1401	446	1024	549	47	68	31	8
Sep	6781	1300	825	510	855	1674	58	89	10	8
Oct	7584	2604	446	414	953	1786	46	67	21	6
Nov	5183	1464	144	436	800	1189	26	81	13	2
Dec	7998	2540	498	1052	896	1648	65	98	10	5
Average	6778	1615	1002	582	1078	1112	46	93	22	7
Stan Dev	1542	568	889	271	353	462	17	43	17	5
Minimum	2417	229	0	67	226	0	9	8	1	0
Site : Date	10:2/11	10:13/8	10:2/1	10:17/2	10:2/7	10:6/2	10:20/2	10:17/2	10:20/4	10:6/1
Maximum	20521	4693	7403	3697	3751	5828	195	587	312	38
Site : Date	10:25/5	10:17/12	10:13/7	10:28/5	10:28/5	10:29/10	10:13/7	10:28/5	10:28/5	10:13/7

Relative Percentages (%)

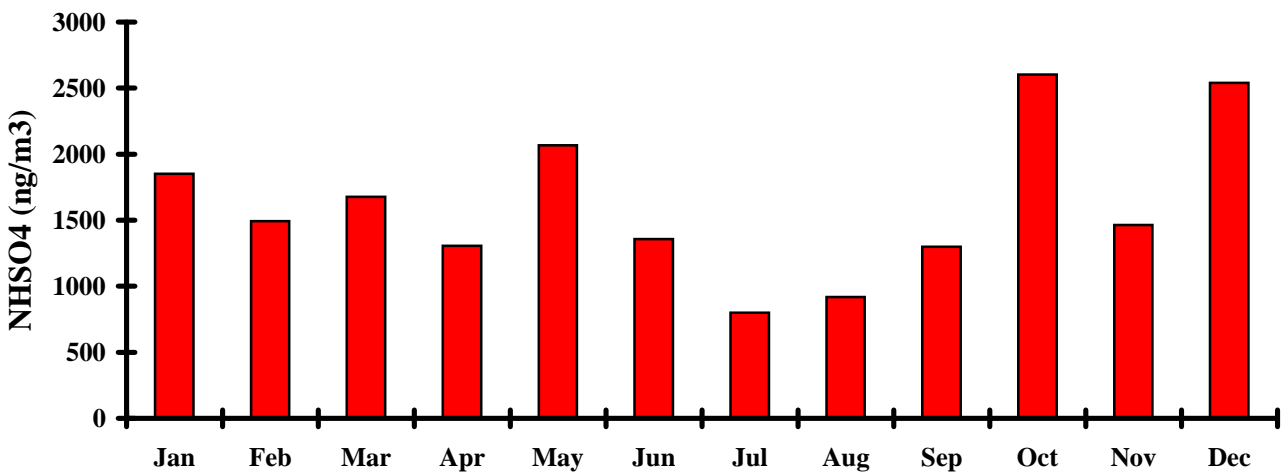
2008		NHSO4 %	Organ. %	Soil %	Elt. C. %	Salt %	RCMA %	
Jan		30	3	6	12	25	76	
Feb		29	7	7	18	22	82	
Mar		32	5	8	17	21	82	
Apr		22	18	10	17	13	80	
May		20	24	11	17	5	80	
Jun		20	23	7	17	11	80	
Jul		10	33	9	22	7	81	
Aug		16	24	8	18	9	75	
Sep		19	12	8	13	25	77	
Oct		34	6	5	13	24	82	
Nov		28	3	8	15	23	77	
Dec		32	6	13	11	21	84	
Average		24	14	8	16	17	80	
Stan Dev		8	10	2	3	7	3	
Minimum		3	0	1	3	0		
Site : Date		10:13/8	10:2/1	10:17/2	10:2/7	10:6/2		
Maximum		69	109	55	55	86		
Site : Date		10:17/12	10:13/7	10:28/5	10:28/5	10:29/10		



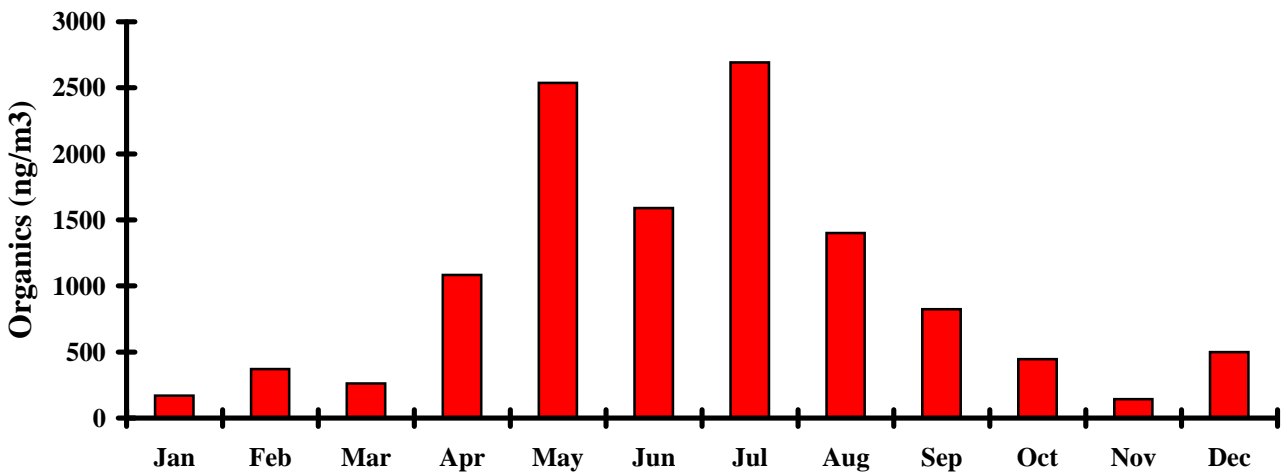
### Weight vs Month



### Ammonium Sulphate vs Month

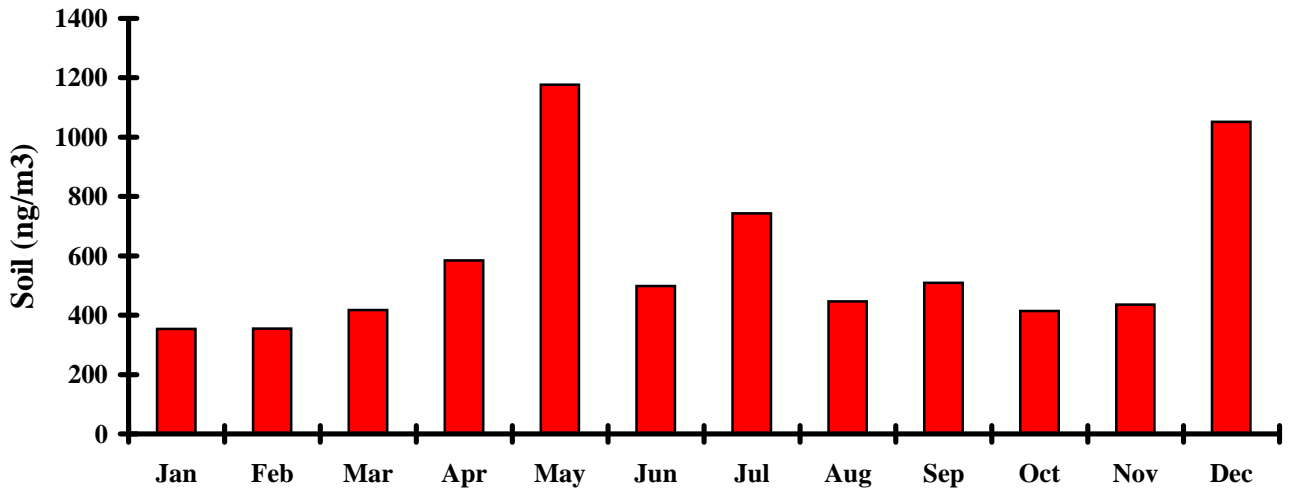


### Organics vs Month

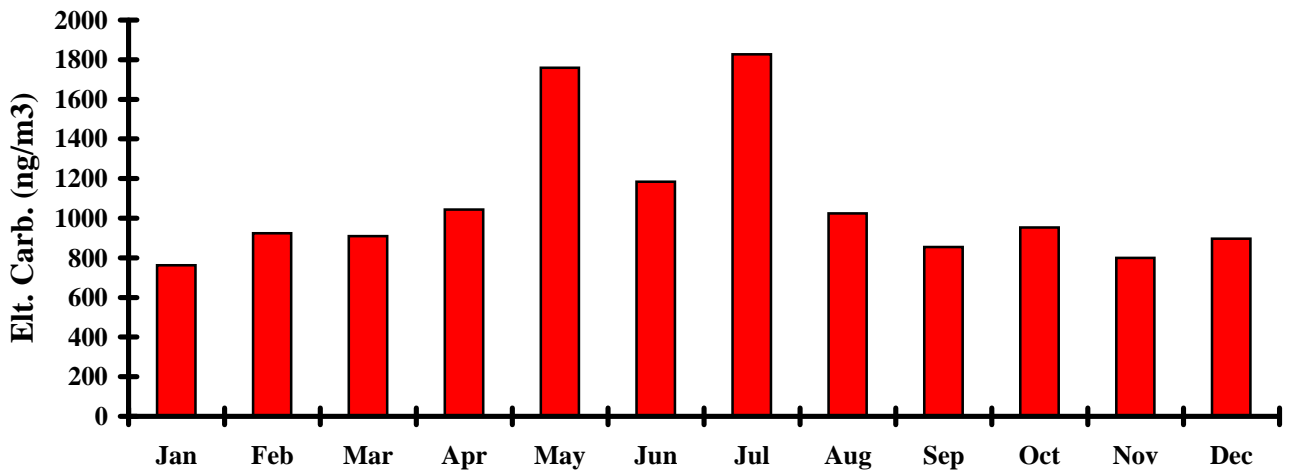




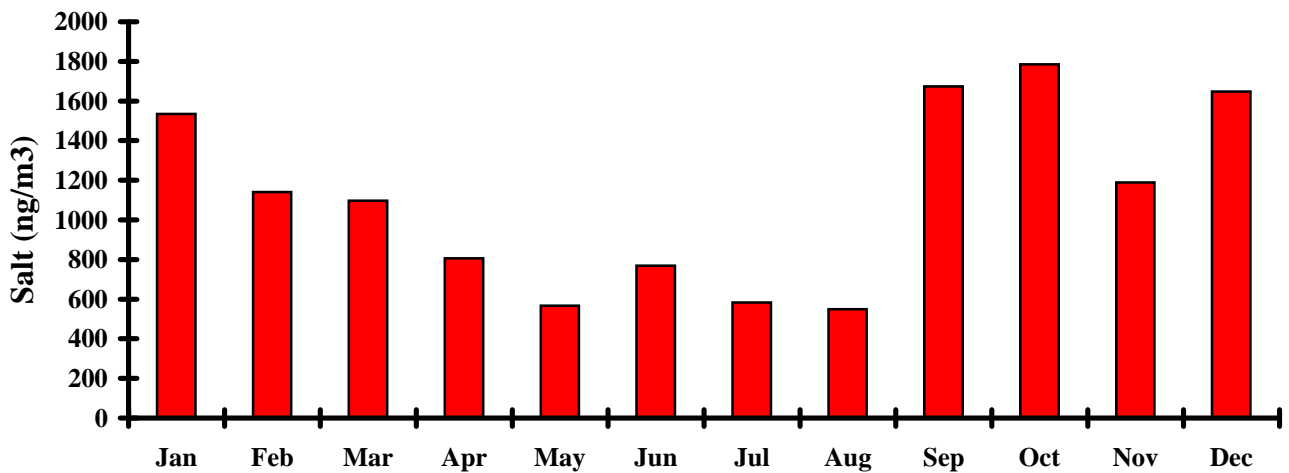
### Soil vs Month



### Elemental Carbon vs Month

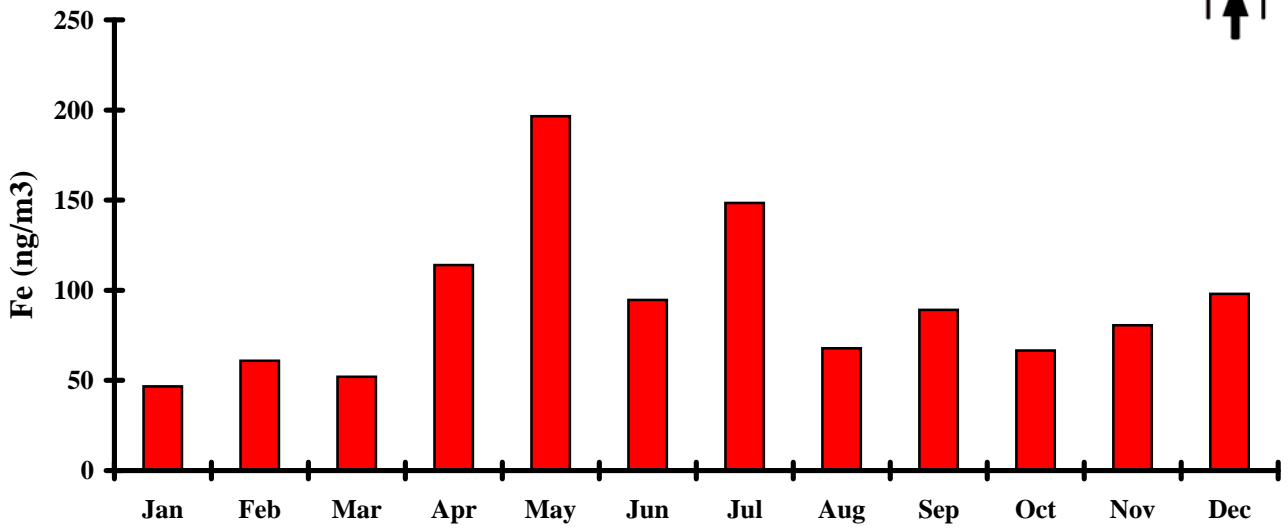


### Salt vs Month

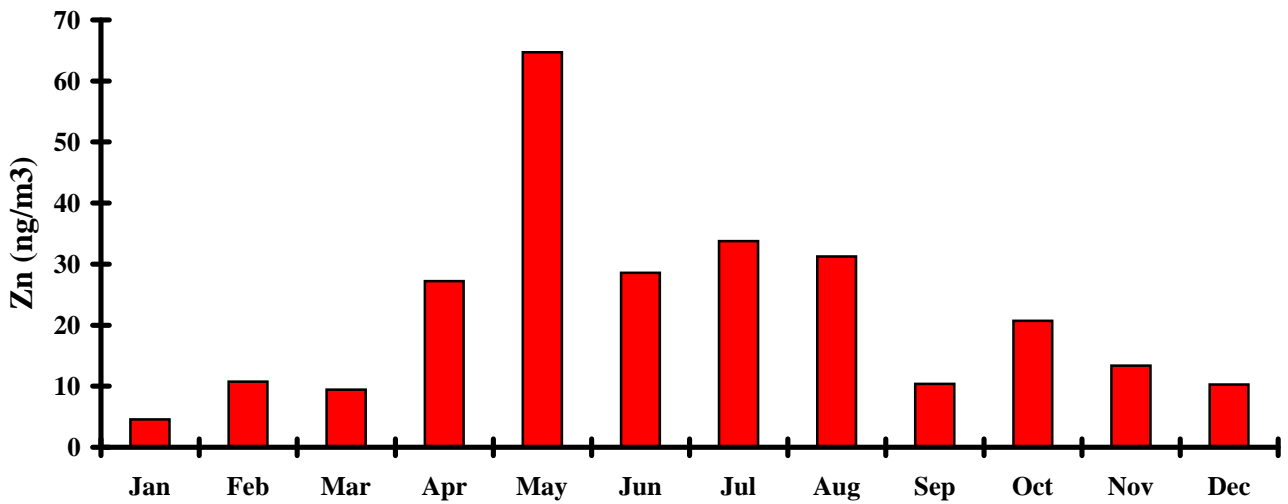




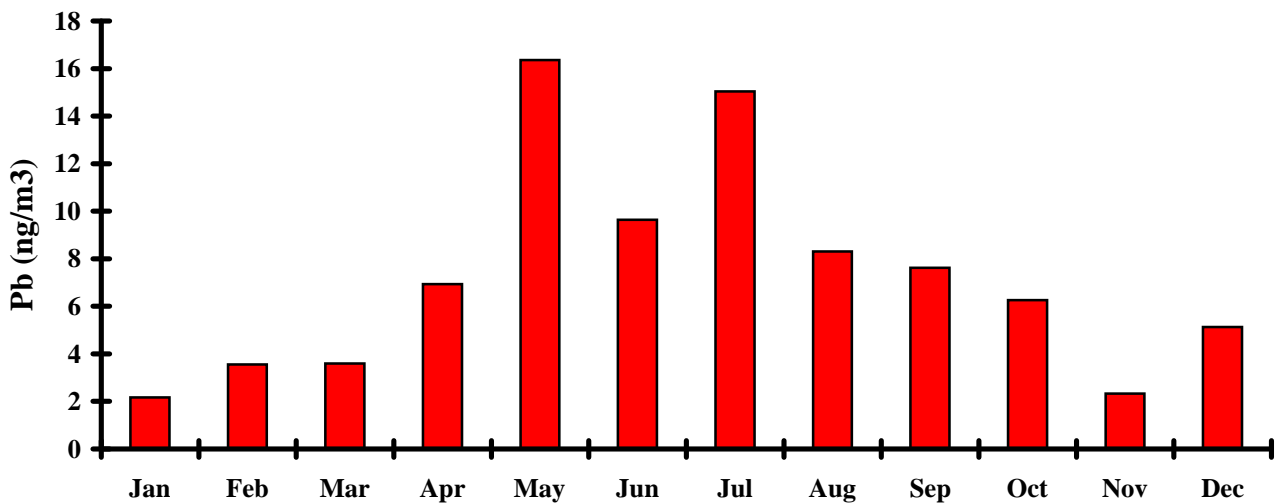
### Iron vs Month

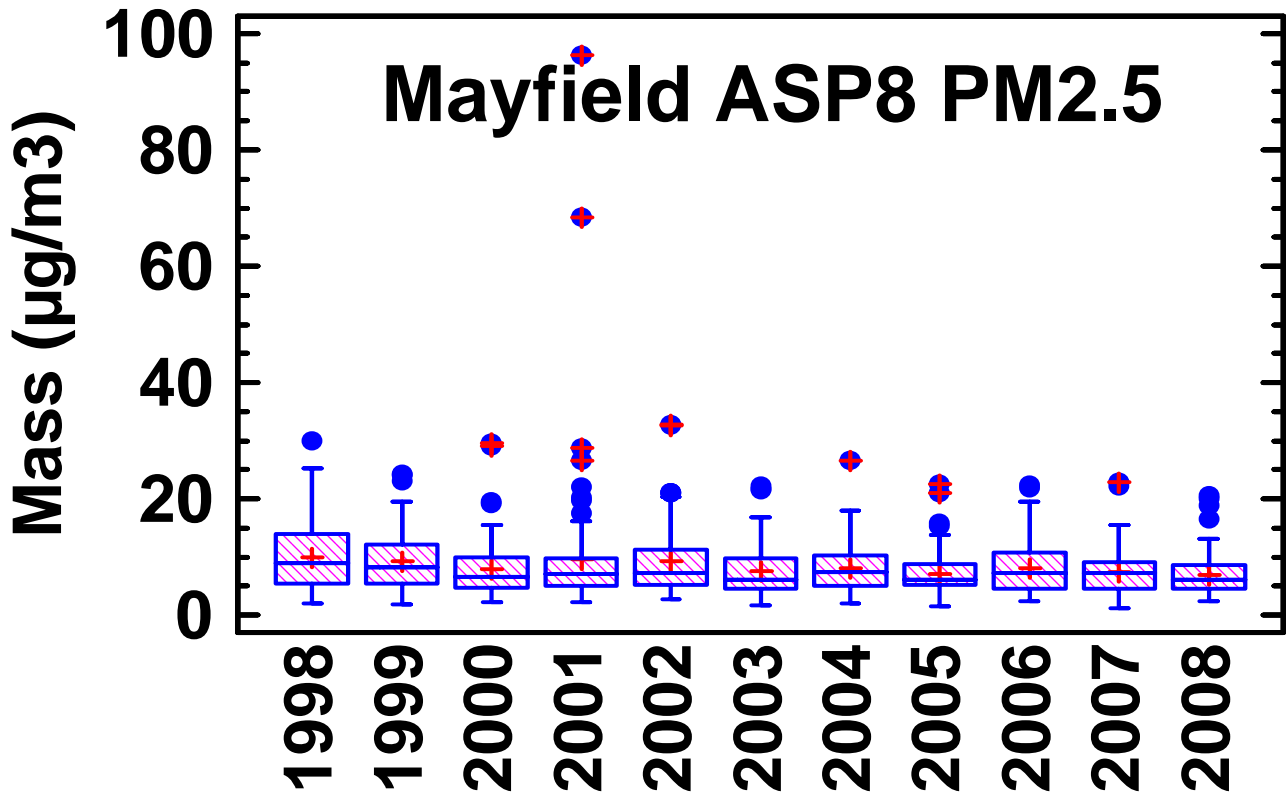


### Zinc vs Month



### Lead vs Month





Box and whisker plot of the 24 hour PM2.5 Mass for each year from 1998 to 2008

The (+) are the annual averages

The horizontal bars are the annual median value

The boxes contain 25% to 75% of the data for that year

The whiskers on each box represent the size of the distribution for that year

The dots are extreme and outlier events for that year