

## MONTHLY SUMMARY SHEET



**Summary Sheet For Sites :- Muswellbrook ASP40**

Absolute Values (ng/m3)

2003	Weight	NHSO4	Organ.	Soil	Elt. C.	Salt	K	Fe	Zn
Jan	6601	1896	2513	527	720	848	45	31	1
Feb	6918	1871	2363	385	799	913	37	22	1
Mar	6759	2174	2436	710	980	366	45	47	4
Apr	5663	1862	2002	264	977	245	27	28	4
May	5553	1599	1763	308	933	0	29	25	4
Jun	6529	1169	2083	276	1153	47	36	25	12
Jul	9642	1348	6989	374	1716	0	50	68	14
Aug	8214	1275	4493	435	1274	228	51	36	4
Sep	4446	922	1443	388	840	175	39	28	3
Oct	7573	1896	779	1585	687	769	64	111	3
Nov	6548	3416	771	518	728	493	30	33	2
Dec	6786	3157	812	434	720	468	31	27	2
Average	6769	1882	2371	517	960	379	40	40	5
Stan Dev	1323	752	1779	358	300	325	11	26	4
Minimum	1433	238	0	80	-216	0	8	5	0
Site : Date	40:2/11	40:2/11	40:12/10	40:20/4	40:29/10	40:9/2	40:2/11	40:15/6	40:15/6
Maximum	26945	10953	15081	8928	3156	3307	243	597	68
Site : Date	40:24/8	40:12/11	40:24/8	40:29/10	40:24/8	40:5/10	40:29/10	40:29/10	40:18/6

Relative Percentages (%)

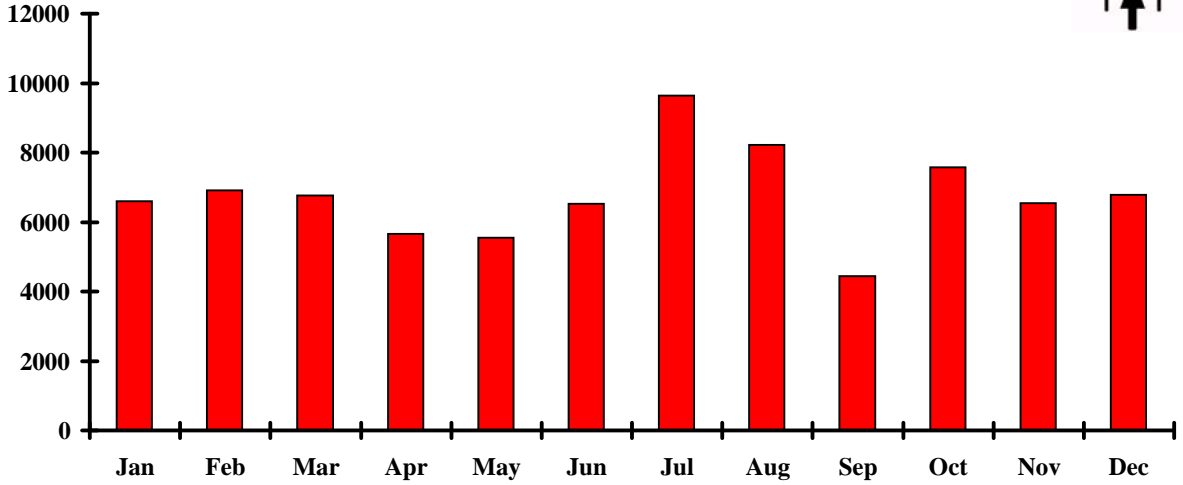
2003		NHSO4 %	Organ. %	Soil %	Elt. C. %	Salt %	RCMA %	
Jan		29	38	8	11	13	107	
Feb		27	34	6	12	13	101	
Mar		32	36	10	14	5	104	
Apr		33	35	5	17	4	96	
May		29	32	6	17	0	85	
Jun		18	32	4	18	1	68	
Jul		14	72	4	18	0	111	
Aug		16	55	5	16	3	100	
Sep		21	32	9	19	4	86	
Oct		25	10	21	9	10	76	
Nov		52	12	8	11	8	87	
Dec		47	12	6	11	7	82	
Average		28	33	8	14	6	92	
Stan Dev		12	18	5	3	5	13	
Minimum		4	0	1	-3	0		
Site : Date		40:2/11	40:12/10	40:20/4	40:29/10	40:9/2		
Maximum		162	223	132	47	49		
Site : Date		40:12/11	40:24/8	40:29/10	40:24/8	40:5/10		



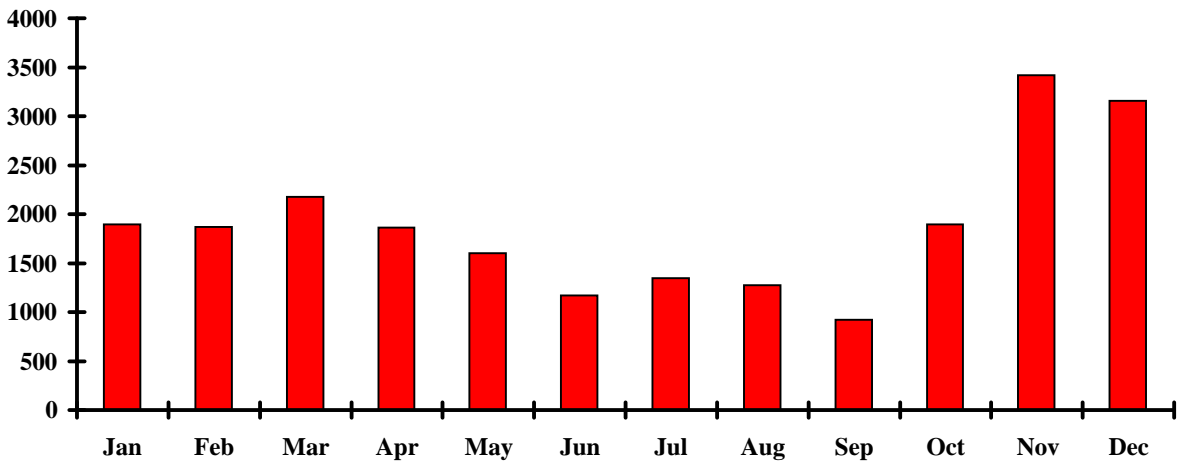


2003

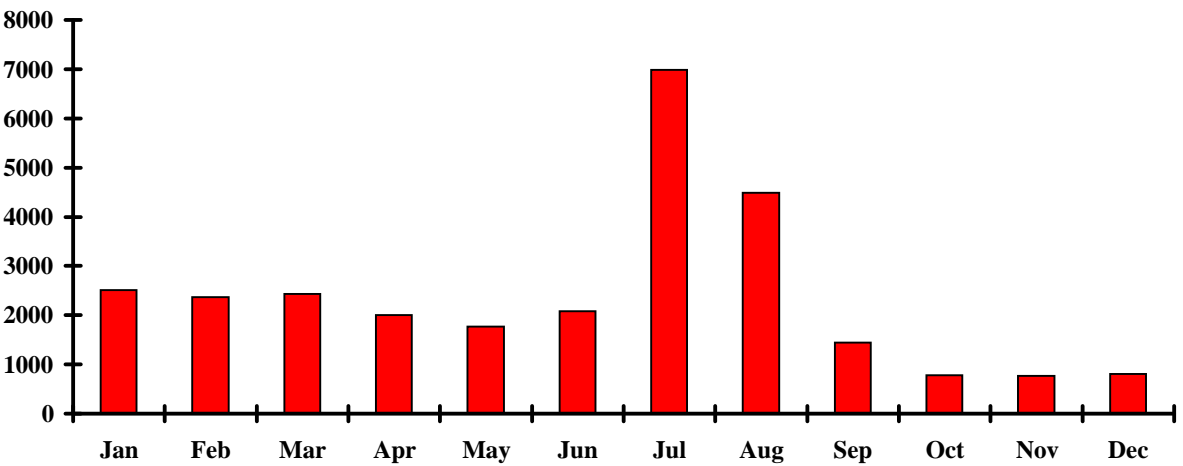
**Weight vs Month**



**Ammonium Suphate vs Month**



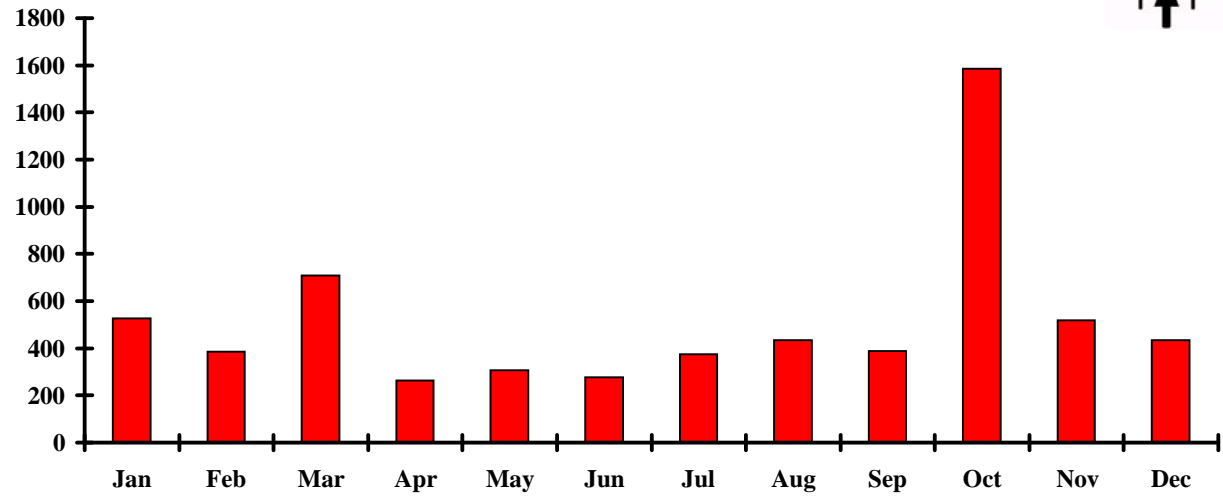
**Organics vs Month**



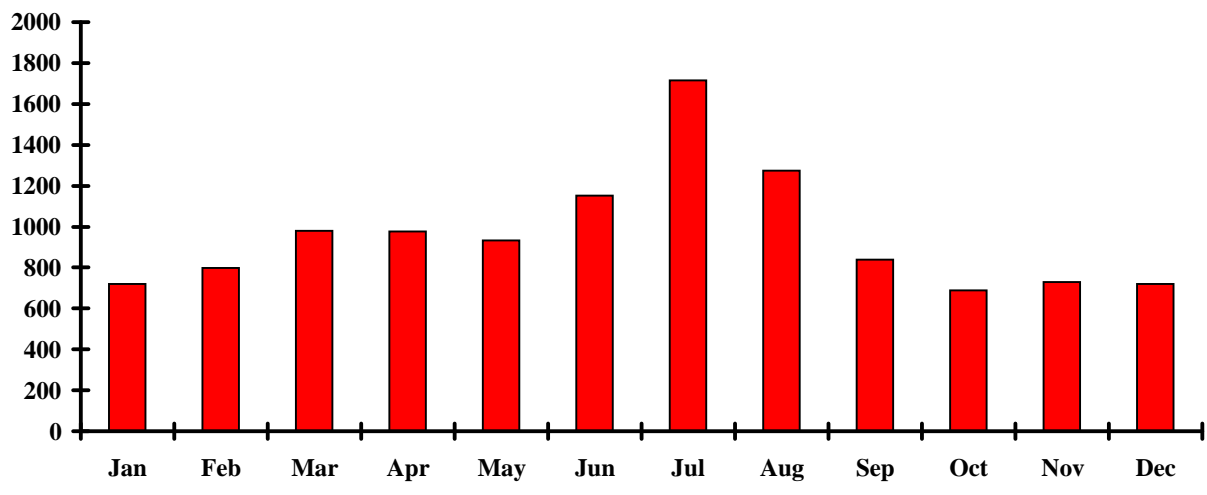


2003

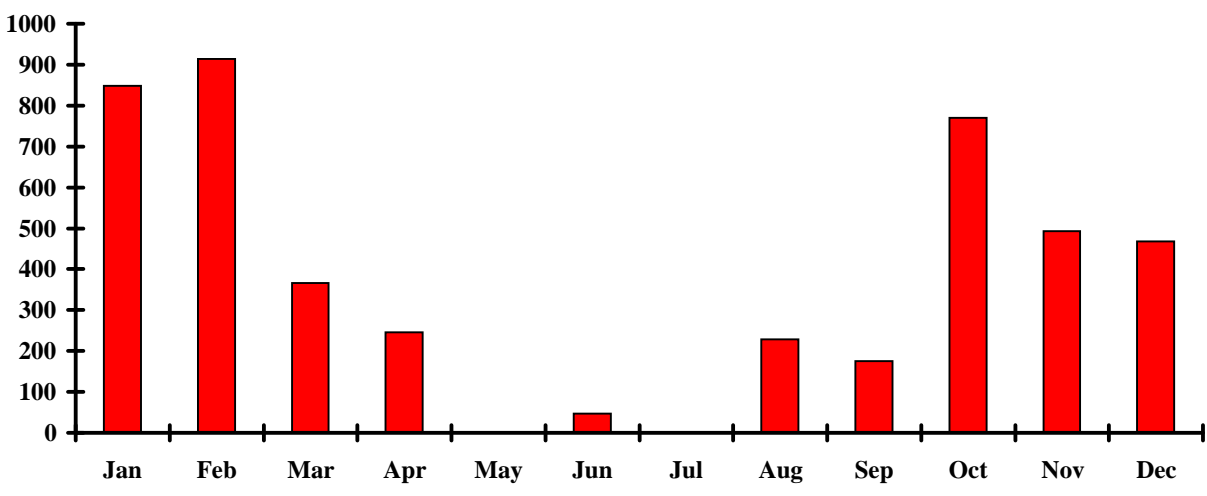
### Soil vs Month



### Elemental Carbon vs Month



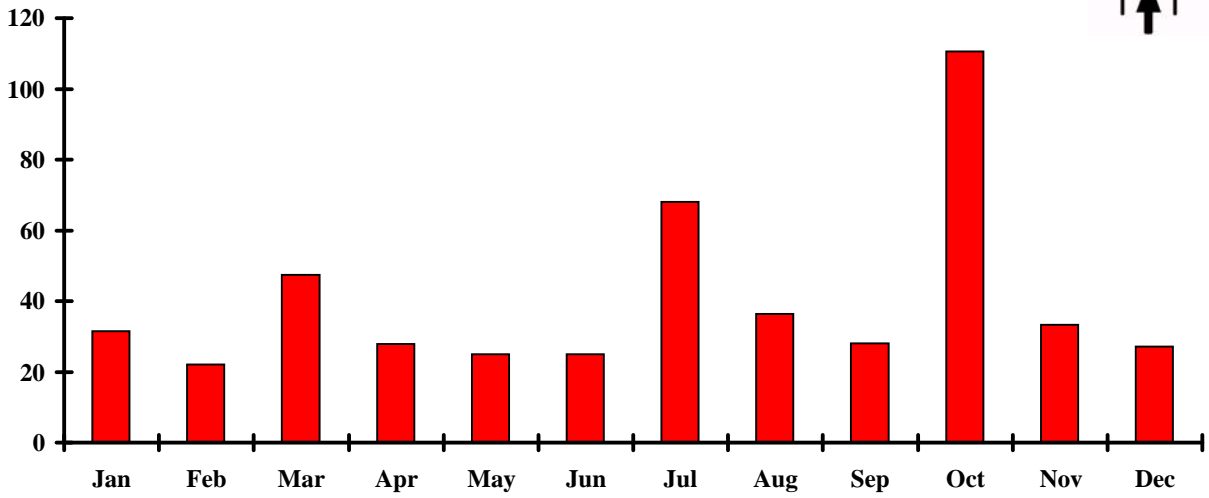
### Salt vs Month



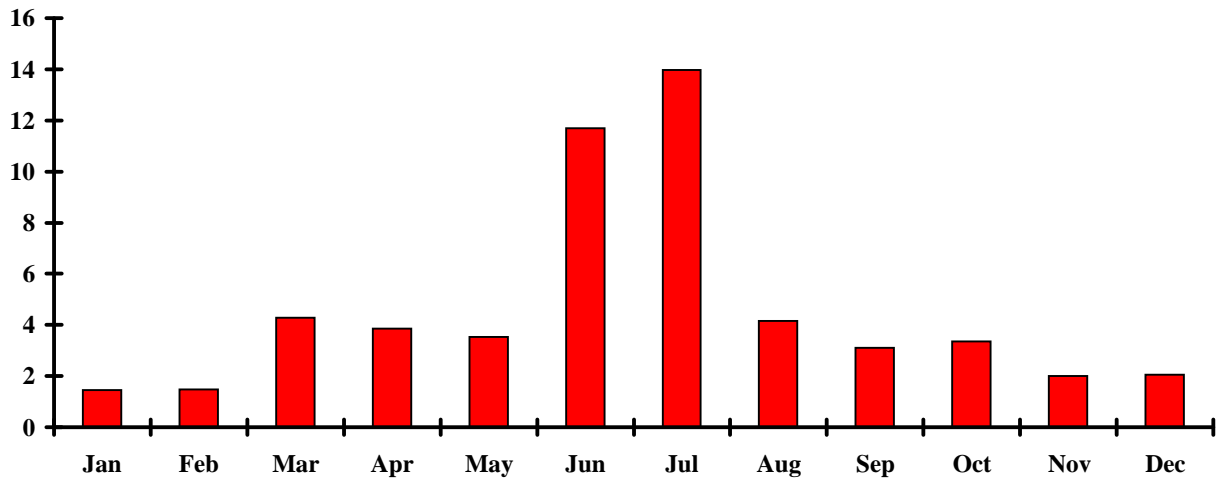


2003

**Iron vs Month**



**Zinc vs Month**



**Lead vs Month**

