

MONTHLY SUMMARY SHEET



Summary Sheet For Sites :- Mascot ASP23

Absolute Values (ng/m³)

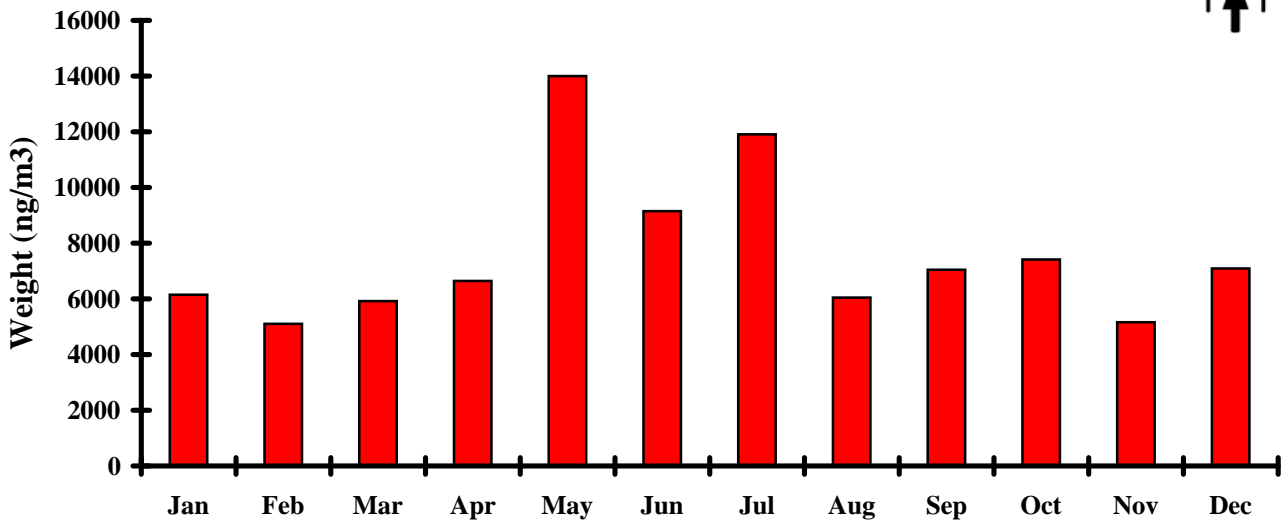
2008	Weight	NHSO4	Organ.	Soil	Elt. C.	Salt	K	Fe	Zn	Pb
Jan	6152	2253	147	189	769	1498	29	31	3	12
Feb	5105	1363	493	275	1136	1081	24	54	9	7
Mar	5923	1785	384	349	1043	1286	33	64	9	7
Apr	6649	1297	1581	408	1437	832	39	82	12	9
May	14005	2184	4207	926	2511	654	90	223	36	25
Jun	9150	1210	2684	591	1962	1036	69	145	35	63
Jul	11914	1026	4431	790	2666	681	102	171	31	25
Aug	6045	929	1422	387	1566	566	44	87	15	8
Sep	7049	1376	787	515	1095	1729	54	72	7	9
Oct	7417	2873	576	303	1022	1128	38	53	5	7
Nov	5164	1508	114	199	775	1439	28	31	7	2
Dec	7094	2332	213	499	868	1890	46	58	10	4
Average	7639	1678	1420	453	1404	1152	50	89	15	15
Stan Dev	2747	605	1546	227	653	430	25	60	12	17
Minimum	1745	336	0	62	253	0	5	11	1	0
Site : Date	23:14/12	23:2/7	23:2/1	23:5/10	23:31/12	23:30/3	23:14/12	23:26/11	23:5/10	23:9/1
Maximum	26188	5253	9956	2032	4525	3212	252	439	91	399
Site : Date	23:25/5	23:26/10	23:29/6	23:28/5	23:16/7	23:21/9	23:29/6	23:28/5	23:14/5	23:29/6

Relative Percentages (%)

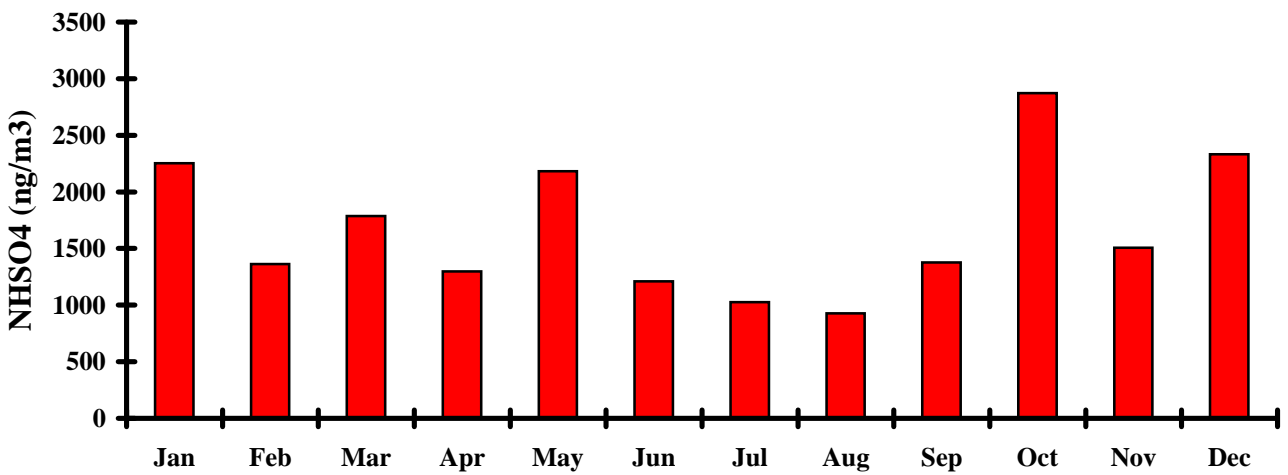
2008		NHSO4 %	Organ. %	Soil %	Elt. C. %	Salt %	RCMA %	
Jan		37	2	3	13	24	79	
Feb		27	10	5	22	21	85	
Mar		30	6	6	18	22	82	
Apr		20	24	6	22	13	85	
May		16	30	7	18	5	77	
Jun		13	29	6	21	11	84	
Jul		9	37	7	22	6	81	
Aug		15	24	6	26	9	82	
Sep		20	11	7	16	25	80	
Oct		39	8	4	14	15	80	
Nov		29	2	4	15	28	78	
Dec		33	3	7	12	27	83	
Average		24	16	6	18	17	81	
Stan Dev		10	12	1	4	8	3	
Minimum		4	0	1	3	0		
Site : Date		23:2/7	23:2/1	23:5/10	23:31/12	23:30/3		
Maximum		69	130	27	59	42		
Site : Date		23:26/10	23:29/6	23:28/5	23:16/7	23:21/9		



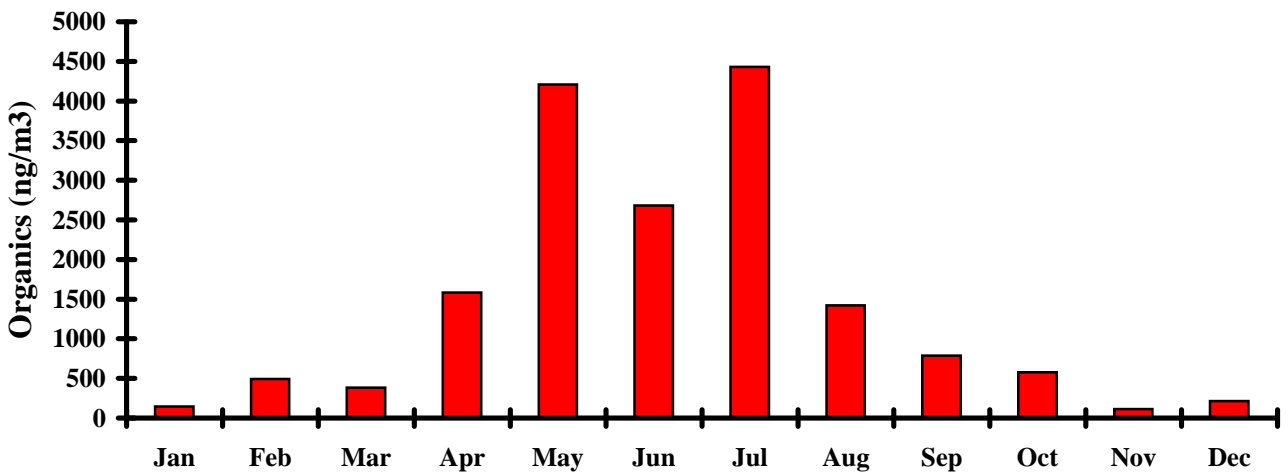
Weight vs Month



Ammonium Sulphate vs Month

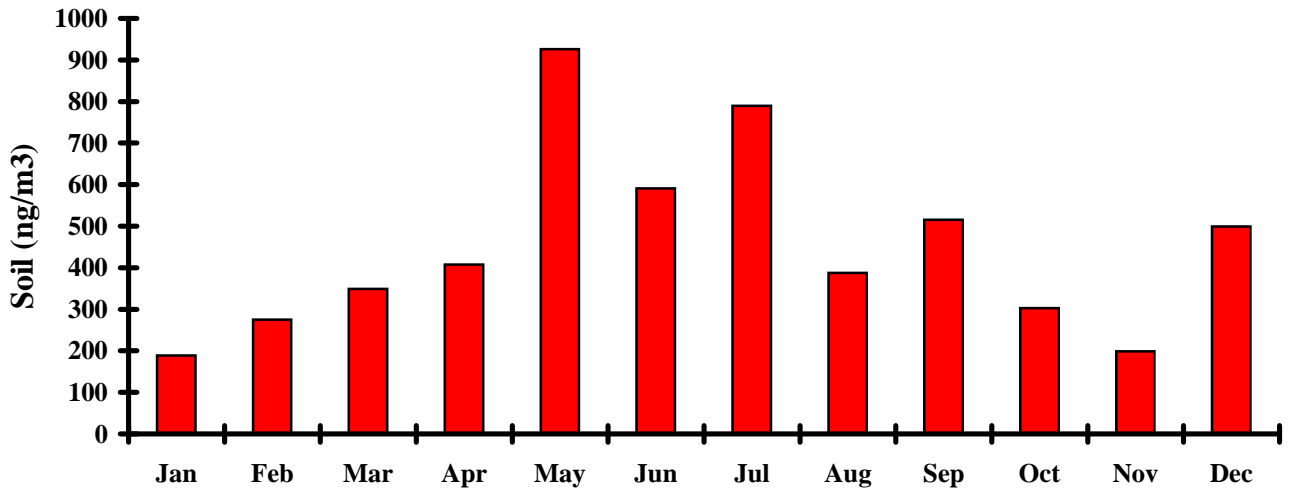


Organics vs Month

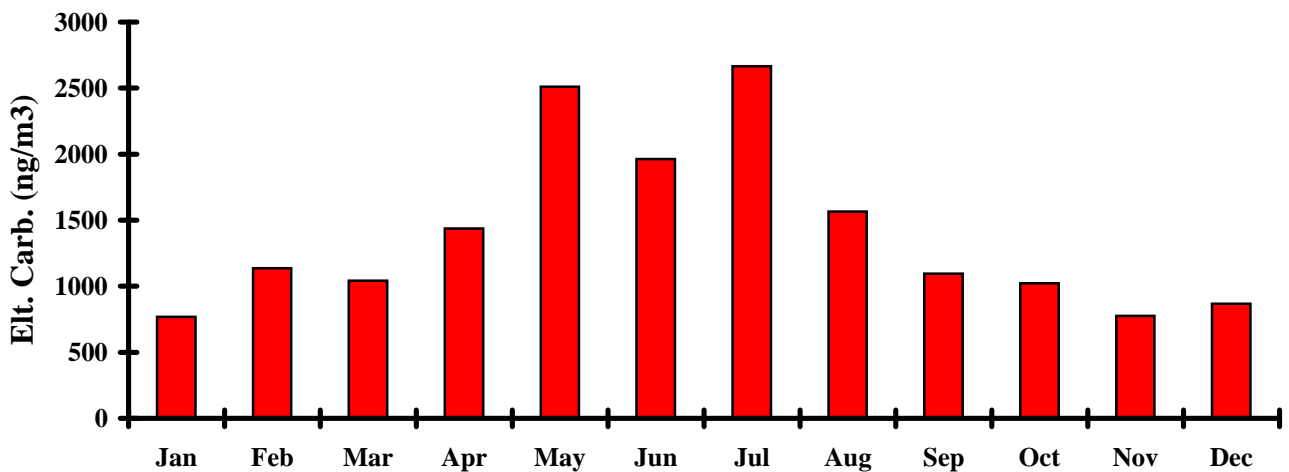




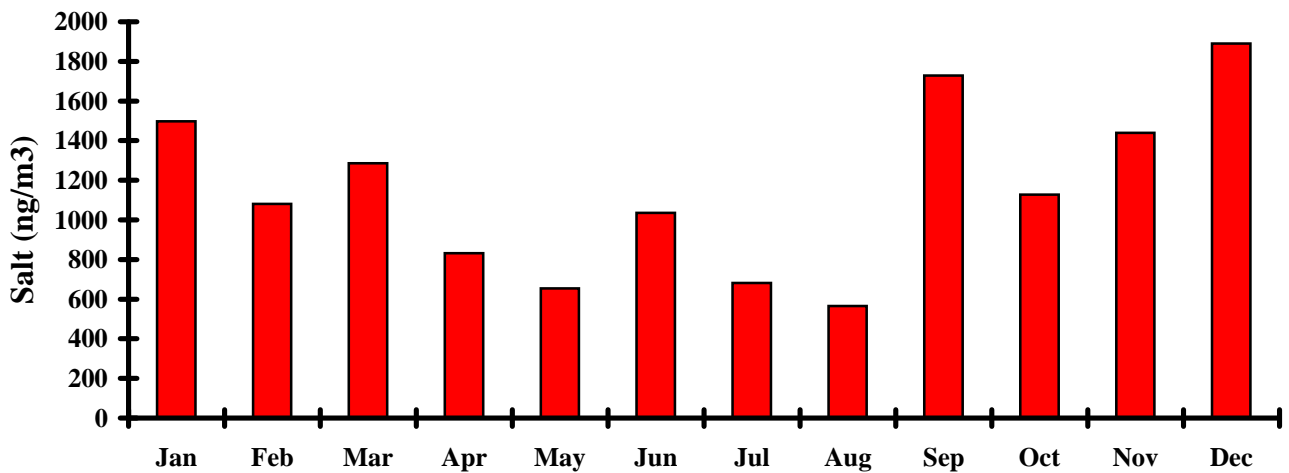
Soil vs Month



Elemental Carbon vs Month

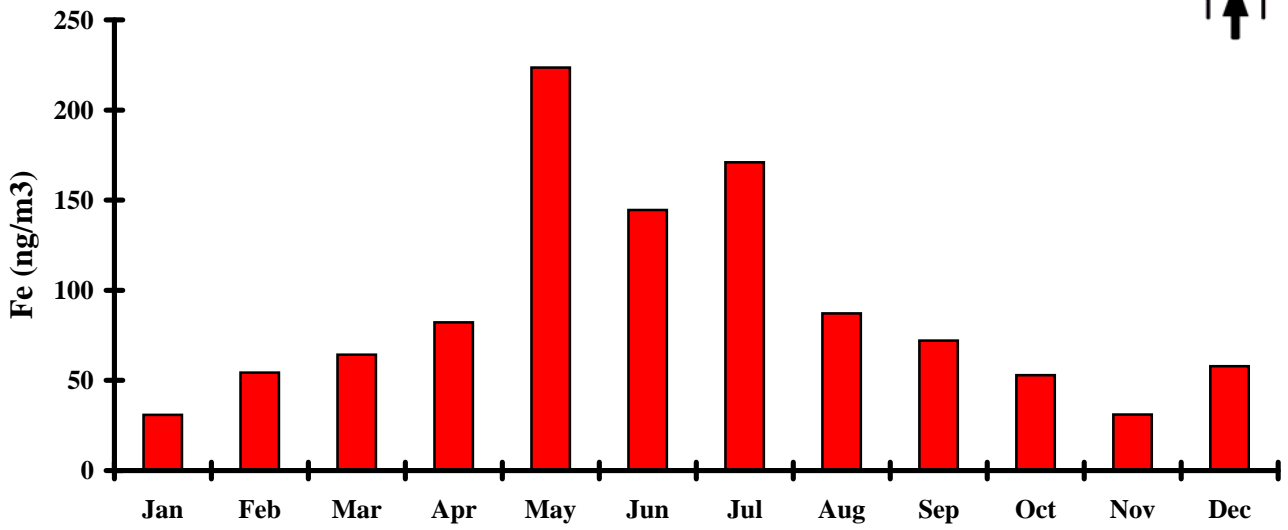


Salt vs Month

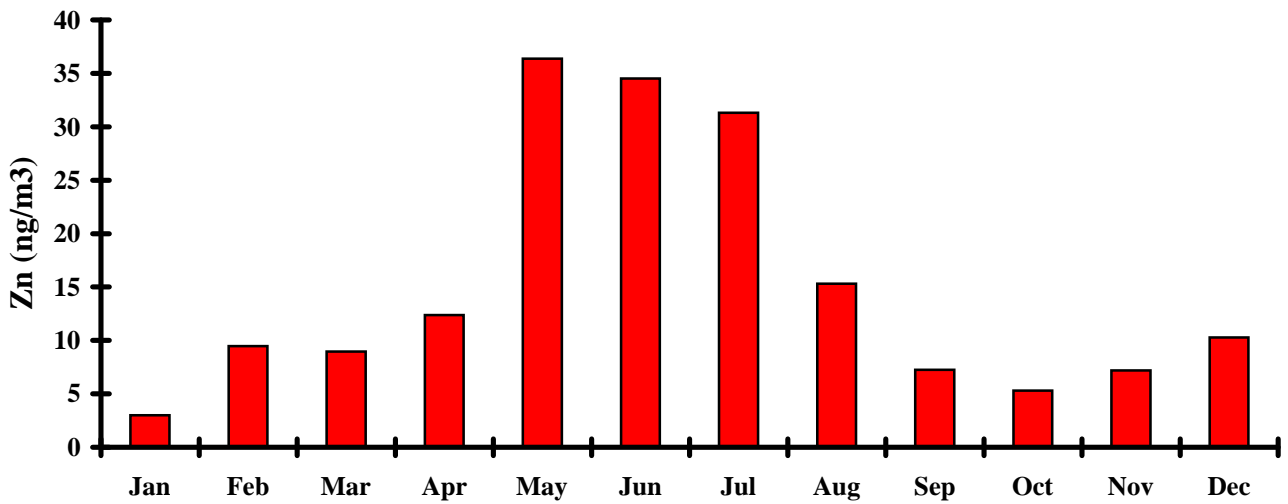




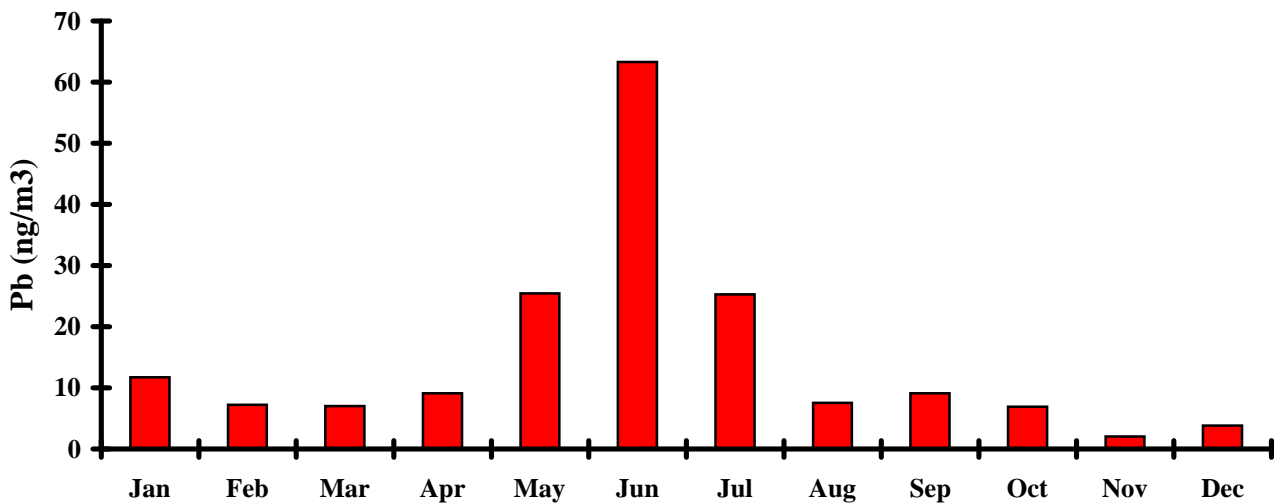
Iron vs Month

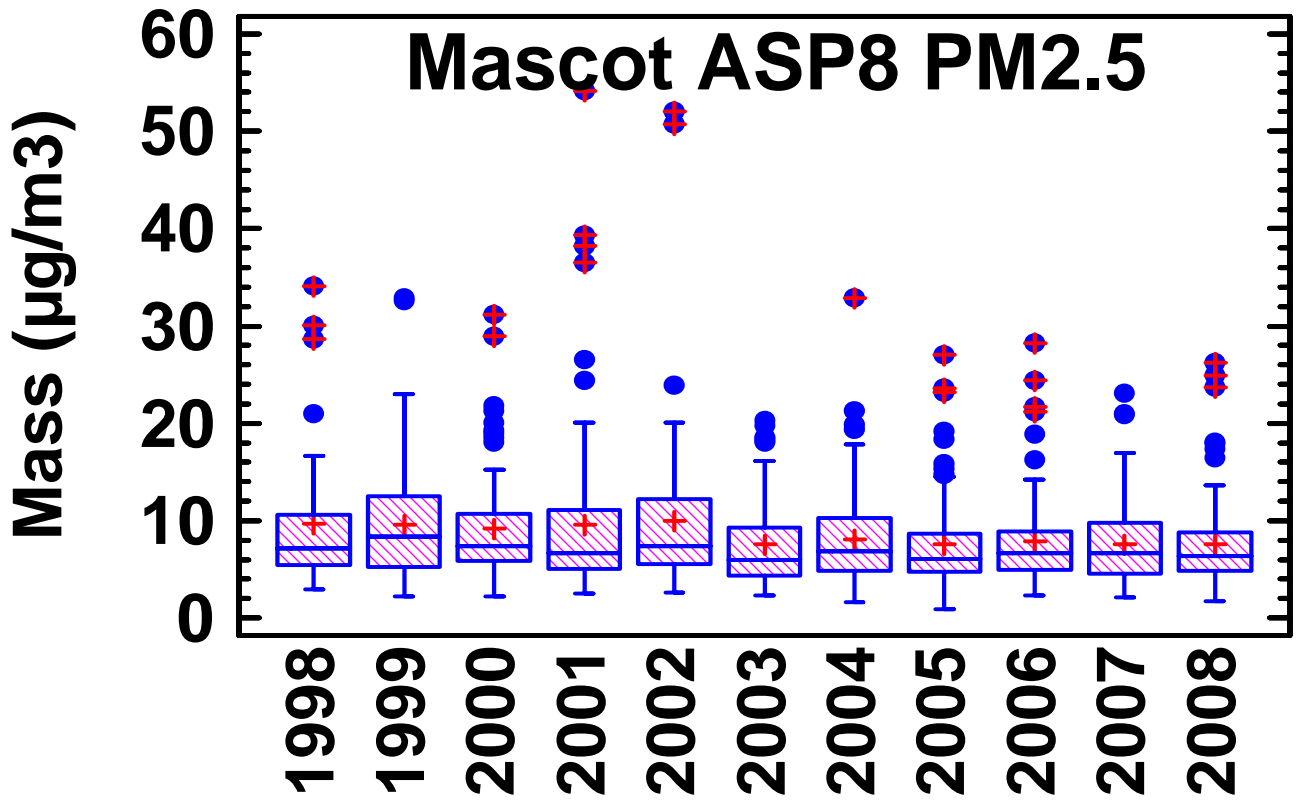


Zinc vs Month



Lead vs Month





Box and whisker plot of the 24 hour PM2.5 Mass for each year from 1998 to 2008

The (+) are the annual averages

The horizontal bars are the annual median value

The boxes contain 25% to 75% of the data for that year

The whiskers on each box represent the size of the distribution for that year

The dots are extreme and outlier events for that year