

MONTHLY SUMMARY SHEET



Summary Sheet For Sites :- Warrawong ASP 8

Absolute Values (ng/m³)

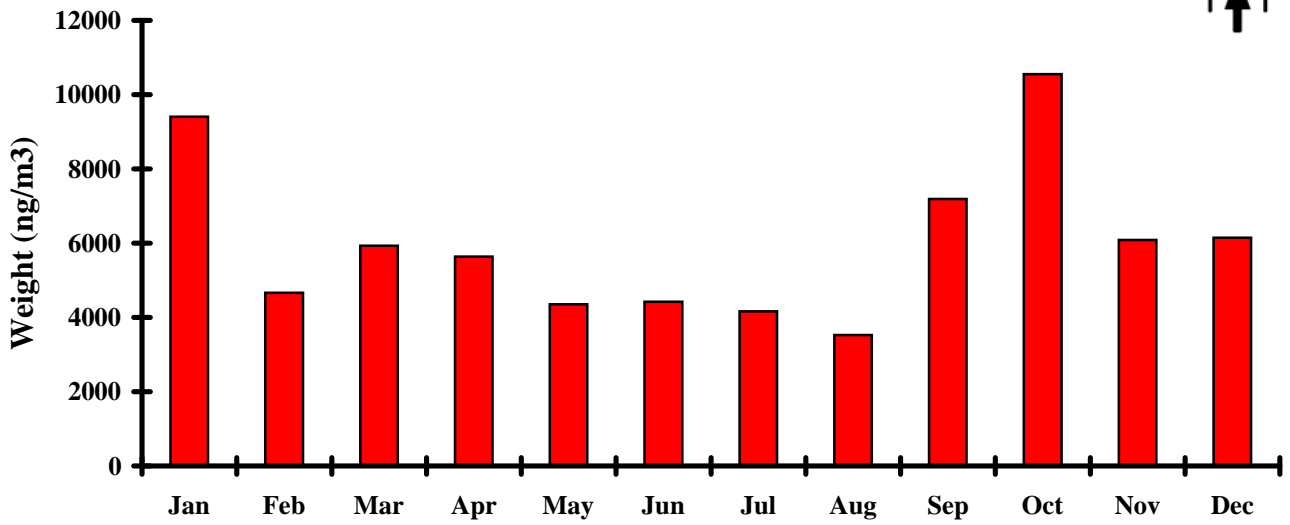
2008	Weight	NHSO4	Organ.	Soil	Elt. C.	Salt	K	Fe	Zn	Pb
Jan	9406	3882	8	1267	868	1554	82	385	49	13
Feb	4663	1623	103	388	585	1082	28	101	15	4
Mar	5927	2170	119	616	634	1322	47	155	17	3
Apr	5642	1396	777	660	720	762	42	175	18	6
May	4352	1475	576	245	648	496	28	58	10	5
Jun	4424	1165	458	724	702	669	46	218	24	4
Jul	4168	891	645	488	727	621	43	131	17	7
Aug	3527	1081	285	529	563	578	37	170	22	3
Sep	7187	1698	122	1015	691	1885	69	276	54	9
Oct	10552	4641	246	1249	1091	1046	62	343	25	11
Nov	6088	2024	20	760	674	1234	36	209	22	6
Dec	6148	2374	52	556	618	1341	35	134	15	2
Average	6007	2035	284	708	710	1049	46	196	24	6
Stan Dev	2140	1141	266	321	144	436	17	97	14	3
Minimum	1158	198	0	47	136	0	2	4	0	0
Site : Date	8:23/11	8:9/7	8:2/1	8:10/2	8:23/11	8:7/5	8:14/12	8:16/11	8:23/11	8:17/2
Maximum	28536	14233	2232	5583	2967	3908	193	1551	163	36
Site : Date	8:19/10	8:19/10	8:13/4	8:26/10	8:19/10	8:21/9	8:26/10	8:26/10	8:7/9	8:26/10

Relative Percentages (%)

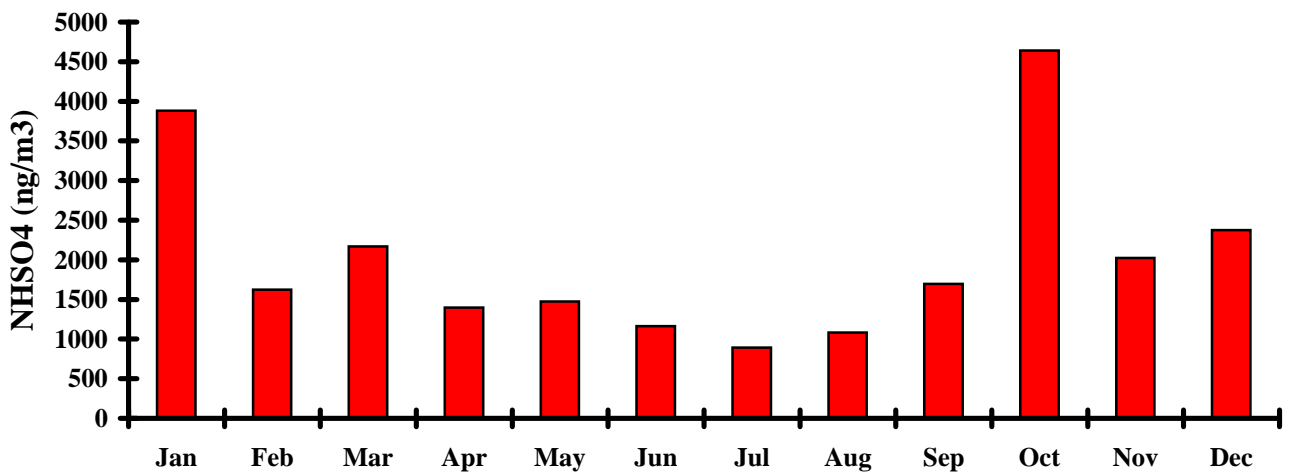
2008		NHSO4 %	Organ. %	Soil %	Elt. C. %	Salt %	RCMA %	
Jan		41	0	13	9	17	78	
Feb		35	2	8	13	23	80	
Mar		37	2	10	11	22	81	
Apr		25	14	12	13	14	76	
May		34	13	6	15	11	78	
Jun		26	10	16	16	15	79	
Jul		21	15	12	17	15	80	
Aug		31	8	15	16	16	83	
Sep		24	2	14	10	26	74	
Oct		44	2	12	10	10	80	
Nov		33	0	12	11	20	72	
Dec		39	1	9	10	22	79	
Average		32	6	12	13	18	78	
Stan Dev		7	6	3	3	5	3	
Minimum		3	0	1	2	0		
Site : Date		8:9/7	8:2/1	8:10/2	8:23/11	8:7/5		
Maximum		237	37	93	49	65		
Site : Date		8:19/10	8:13/4	8:26/10	8:19/10	8:21/9		



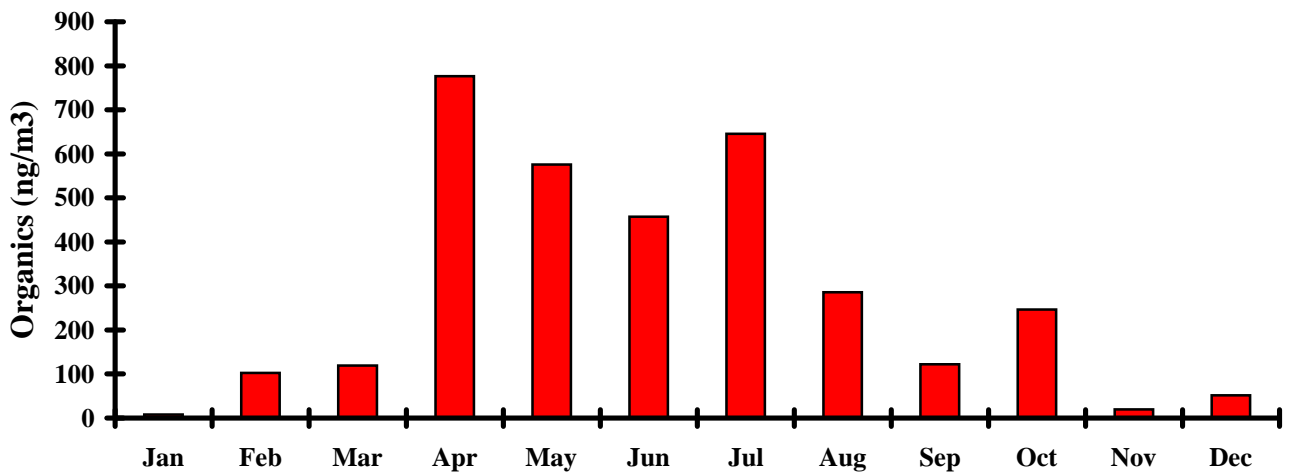
Weight vs Month



Ammonium Sulphate vs Month

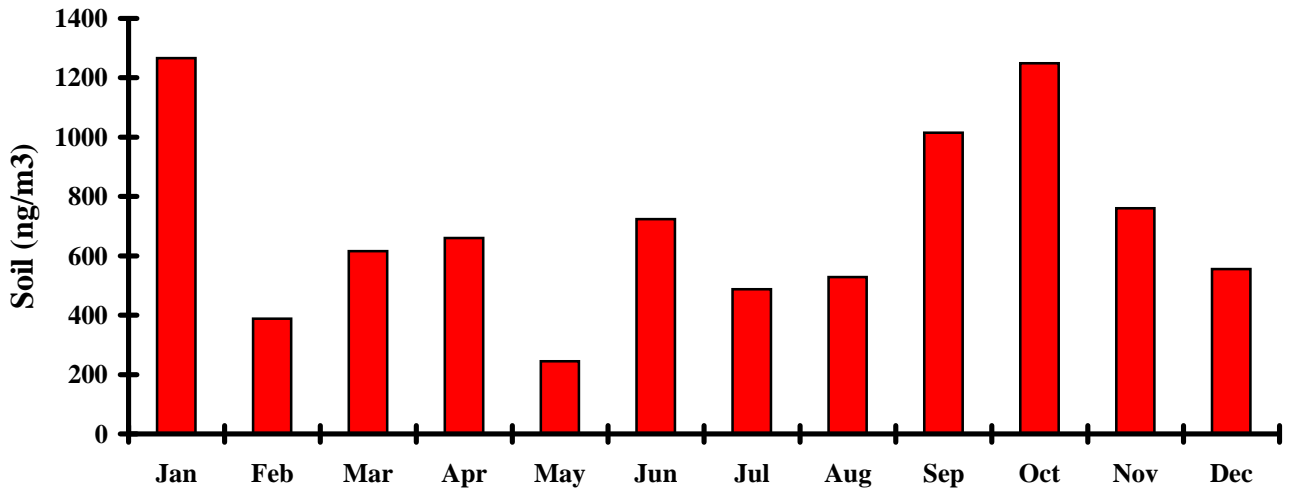


Organics vs Month

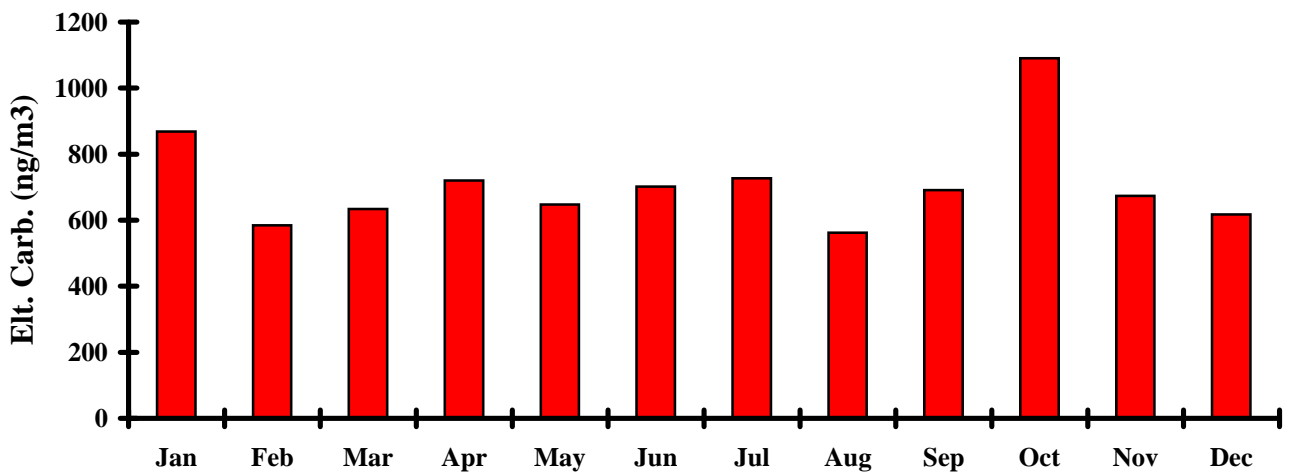




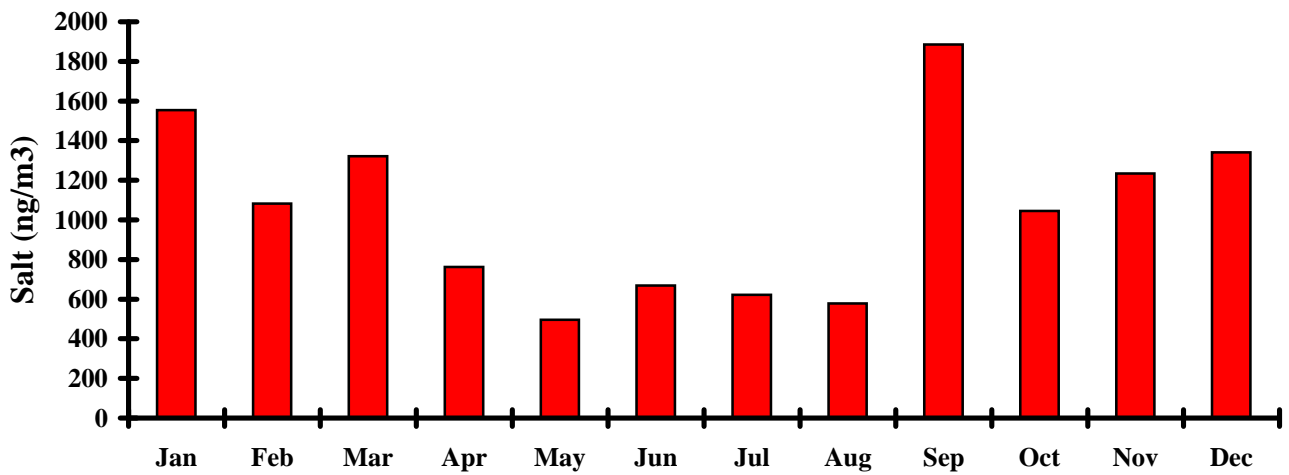
Soil vs Month



Elemental Carbon vs Month

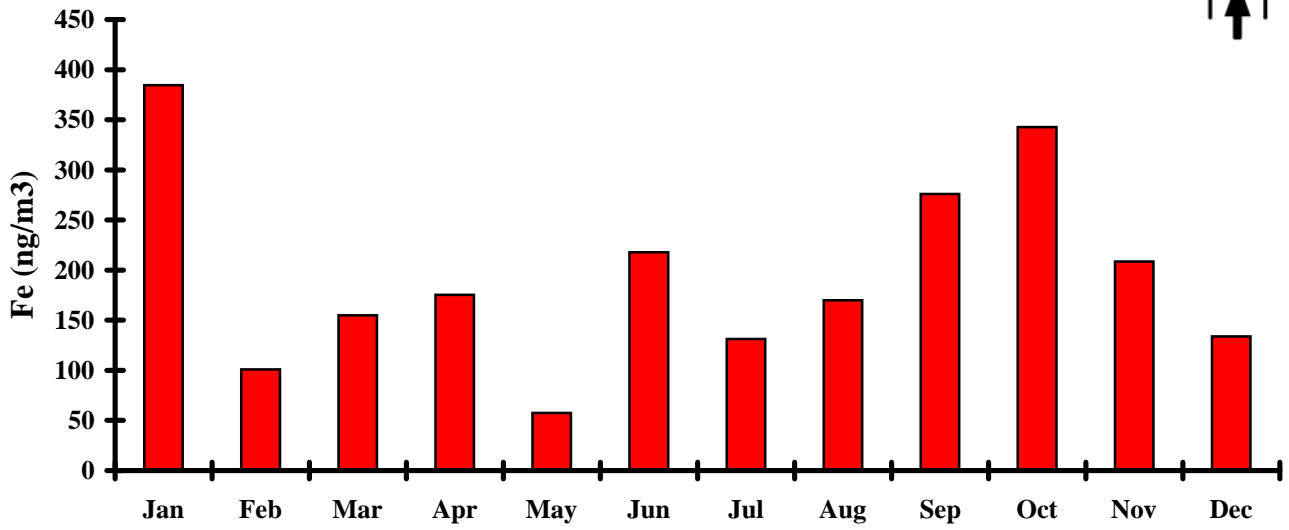


Salt vs Month

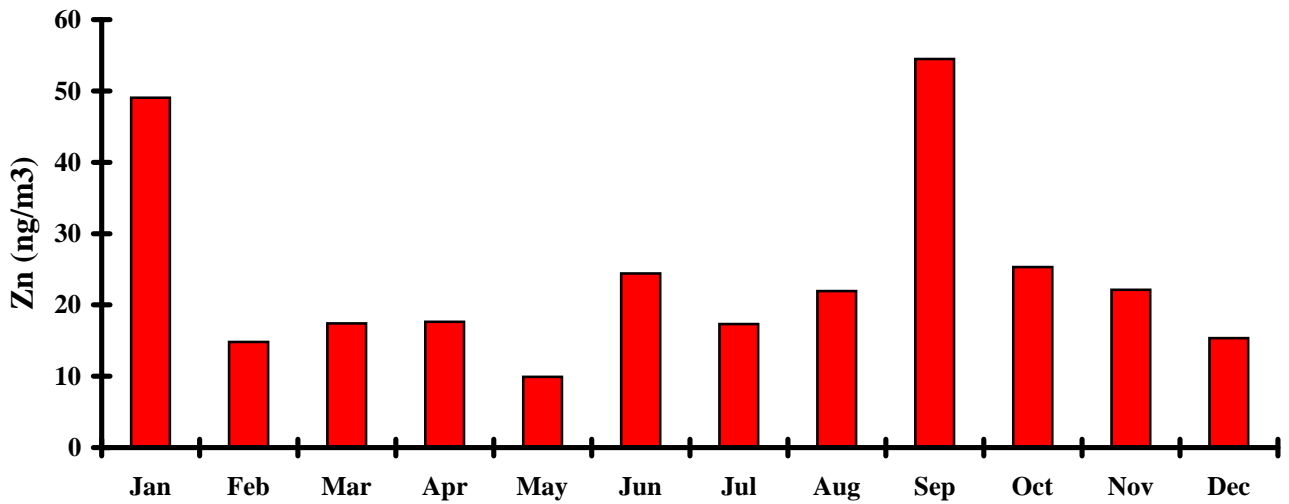




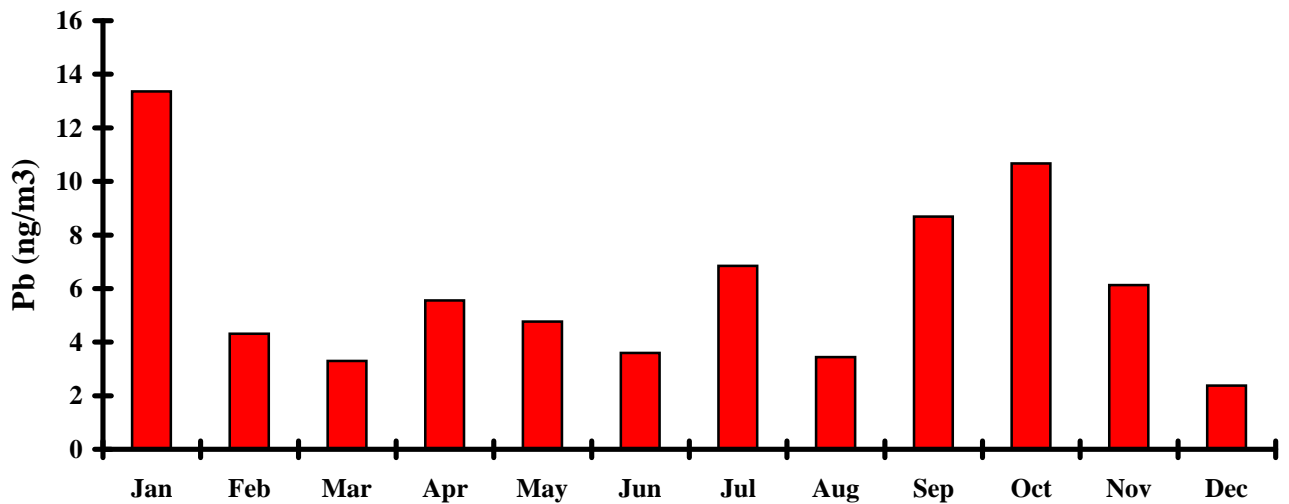
Iron vs Month

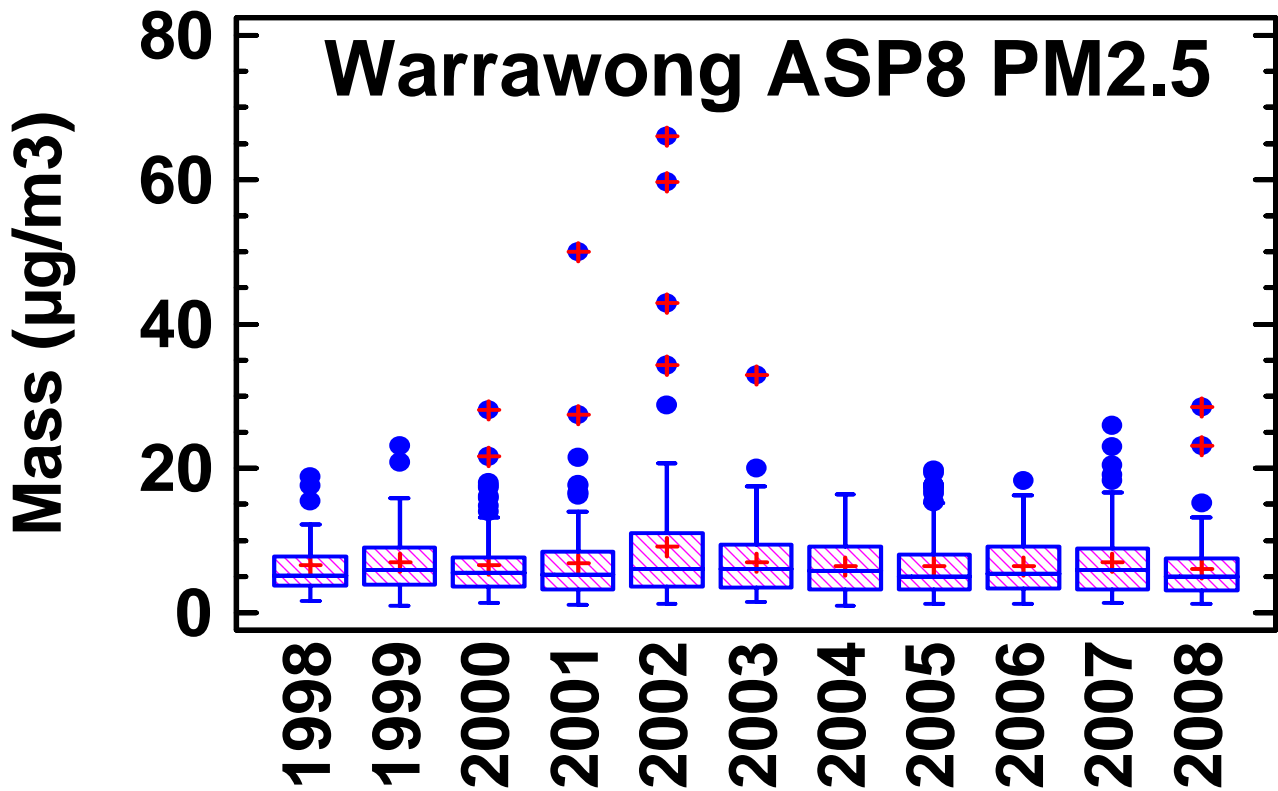


Zinc vs Month



Lead vs Month





Box and whisker plot of the 24 hour PM2.5 Mass for each year from 1998 to 2008
 The (+) are the annual averages
 The horizontal bars are the annual median value
 The boxes contain 25% to 75% of the data for that year
 The whiskers on each box represent the size of the distribution for that year
 The dots are extreme and outlier events for that year