

## MONTHLY SUMMARY SHEET



Summary Sheet For Sites :- Muswellbrook ASP40

**NOTE: 23/09/2009 data is NOT included in September dataset.**Absolute Values (ng/m<sup>3</sup>)

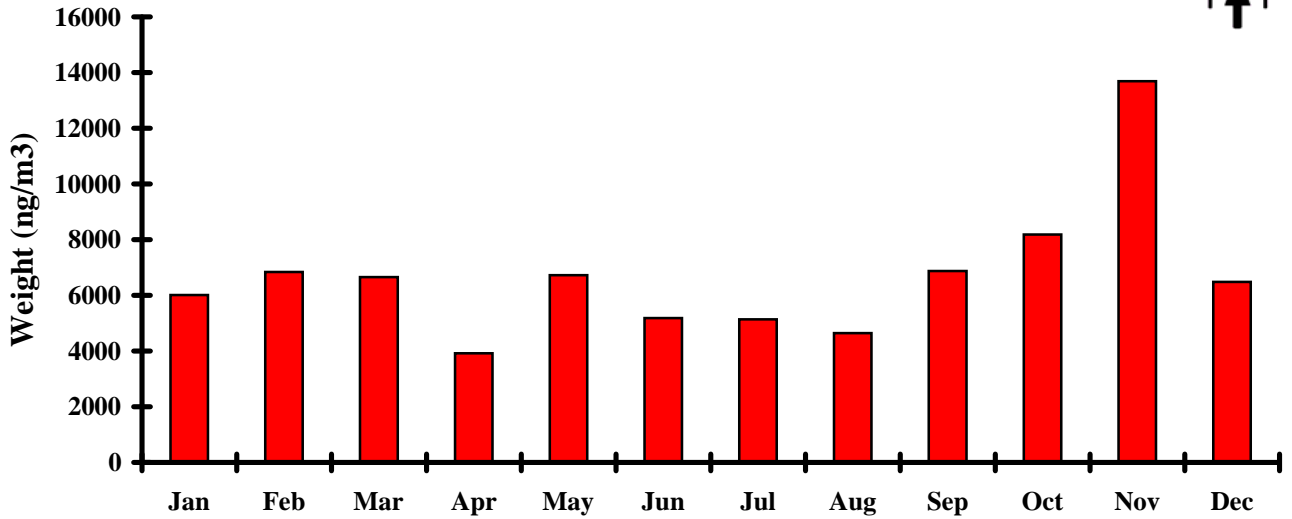
| 2009        | Weight   | NHSO4   | Organ.   | Soil     | Elt. C. | Salt    | K        | Fe       | Zn      | Pb     |
|-------------|----------|---------|----------|----------|---------|---------|----------|----------|---------|--------|
| Jan         | 6012     | 2216    | 486      | 563      | 624     | 1215    | 35       | 38       | 1       | 3      |
| Feb         | 6838     | 2358    | 983      | 505      | 759     | 606     | 45       | 36       | 2       | 4      |
| Mar         | 6657     | 2440    | 781      | 916      | 787     | 457     | 46       | 61       | 3       | 4      |
| Apr         | 3919     | 1041    | 587      | 327      | 556     | 451     | 25       | 31       | 2       | 3      |
| May         | 6728     | 1410    | 1573     | 397      | 939     | 674     | 38       | 40       | 3       | 4      |
| Jun         | 5180     | 964     | 1623     | 270      | 952     | 104     | 28       | 29       | 3       | 5      |
| Jul         | 5142     | 437     | 1647     | 1015     | 839     | 62      | 49       | 74       | 3       | 2      |
| Aug         | 4646     | 511     | 1500     | 597      | 730     | 218     | 46       | 50       | 13      | 3      |
| Sep         | 6879     | 1353    | 1992     | 790      | 848     | 77      | 61       | 56       | 3       | 2      |
| Oct         | 8184     | 1985    | 941      | 2743     | 442     | 302     | 85       | 188      | 2       | 2      |
| Nov         | 13686    | 2124    | 1888     | 5446     | 385     | 248     | 161      | 378      | 3       | 1      |
| Dec         | 6484     | 2271    | 680      | 829      | 657     | 396     | 40       | 51       | 4       | 1      |
| Average     | 6696     | 1592    | 1223     | 1200     | 710     | 401     | 55       | 86       | 3       | 3      |
| Stan Dev    | 2491     | 732     | 535      | 1488     | 182     | 325     | 37       | 101      | 3       | 1      |
| Minimum     | 1446     | 157     | 0        | 43       | 0       | 0       | 8        | 3        | 0       | 0      |
| Site : Date | 40:10/6  | 40:28/6 | 40:25/1  | 40:10/6  | 40:23/9 | 40:15/2 | 40:15/2  | 40:10/6  | 40:21/1 | 40:1/3 |
| Maximum     | 41397    | 6088    | 5303     | 26328    | 1536    | 3572    | 717      | 1956     | 90      | 10     |
| Site : Date | 40:29/11 | 40:16/9 | 40:22/11 | 40:29/11 | 40:3/6  | 40:25/1 | 40:29/11 | 40:29/11 | 40:2/8  | 40:8/3 |

Relative Percentages (%)

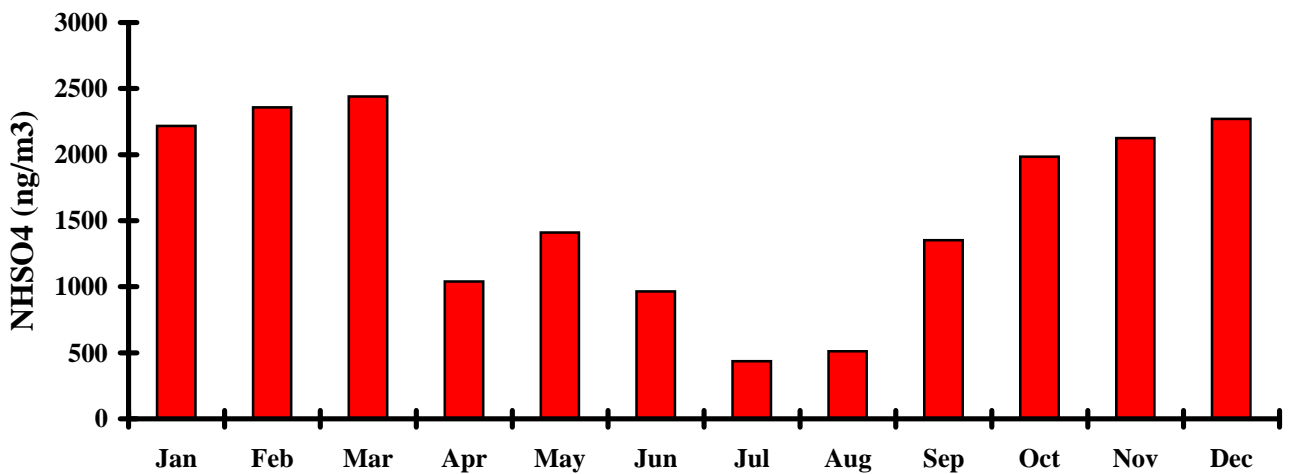
| 2009        |  | NHSO4 % | Organ. % | Soil %   | Elt. C. % | Salt %  | RCMA % |  |
|-------------|--|---------|----------|----------|-----------|---------|--------|--|
| Jan         |  | 37      | 8        | 9        | 10        | 20      | 84     |  |
| Feb         |  | 34      | 14       | 7        | 11        | 9       | 75     |  |
| Mar         |  | 37      | 12       | 14       | 12        | 7       | 82     |  |
| Apr         |  | 27      | 15       | 8        | 14        | 12      | 76     |  |
| May         |  | 21      | 23       | 6        | 14        | 10      | 75     |  |
| Jun         |  | 19      | 31       | 5        | 18        | 2       | 74     |  |
| Jul         |  | 8       | 32       | 20       | 16        | 1       | 77     |  |
| Aug         |  | 11      | 32       | 13       | 16        | 5       | 77     |  |
| Sep         |  | 20      | 29       | 11       | 12        | 1       | 73     |  |
| Oct         |  | 24      | 11       | 34       | 5         | 4       | 79     |  |
| Nov         |  | 16      | 14       | 40       | 3         | 2       | 76     |  |
| Dec         |  | 35      | 10       | 13       | 10        | 6       | 75     |  |
| Average     |  | 24      | 19       | 15       | 12        | 7       | 77     |  |
| Stan Dev    |  | 10      | 9        | 11       | 4         | 6       | 3      |  |
| Minimum     |  | 2       | 0        | 1        | 0         | 0       |        |  |
| Site : Date |  | 40:28/6 | 40:25/1  | 40:10/6  | 40:23/9   | 40:15/2 |        |  |
| Maximum     |  | 91      | 79       | 393      | 23        | 53      |        |  |
| Site : Date |  | 40:16/9 | 40:22/11 | 40:29/11 | 40:3/6    | 40:25/1 |        |  |



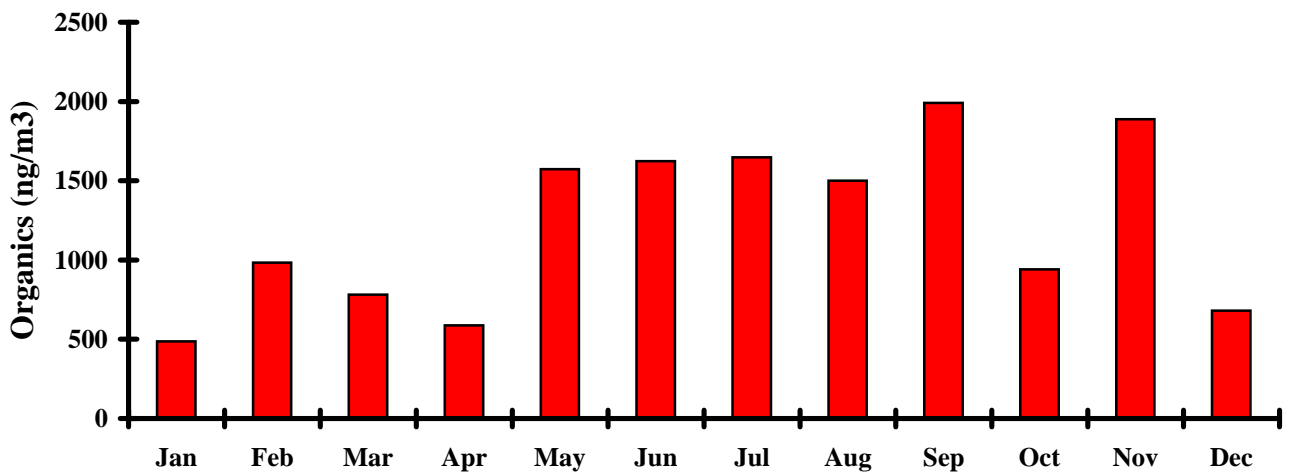
### Weight vs Month



### Ammonium Sulphate vs Month

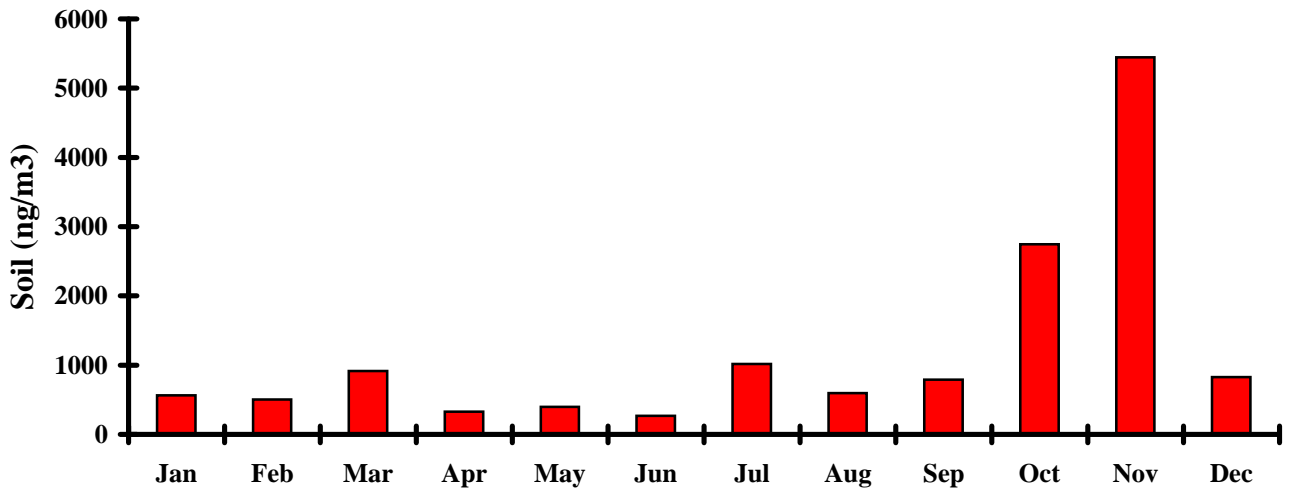


### Organics vs Month

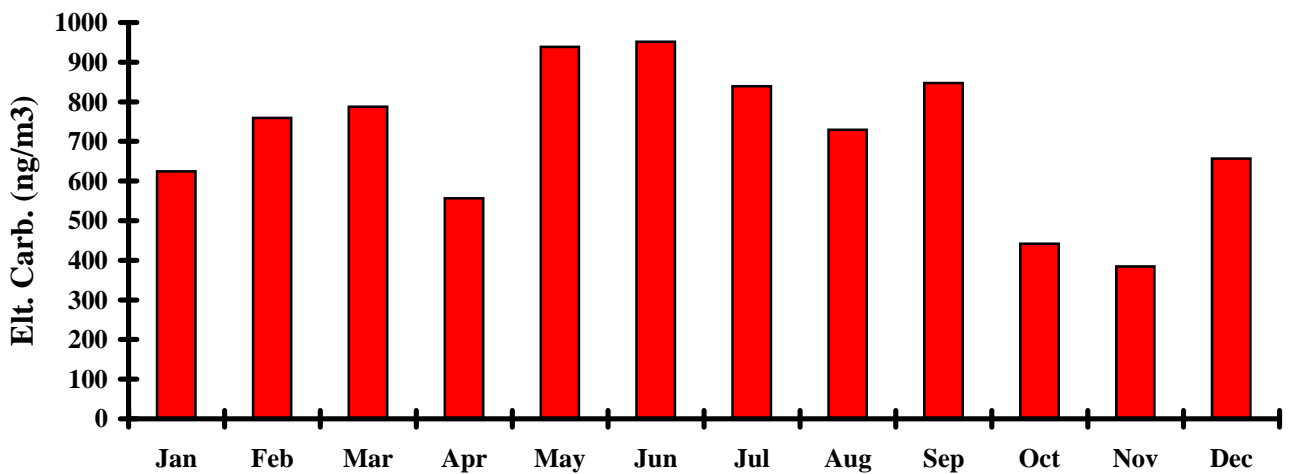




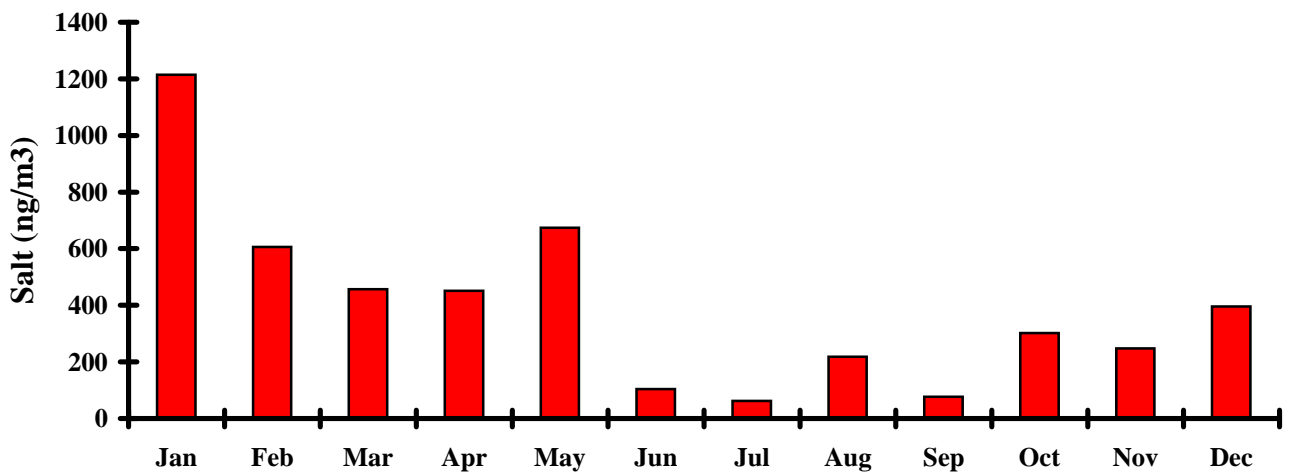
### Soil vs Month



### Elemental Carbon vs Month

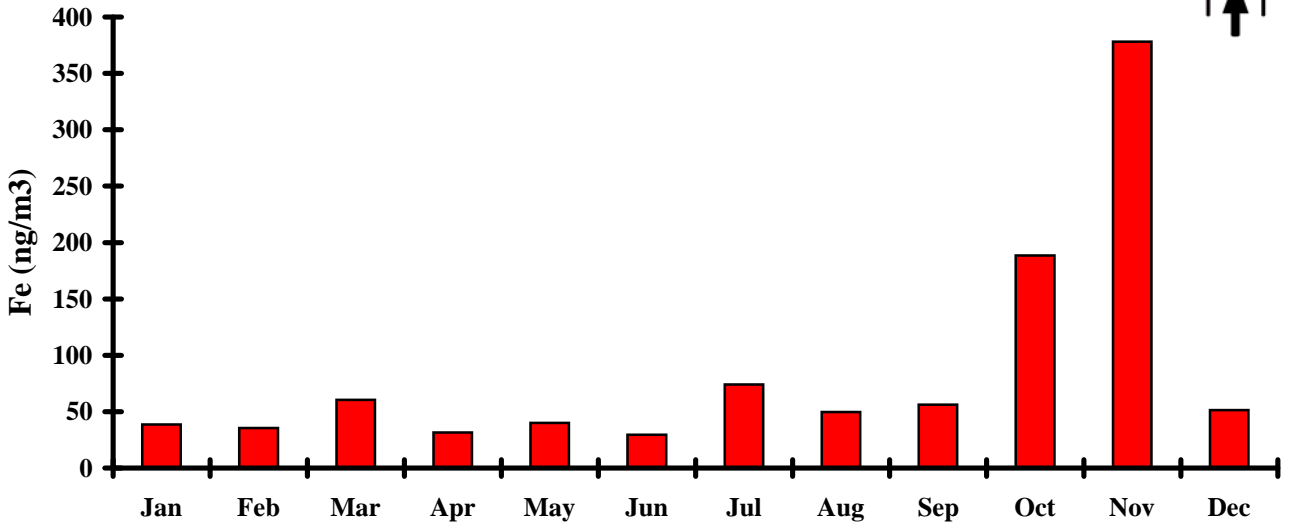


### Salt vs Month

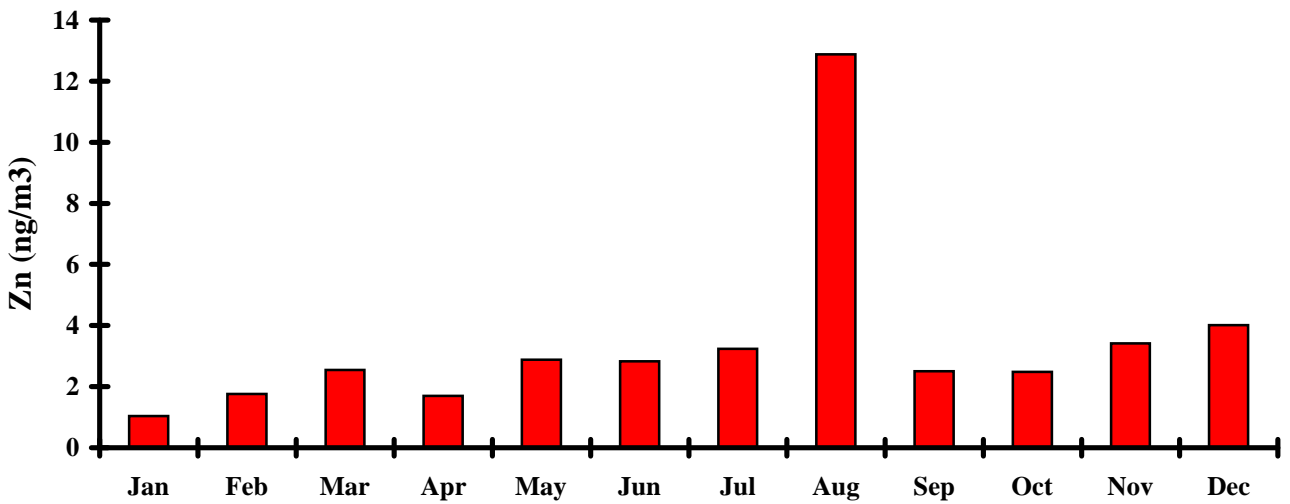




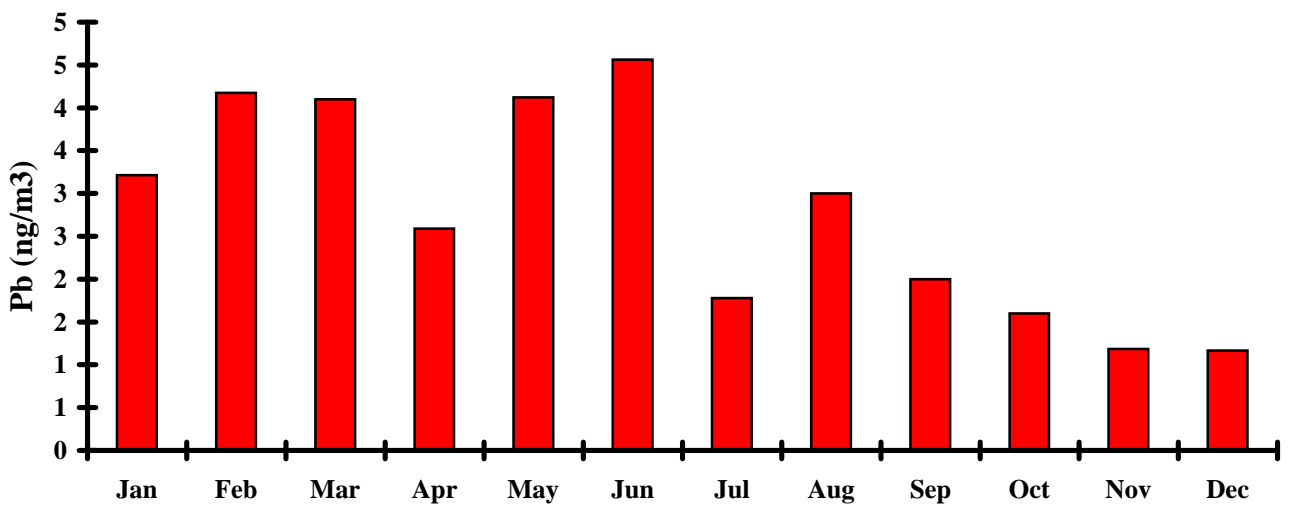
### Iron vs Month

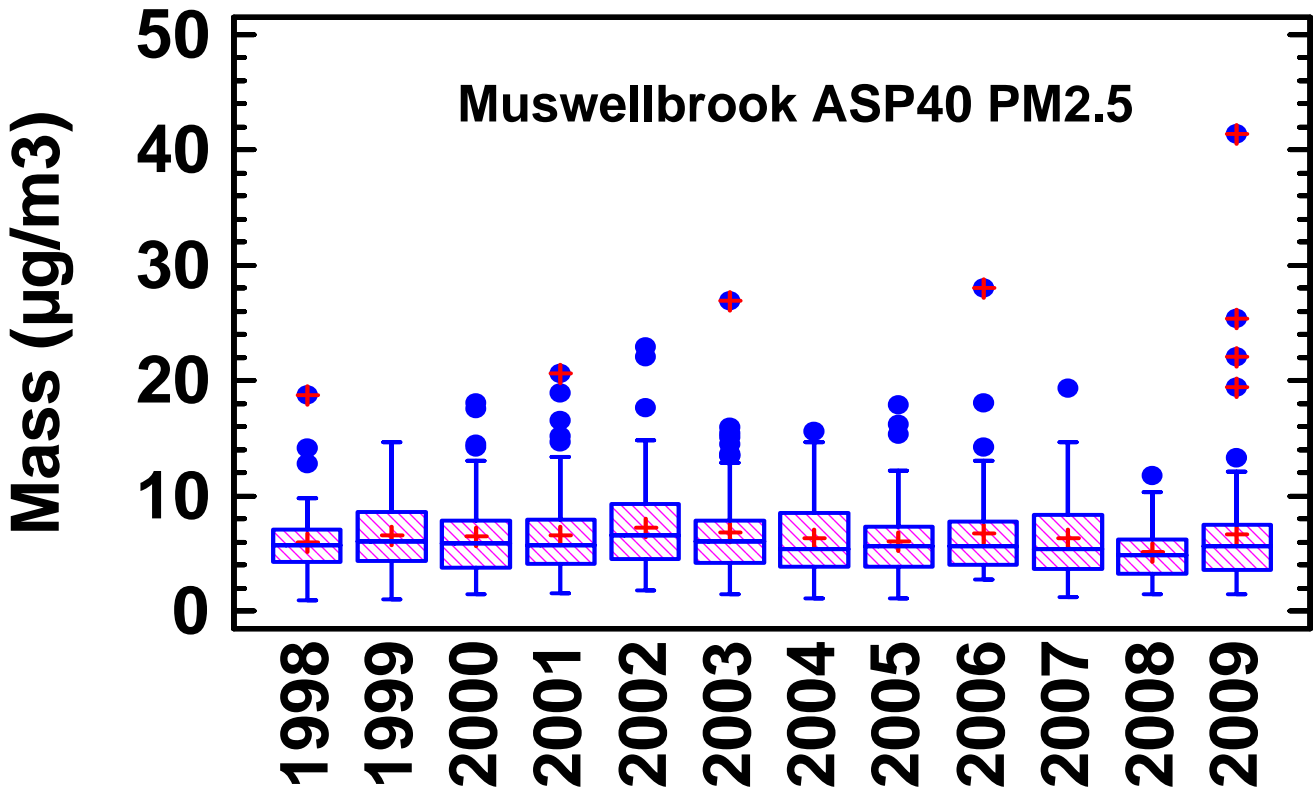


### Zinc vs Month



### Lead vs Month





Box and whisker plot of the 24 hour PM<sub>2.5</sub> Mass for each year from 1998 to 2009  
 The (+) are the annual averages  
 The horizontal bars are the annual median value  
 The boxes contain 25% to 75% of the data for that year  
 The whiskers on each box represent the size of the distribution for that year  
 The dots are extreme and outlier events for that year