

MONTHLY SUMMARY SHEET



Summary Sheet For Sites :- Muswellbrook ASP40

Absolute Values (ng/m3)

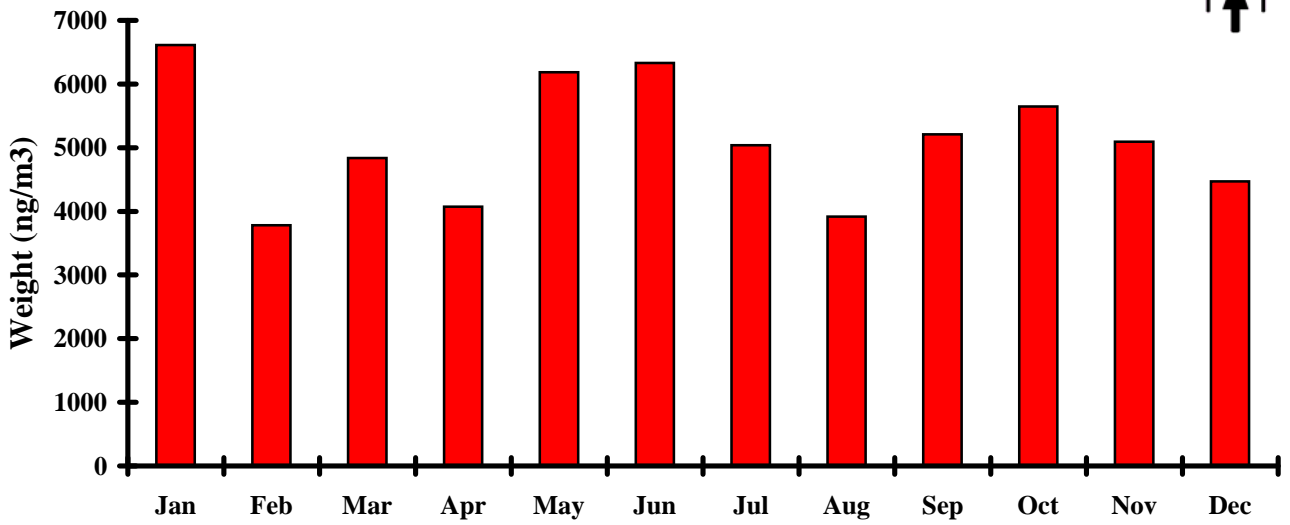
2008	Weight	NHSO4	Organ.	Soil	Elt. C.	Salt	K	Fe	Zn	Pb
Jan	6612	2857	430	372	576	809	25	25	1	1
Feb	3783	1344	330	303	623	510	21	24	1	2
Mar	4835	2014	289	442	587	455	26	37	3	2
Apr	4075	897	986	667	520	38	29	49	1	1
May	6184	1798	1325	531	666	114	42	43	4	3
Jun	6330	1348	1995	286	992	168	34	33	4	3
Jul	5037	562	1752	279	879	246	38	31	5	4
Aug	3916	636	1089	214	724	233	31	23	3	4
Sep	5209	1271	795	598	758	569	41	44	3	3
Oct	5649	2357	596	355	698	414	31	30	2	2
Nov	5095	1534	308	945	558	622	41	53	1	1
Dec	4470	1488	363	667	532	601	29	45	1	1
Average	5100	1509	855	471	676	398	32	36	2	2
Stan Dev	951	675	587	215	145	237	7	10	1	1
Minimum	1470	160	0	80	0	0	7	7	0	0
Site : Date	40:13/8	40:7/5	40:9/1	40:13/8	40:23/11	40:6/2	40:13/8	40:10/8	40:27/4	40:20/2
Maximum	11762	5921	3486	5683	1471	1880	162	294	9	9
Site : Date	40:25/5	40:24/12	40:15/6	40:23/11	40:8/6	40:9/1	40:23/11	40:23/11	40:6/7	40:31/8

Relative Percentages (%)

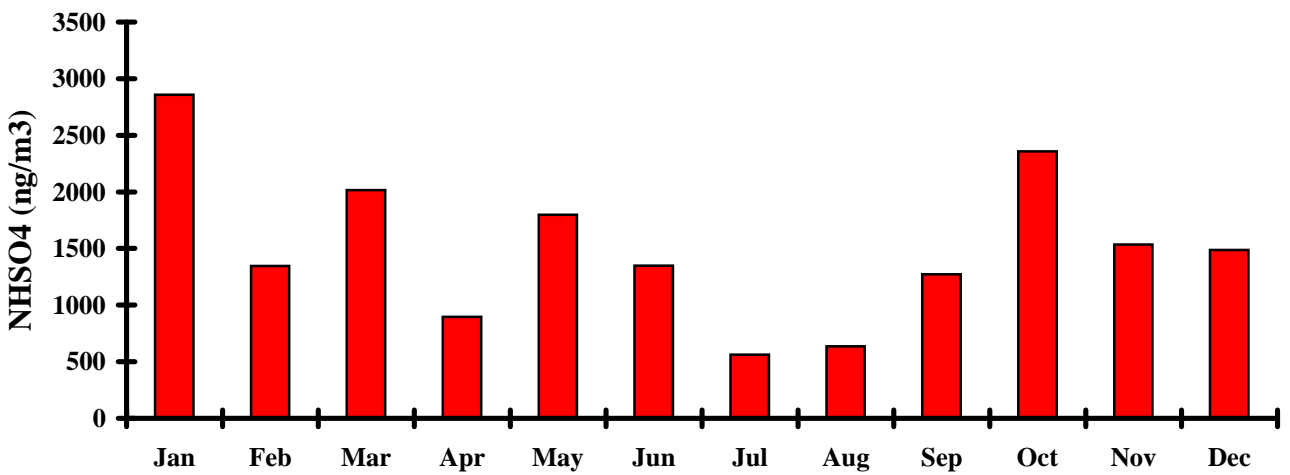
2008		NHSO4 %	Organ. %	Soil %	Elt. C. %	Salt %	RCMA %	
Jan		43	7	6	9	12	77	
Feb		36	9	8	16	13	81	
Mar		42	6	9	12	9	78	
Apr		22	24	16	13	1	75	
May		29	21	9	11	2	71	
Jun		21	32	5	16	3	76	
Jul		11	35	6	17	5	75	
Aug		16	28	5	18	6	76	
Sep		24	15	11	15	11	77	
Oct		42	11	6	12	7	78	
Nov		30	6	19	11	12	76	
Dec		33	8	15	12	13	80	
Average		29	17	10	14	8	77	
Stan Dev		10	11	5	3	5	3	
Minimum		3	0	2	0	0		
Site : Date		40:7/5	40:9/1	40:13/8	40:23/11	40:6/2		
Maximum		116	68	111	29	37		
Site : Date		40:24/12	40:15/6	40:23/11	40:8/6	40:9/1		



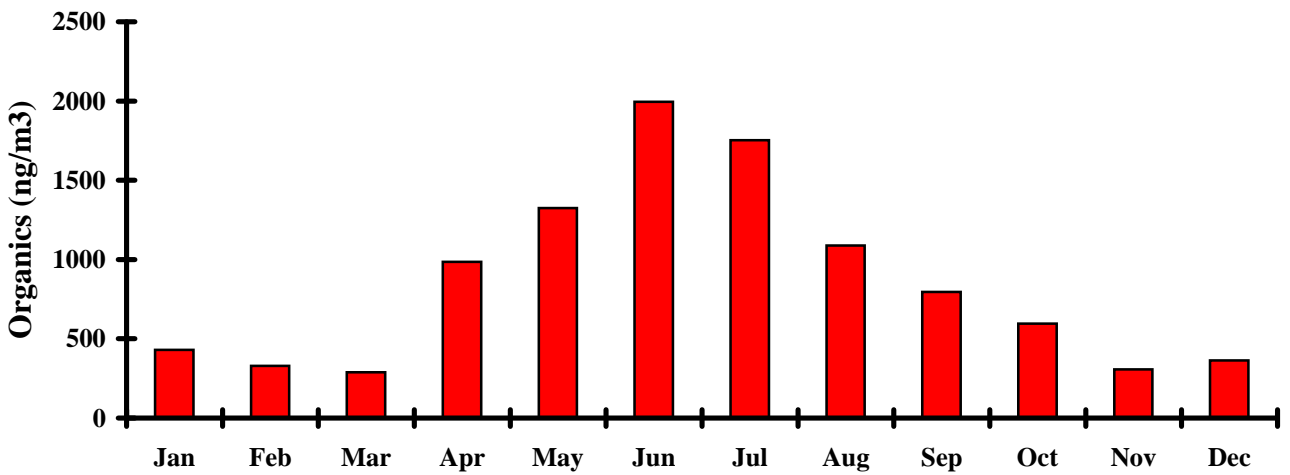
Weight vs Month



Ammonium Sulphate vs Month

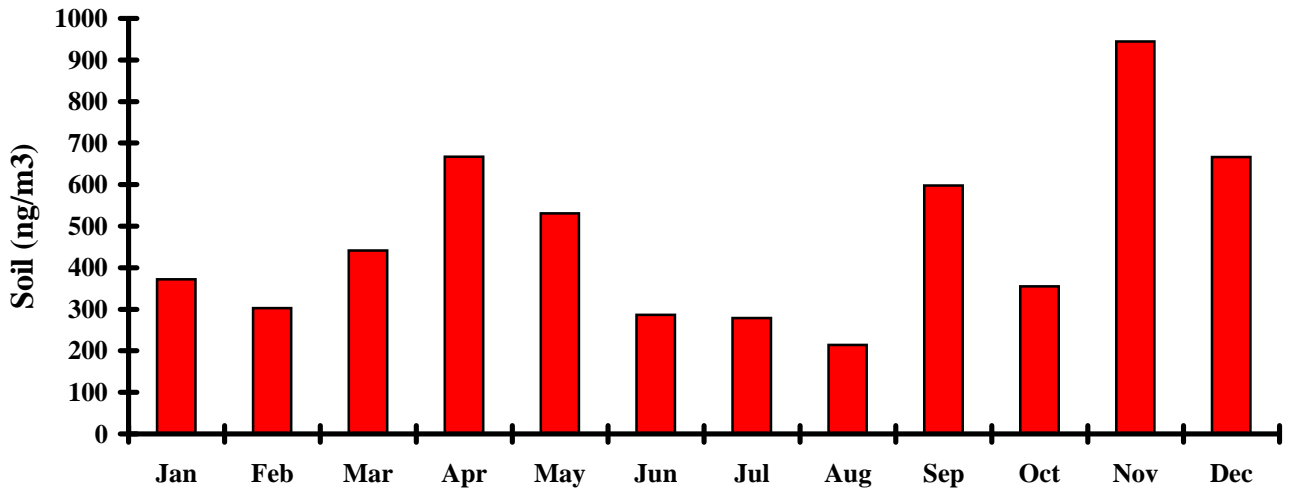


Organics vs Month

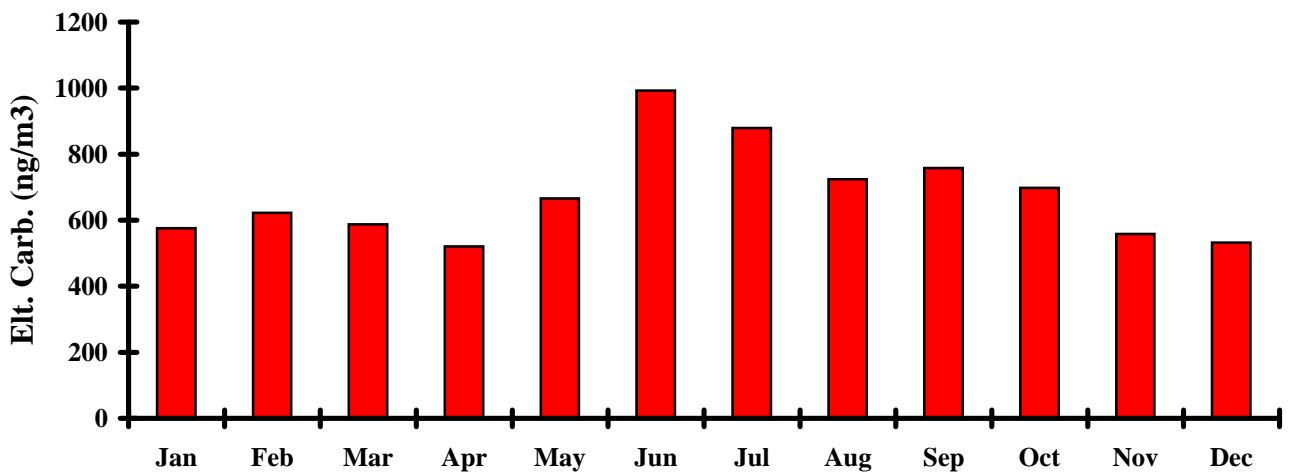




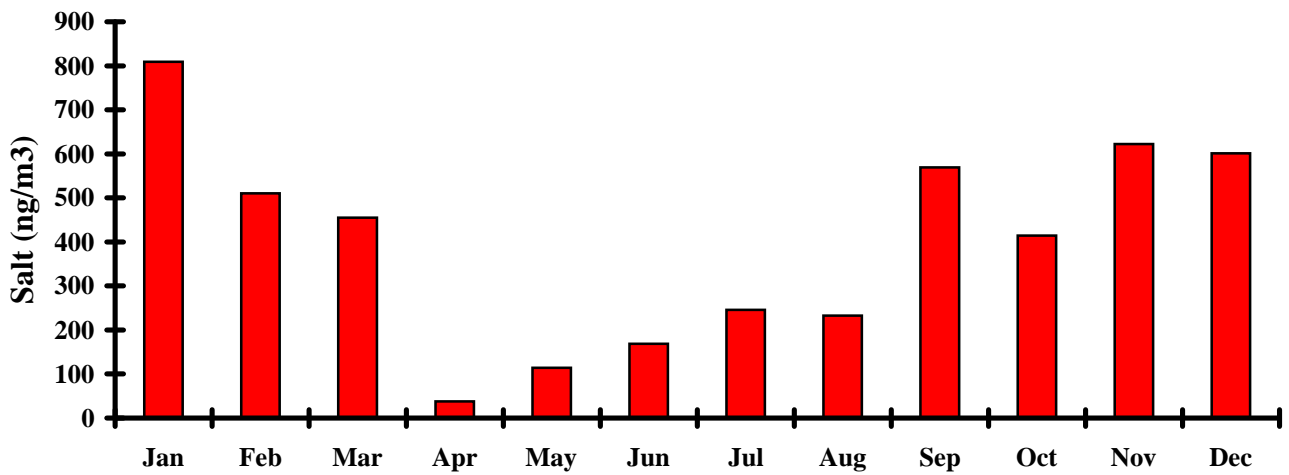
Soil vs Month



Elemental Carbon vs Month

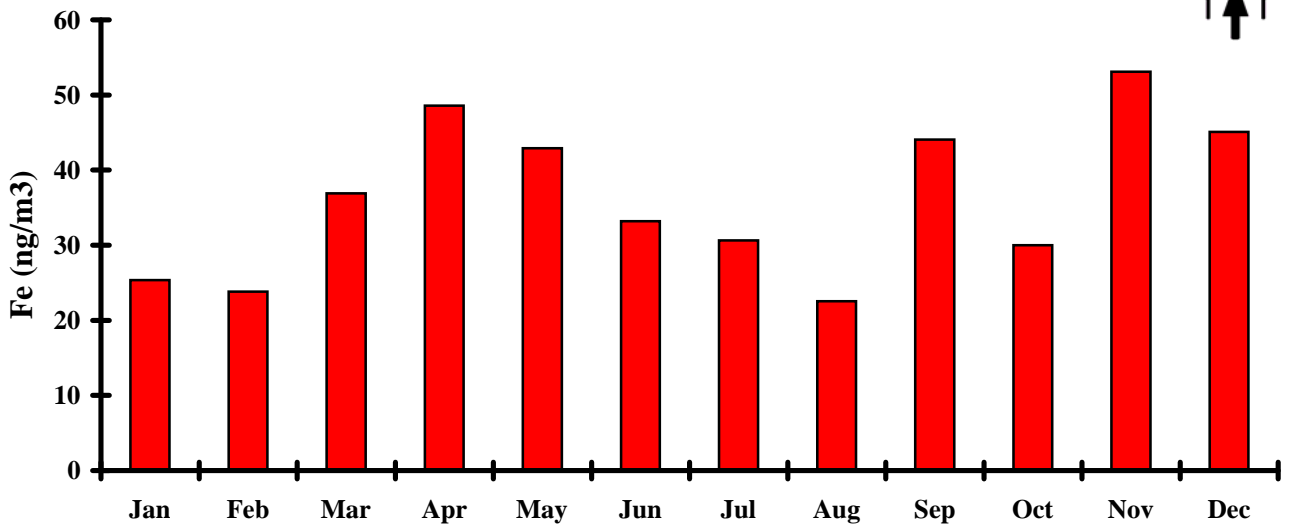


Salt vs Month

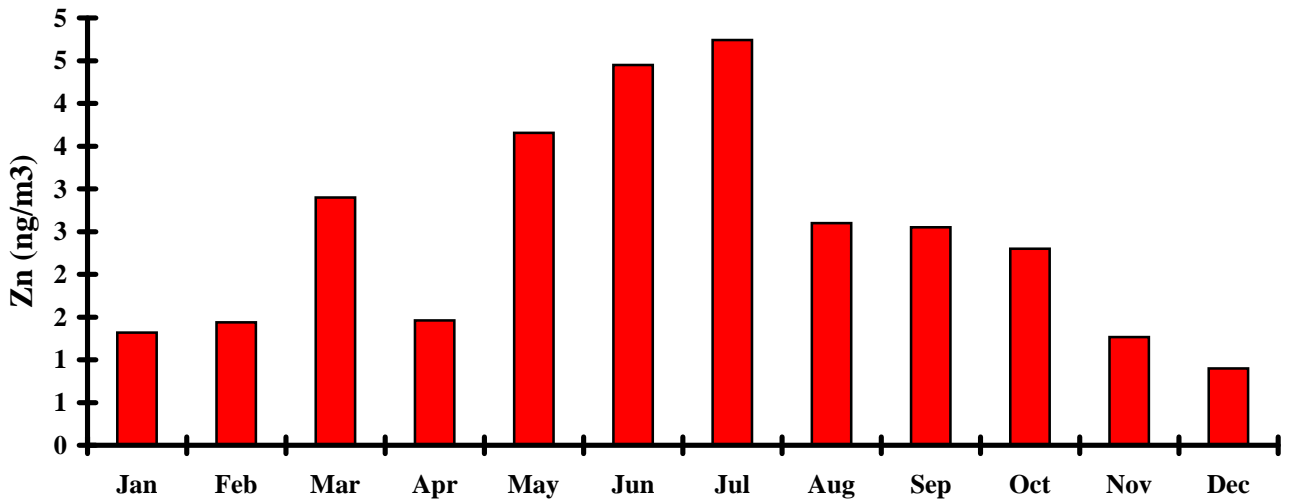




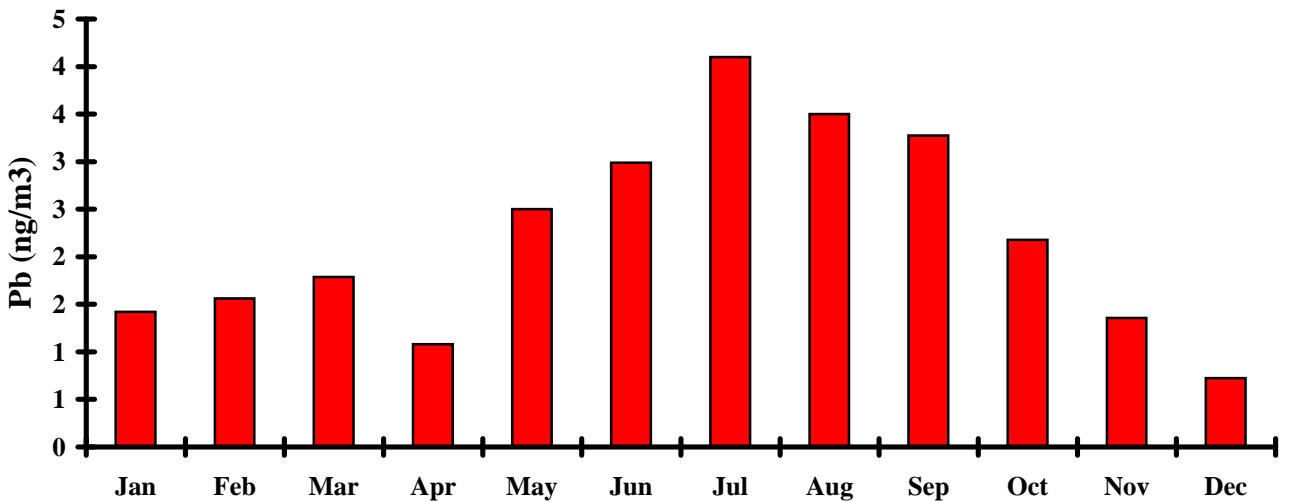
Iron vs Month

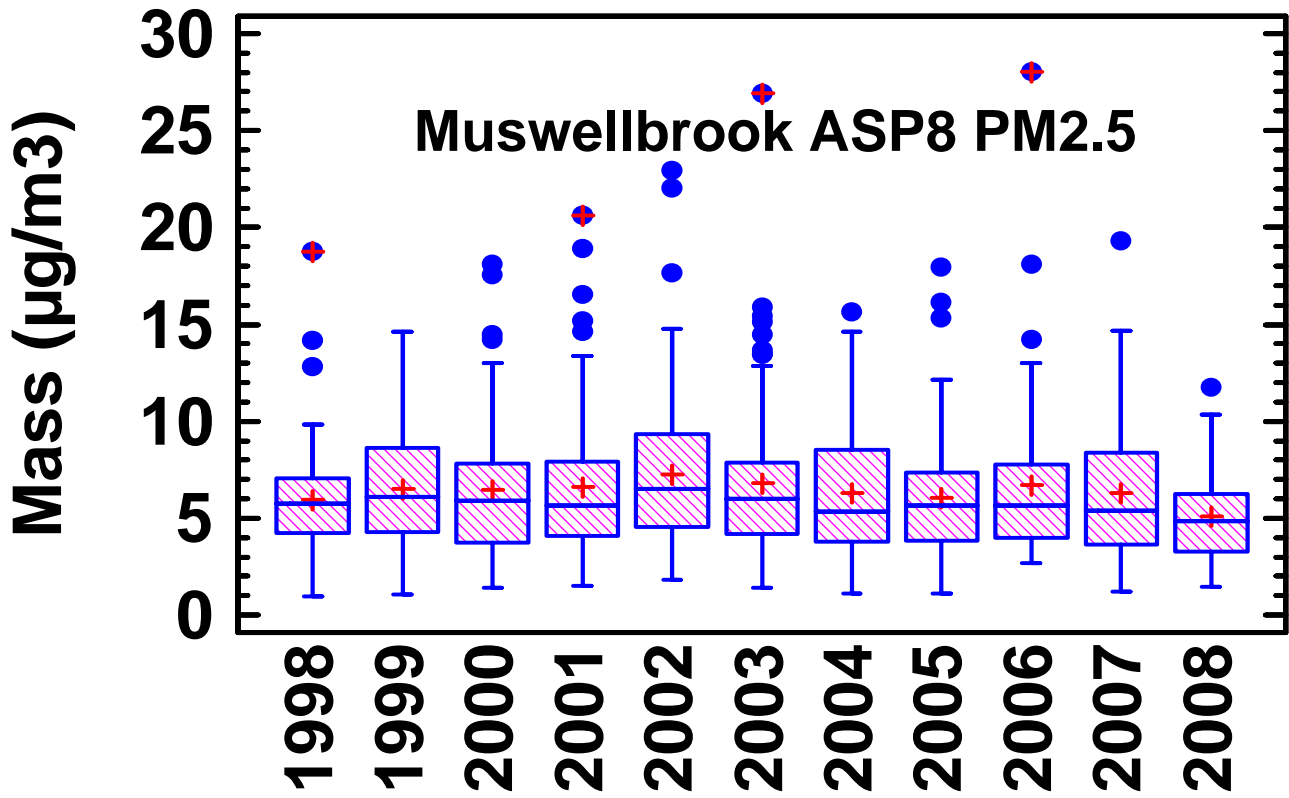


Zinc vs Month



Lead vs Month





Box and whisker plot of the 24 hour PM2.5 Mass for each year from 1998 to 2008

The (+) are the annual averages

The horizontal bars are the annual median value

The boxes contain 25% to 75% of the data for that year

The whiskers on each box represent the size of the distribution for that year

The dots are extreme and outlier events for that year