

## MONTHLY SUMMARY SHEET



Summary Sheet For Sites :- Muswellbrook ASP40

Absolute Values (ng/m3)

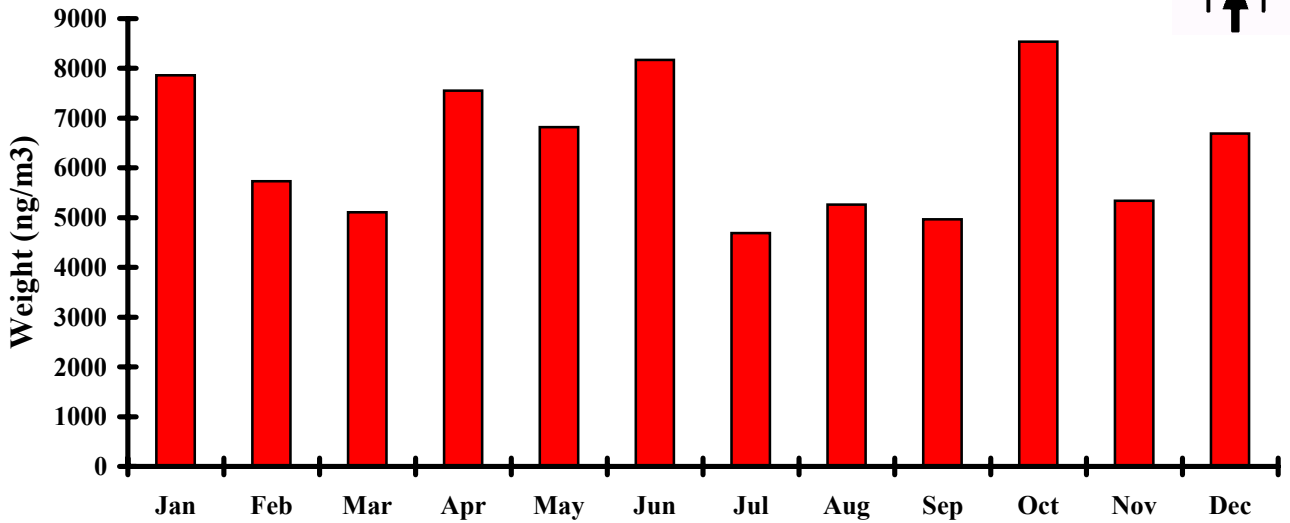
2007	Weight	NHSO4	Organ.	Soil	Elt. C.	Salt	K	Fe	Zn	Pb
Jan	7858	2535	403	677	797	1363	45	42	2	2
Feb	5734	2341	328	533	644	838	33	34	2	1
Mar	5106	1946	264	525	638	845	28	33	2	2
Apr	7555	2761	1208	634	750	736	43	46	4	2
May	6817	1864	1640	891	1038	328	45	69	6	3
Jun	8169	1365	3086	446	1130	246	46	50	8	12
Jul	4690	652	1392	231	736	311	31	27	3	3
Aug	5261	1296	1324	361	753	318	39	32	6	2
Sep	4969	1308	669	464	653	705	38	33	3	3
Oct	8534	2843	428	825	686	1227	56	88	2	3
Nov	5336	2304	544	403	651	312	23	28	1	1
Dec	6688	2969	603	341	673	685	28	28	2	2
Average	6393	2015	991	528	762	659	38	43	3	3
Stan Dev	1379	735	810	198	160	373	10	19	2	3
Minimum	1221	182	0	40	63	0	5	2	0	0
Site : Date	40:18/7	40:5/8	40:14/1	40:5/8	40:5/8	40:24/1	40:5/8	40:1/7	40:18/3	40:10/1
Maximum	19334	6275	6562	2622	1817	3217	131	346	25	40
Site : Date	40:22/4	40:24/10	40:22/4	40:6/5	40:2/5	40:17/10	40:31/10	40:28/10	40:8/8	40:24/6

Relative Percentages (%)

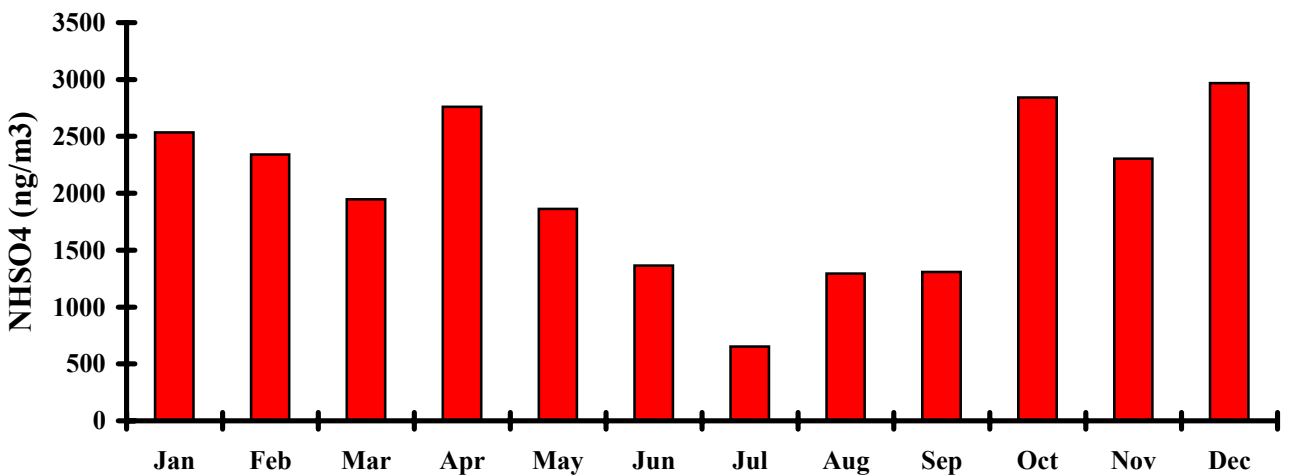
2007		NHSO4 %	Organ. %	Soil %	Elt. C. %	Salt %	RCMA %	
Jan		32	5	9	10	17	75	
Feb		41	6	9	11	15	82	
Mar		38	5	10	13	17	81	
Apr		37	16	8	10	10	81	
May		27	24	13	15	5	84	
Jun		17	38	5	14	3	79	
Jul		14	30	5	16	7	70	
Aug		25	25	7	14	6	75	
Sep		26	13	9	13	14	77	
Oct		33	5	10	8	14	72	
Nov		43	10	8	12	6	77	
Dec		44	9	5	10	10	78	
Average		31	16	8	12	10	78	
Stan Dev		10	11	2	2	5	4	
Minimum		3	0	1	1	0		
Site : Date		40:5/8	40:14/1	40:5/8	40:5/8	40:24/1		
Maximum		98	103	41	28	50		
Site : Date		40:24/10	40:22/4	40:6/5	40:2/5	40:17/10		



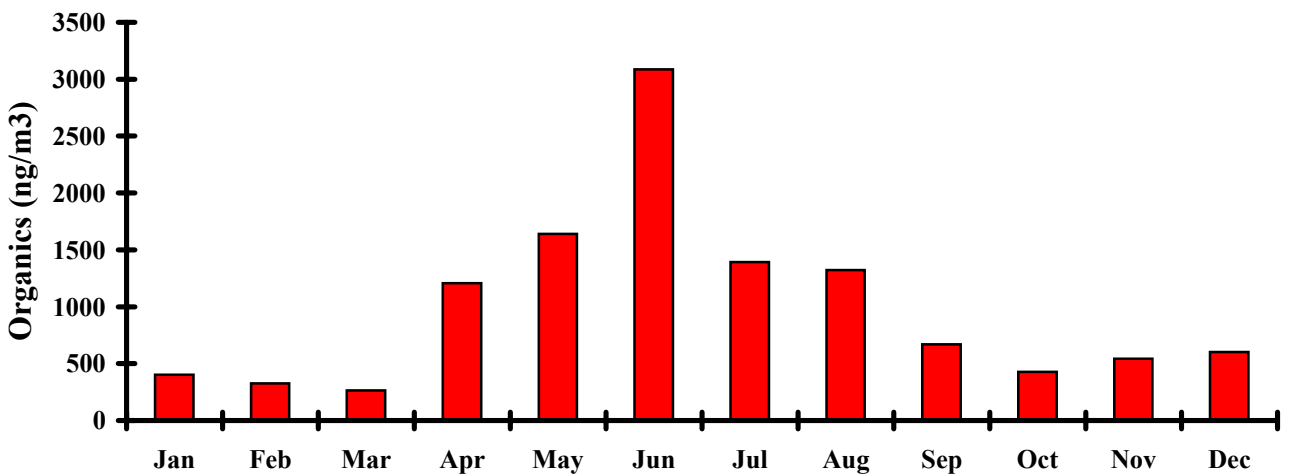
### Weight vs Month



### Ammonium Sulphate vs Month

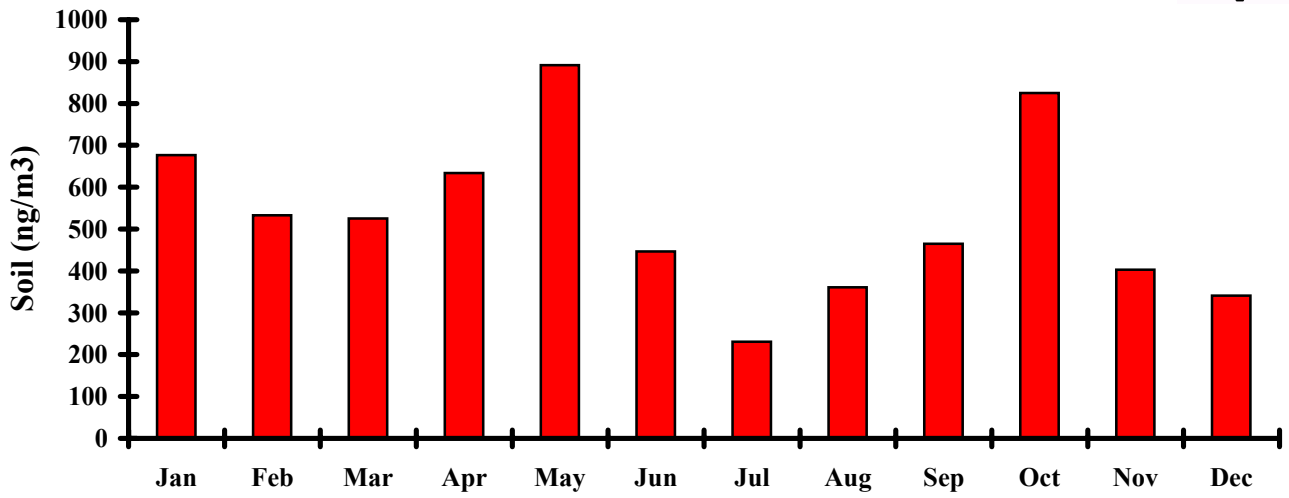


### Organics vs Month

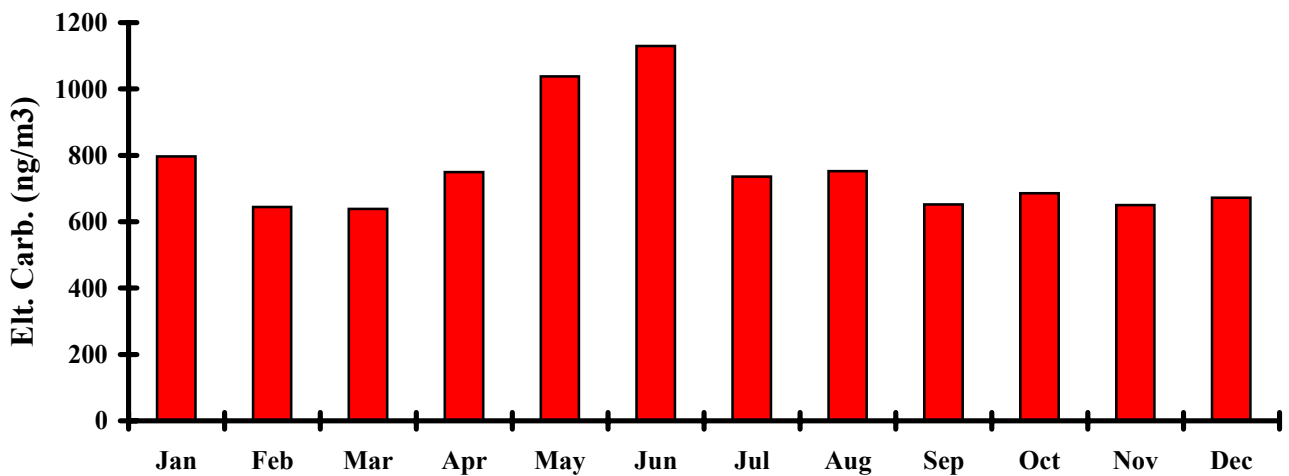




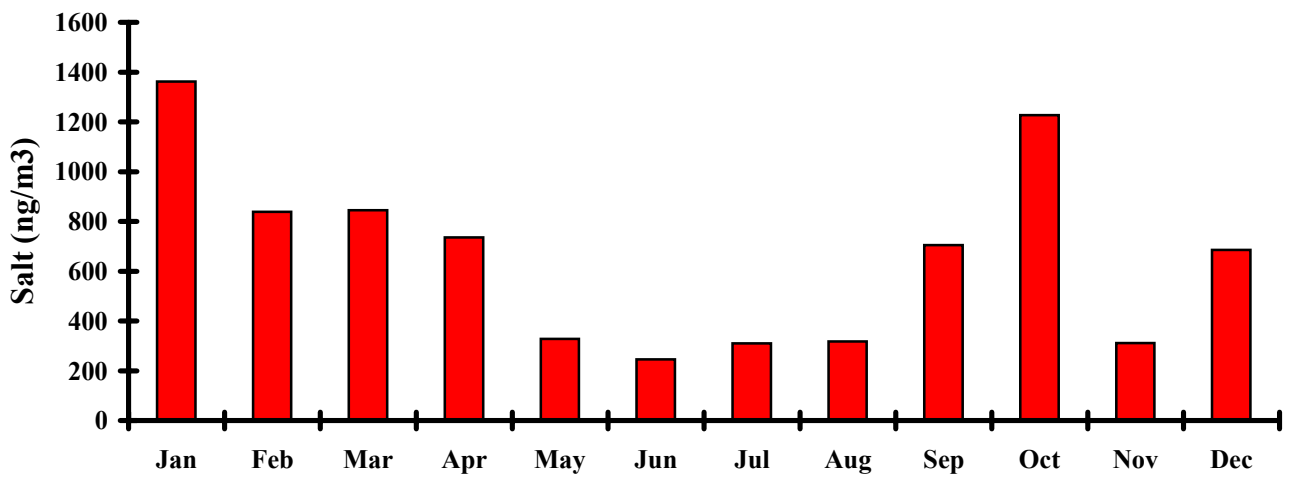
### Soil vs Month



### Elemental Carbon vs Month

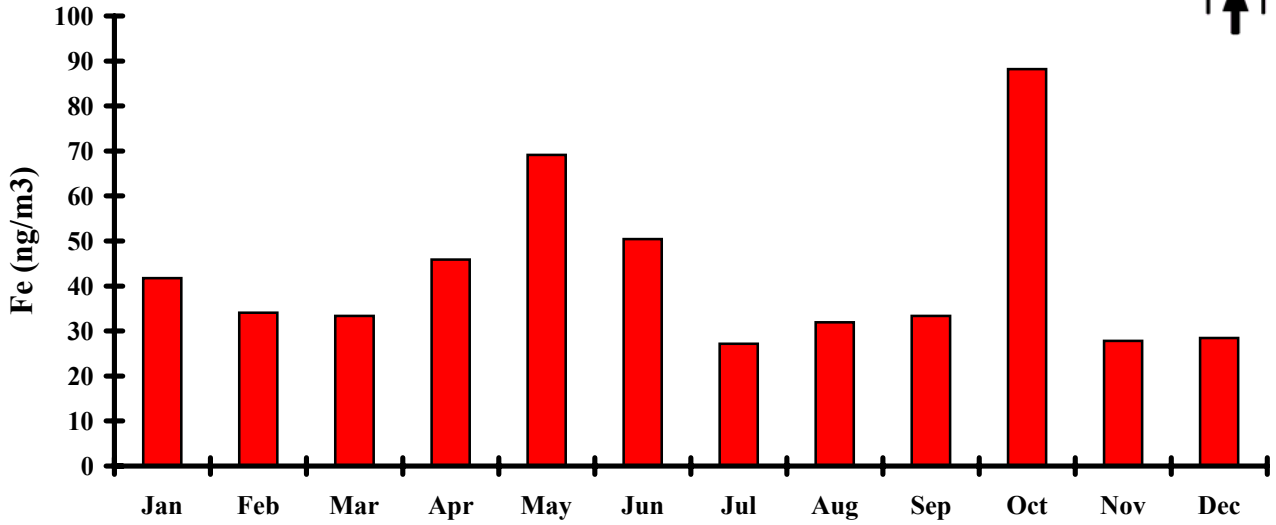


### Salt vs Month

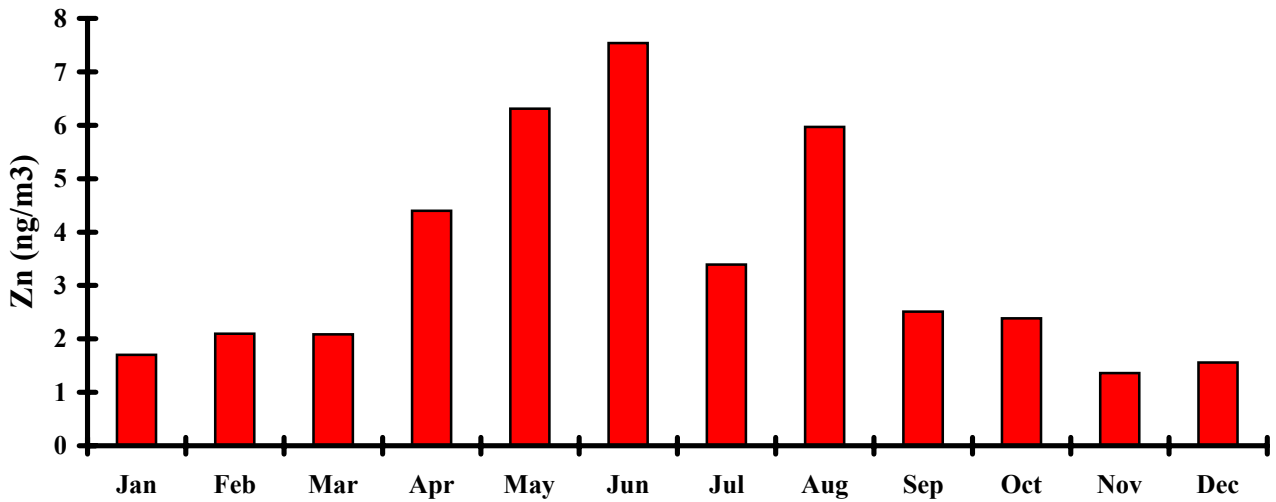




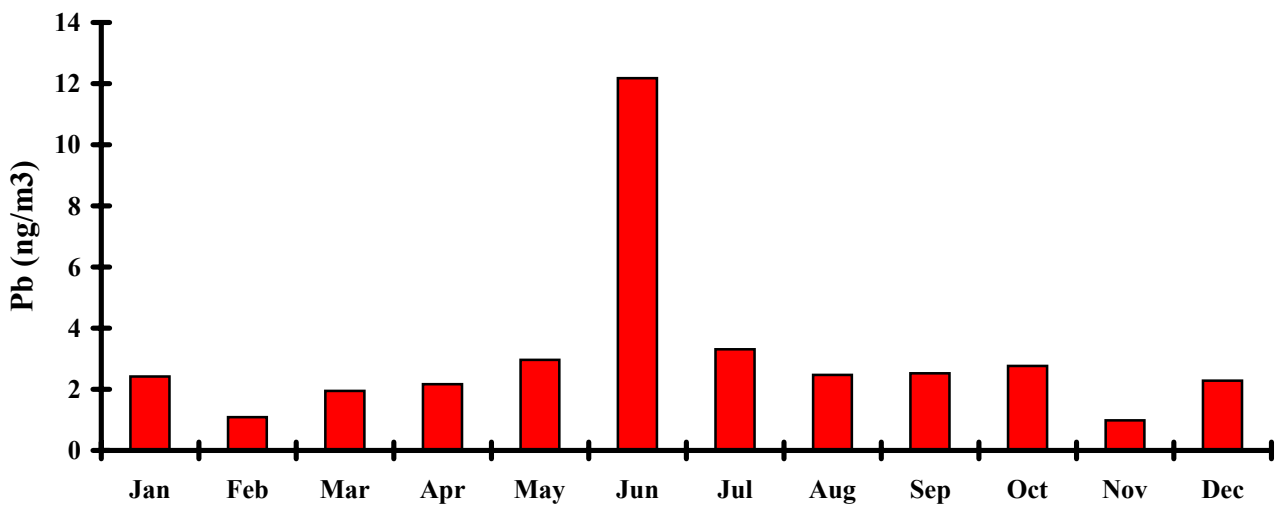
### Iron vs Month

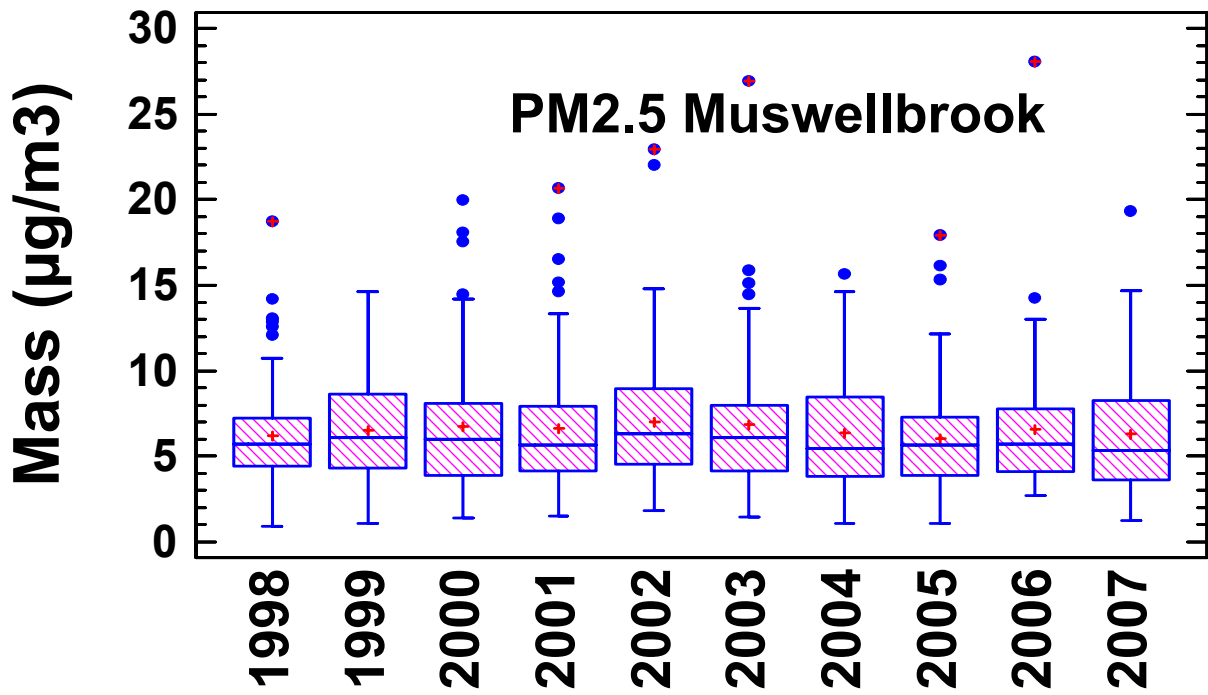


### Zinc vs Month



### Lead vs Month





Box and whisker plot of the 24 hour PM2.5 Mass for each year from 1998 to 2007  
 The (+) are the annual averages  
 The horizontal bars are the annual median value  
 The boxes contain 25% to 75% of the data for that year  
 The whiskers on each box represent the size of the distribution for that year  
 The dots are extreme and outlier events for that year